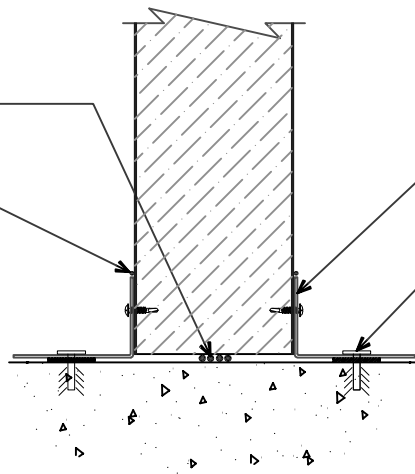


SET PANELS
IN BUTYL SEALANT

SILICONE SEALANT
(AFTER TEMP. PULLDOWN)
(OPTIONAL -- NOT BY AWIP)



"BA-01" BASE ANGLE
W/ #10 X 3/4" PHILIP PAN
HEAD FASTENERS 12" O/C

CONCRETE ANCHORS
(NOT BY AWIP)

FINISH FLOOR PARTITION BASE

(SECTION VIEW)

A ALL WEATHER
INSULATED PANELS

929 ALDRIDGE ROAD, VACAVILLE, CA 95688
PHONE: (707) 359-2280 FAX: (707) 359-2286

DETAIL: FINISH FLOOR PARTITION BASE

APPLICATION: COOLER / FREEZER STORAGE

DATE: 03/14/07

JOB NO: XXXXXXXX

DRAWN: CLR

SHEET: 1 OF 1