

(2) 3/8"Ø NUTS & WASHERS

SECONDARY FRAMING
(NOT BY AWIP)

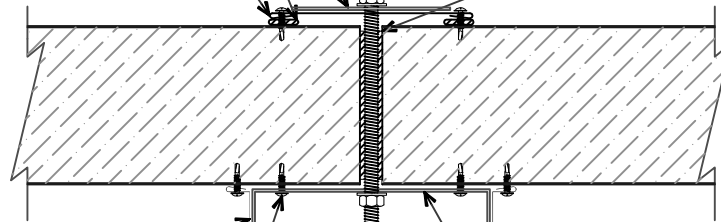
"PW-01" PLATE WASHER
4" X 4" X 14 GA. PLATE

3/8"Ø ALL THREAD ROD
(MAX. SPACING 5'-0" O/C)

1/2" X 3/32" BUTYL TAPE

FILL 1/2" GAP W/ INSTA-SEAL
FOAM SEALANT

"TF- " TRANS. FLASHING
W/ #10 X 3/4" PHILLIP PAN
HEAD FASTENERS 12" O/C



"CT- " CAP TRIM W/
W/ #10 X 3/4" PHILIP PAN
HEAD FASTENERS 12" O/C

"CC-01" CEILING CHANNEL

#10 X 3/4" PHILIP PAN
HEAD FASTENER 15" O/C

SUSPENDED CEILING W/ CEILING CHANNEL

(SECTION VIEW)

A ALL WEATHER
INSULATED PANELS

929 ALDRIDGE ROAD, VACAVILLE, CA 95688
PHONE: (707) 359-2280 FAX: (707) 359-2286

DETAIL: SUSPENDED CEILING W/ CHANNEL

APPLICATION: COOLER / FREEZER STORAGE

DATE: 03/14/07

JOB NO: XXXXXXXX

DRAWN: CLR

SHEET: 1 OF 1