

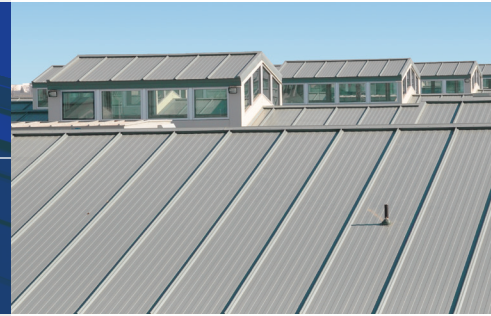


**ALL WEATHER
INSULATED PANELS**

INNOVATIVE.
ADAPTABLE.
ENERGY EFFICIENT.

SR2

Product Data Sheet
Standing Seam Roof Panel



The look of traditional standing seam integrated with the benefits of an insulated metal panel - a great alternative to field assembled roofing components.

FEATURES AND BENEFITS

- Field seamed, hidden fastener joinery provides maximum protection against the elements.
- The trapezoidal rib design provides added strength against potential foot traffic damage compared to other standing seam roof products.
- The standard exterior metal surface is smooth 26ga G-90 galvanized steel with standard PVDF and SMP exterior coatings (other coatings may be available).
- The standard interior metal surface is embossed 26ga Imperial White.
- The panel arrives on site in one piece and requires a simple one-step installation reducing construction time and costs.

PRODUCT PARAMETERS

Panel Thickness:			
3.25"	4"	5"	6"
Insulating Values (R):**			
26	32	41	49

Panel Width: 40"

Panel Length: 8' min to 50' maximum based on a 48' flatbed trailer length. Consult your sales representative for other available lengths.

Insulation Material: CFC-free foamed-in-place polyisocyanurate foam 2.1 to 2.5 pcf density.

Joint Configuration: 90° field seamed.

Metal facings: 26ga galvanized steel (22ga, 24ga available).

Coatings: PVDF & SMP (other coatings available).

Accessories: fasteners, standing seam clip assemblies, sealants, brake formed flashings.

TESTED & APPROVED

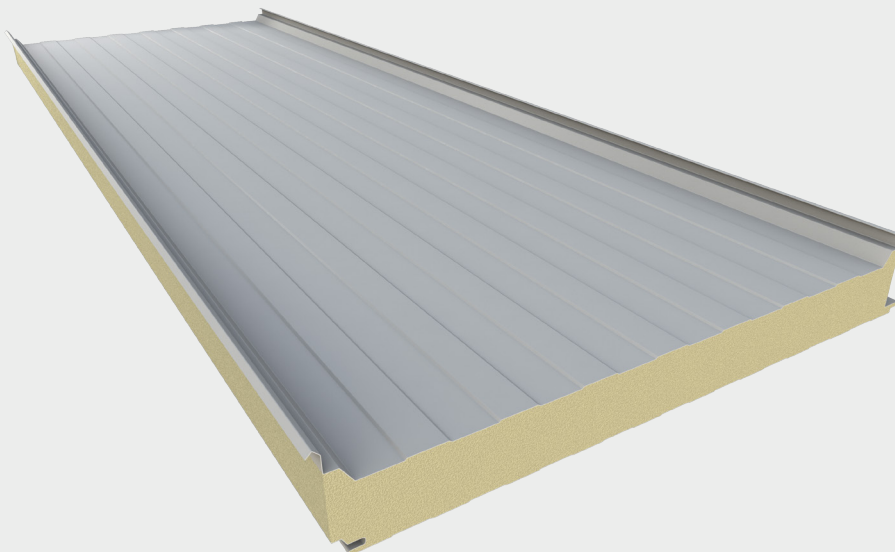
All Weather Insulated Panels' products have been extensively tested under a variety of North American standards:

- FM 4880:** Class 1 Fire Rating
- FM 4471:** Class 1 Roof Assembly
- CAN/ULC S102:** Flame Spread
- CAN/ULC S126:** Flame Spread (Roof)
- CAN/ULC S127:** Flammability
- ASTM C518/C1363:** Thermal Transmission
- ASTM E1646:** Water Penetration
- ASTM E1680:** Air Infiltration
- ASTM E72:** Structural Strength

FLORIDA APPROVED



***R-Value tested in accordance with ASTM C518/C1363 at 40°F mean temperature, adjusted for a windspeed of 15 mph.*



U.S.A

929 Aldridge Rd. Vacaville, CA 95688
15000 Panatella Pkwy Little Rock, AR 72206
1-888-970-AWIP (2947)
awipanel.com