

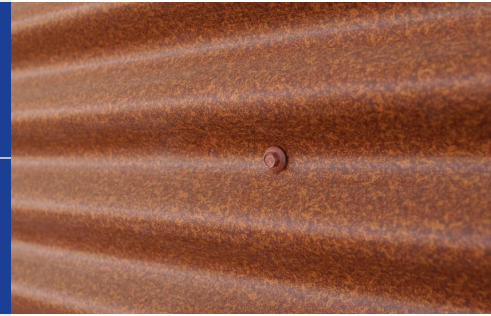


**ALL WEATHER
INSULATED PANELS**

INNOVATIVE.
ADAPTABLE.
ENERGY EFFICIENT.

CW36

Product Data Sheet Corrugated Wall & Roof Panels



FEATURES AND BENEFITS

- 7/8" Corrugated panel provides a sleek linear look for exterior commercial industrial buildings; available for both wall and roof applications
- Specifically designed for use on exterior commercial retail, winery & mixed use projects. Wall panels may be installed vertically or horizontally.
- Minimum roof slope required is 5:12
- The panel's overlapping joint is self-aligning & allows for easy sealant application at the panel joinery.
- The standard exterior metal surface is embossed 26ga G-90 galvanized steel with PVDF and SMP fully warranted exterior coatings.
- The standard interior metal surface is smooth 26ga Imperial White.
- The panel arrives on site in one piece and requires a simple one step installation reducing construction time and costs.

PRODUCT PARAMETERS

Panel Thickness:			
	2.5"	4"	
Insulating Values (R):**			
	23	35	

Panel Width: 36"

Panel Length: 8' min to 50' maximum based on a 48' flatbed trailer length. Consult your sales representative for other available lengths.

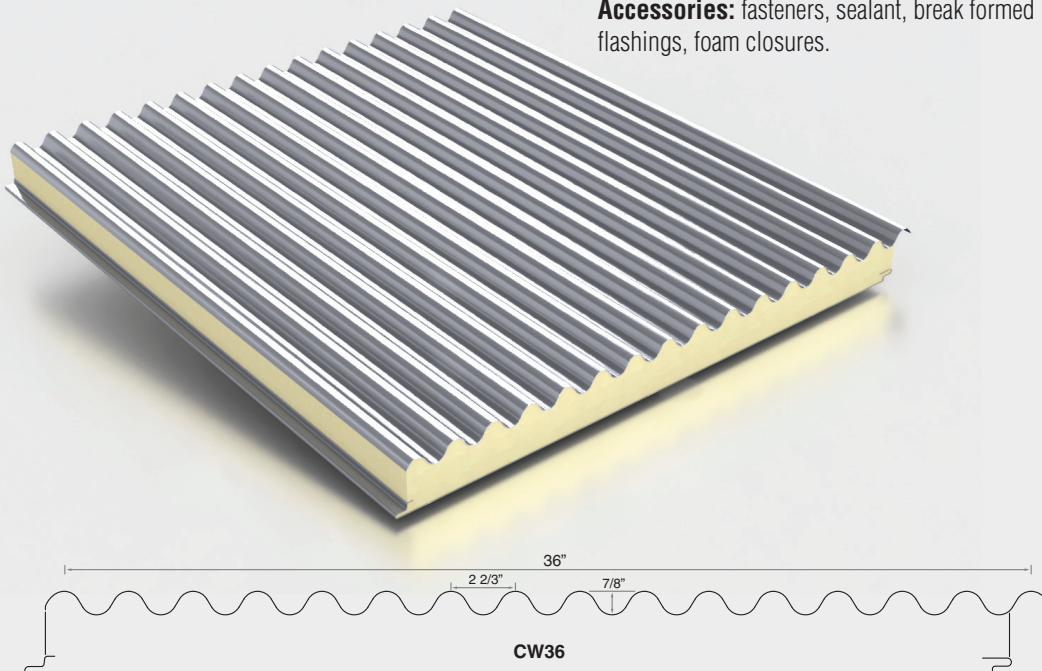
Insulation Material: CFC-free foamed-in-place polyisocyanurate foam 2.1 to 2.5 pcf density.

Joint Configuration: overlapping with exposed fasteners.

Metal facings: 26ga galvanized steel (24ga available). 26ga galvanized finish available for natural metal appearance.

Coatings: PVDF & SMP (other coatings available).

Accessories: fasteners, sealant, break formed flashings, foam closures.



TESTED & APPROVED

All Weather Insulated Panels' products have been extensively tested under a variety of North American standards:

- ASTM C518/C1363:** Thermal Transmission
- ASTM E283:** Air Infiltration
- ASTM E331:** Water Penetration
- ASTM E72:** Structural Strength
- ASTM E84:** Flame Spread
- AAMA 501.1:** Air/Water Infiltration

***R-Value tested in accordance with ASTM C518/C1363 at 40°F mean temperature, adjusted for a windspeed of 15 mph.*

U.S.A.

929 Aldridge Rd. Vacaville, CA 95688
15000 Panatella Pkwy Little Rock, AR 72206
1-888-970-AWIP (2947)
awippanels.com

