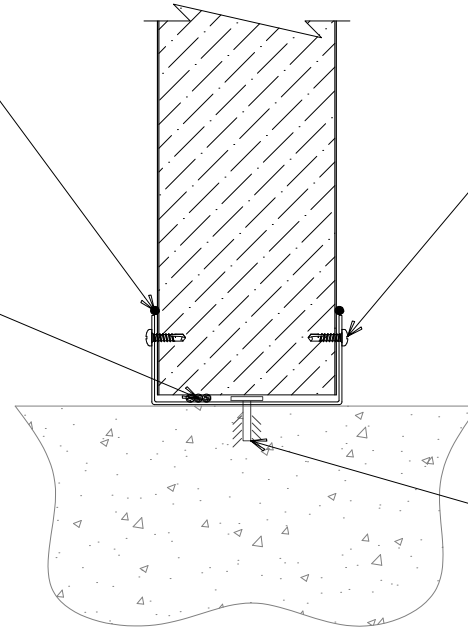


SILICONE SEALANT AFTER
TEMPERATURE PULL-DOWN
(OPTIONAL; NOT BY IMP SUPPLIER)

BUTYL SEALANT
(MARRY TO VERTICAL SEALANT)

NOTE: REFER TO PANEL JOINT
DETAIL(S) FOR VERTICAL
SEALANT LOCATION(S).



"BC-01" U-CHANNEL W/ 10.
x 0.75" PPH DP3 12" O/C

CONCRETE ANCHORS
(NOT BY IMP SUPPLIER)

PARTITION BASE CONDITION - FLUSH

(SECTION VIEW)

DETAIL:

BASE CONDITION - FLUSH

APPLICATION:

PARTITION WALL, AMBIENT

AWIP DETAIL NUMBER:

APC-AA1-BC-001

DATE:

10/03/23

SHEET:

DRAWN BY:

MMF

1

OF

1

929 ALDRIDGE ROAD
VACAVILLE, CA 95688
TEL: (707) 359-2280
FAX: (707) 359-2286
WWW.AWIPANELS.COM

All Weather
Insulated Panels

