

"BC-02" 20 GA CHANNEL CAP W/
 #14 - 13 x 1½" TRUSS HEAD TEK
 FASTENERS 12" O/C. W/ BUTYL
 SEALANT AT FLANGES (MARRY TO
 VERTICAL SEALANT)

NOTE: BUTYL SEALANT AT WALL
 JOINERY NOT SHOWN FOR CLARITY.
 ENSURE ALL SEALANTS MARRY TO
 CREATE A THERMAL ENVELOPE.

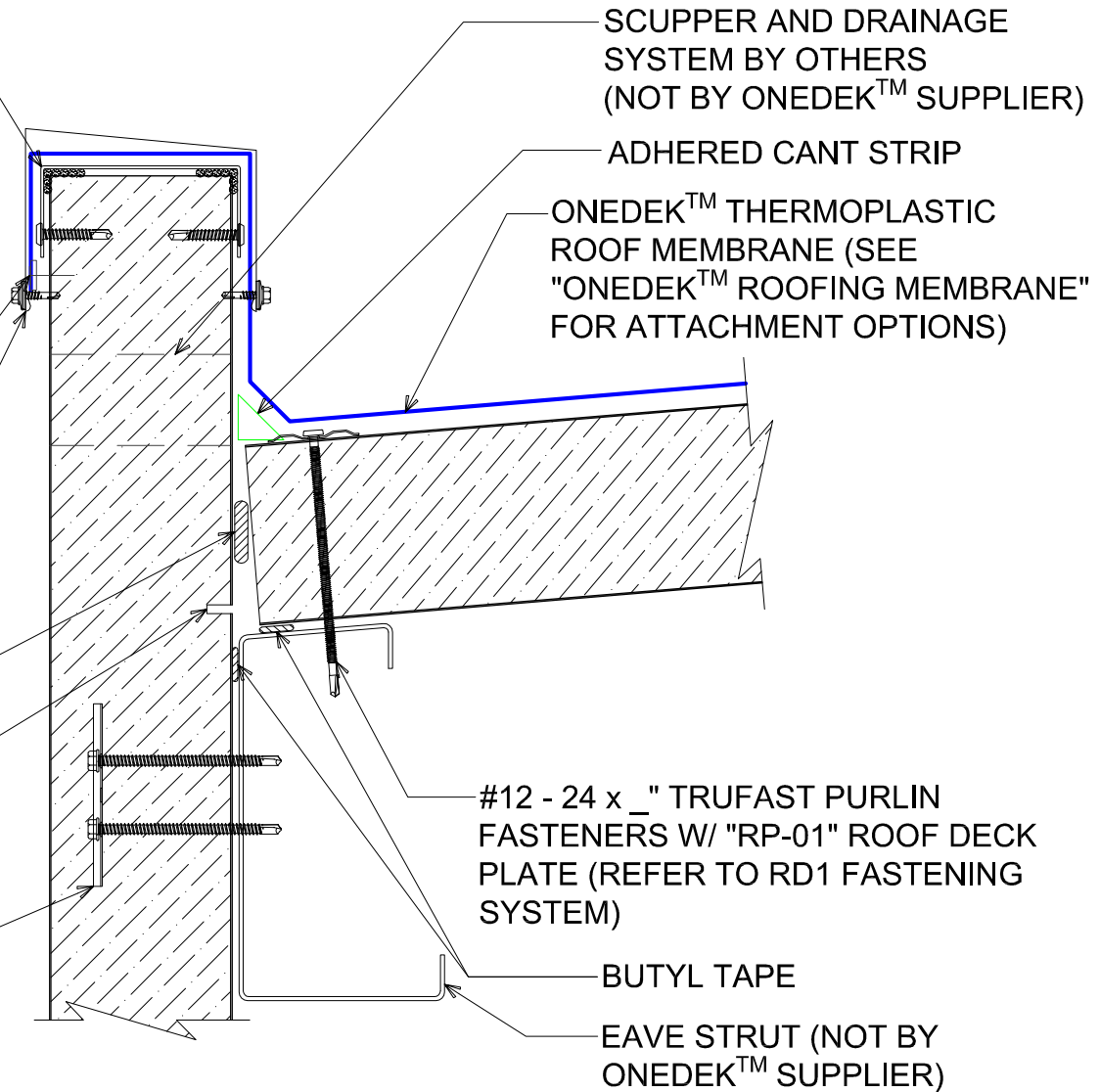
CONTINUOUS RETAINER FOR
 SINGLE PLY MEMBRANE W/
 FASTENERS 12" O/C MAX.
 (NOT BY ONEDEK™ SUPPLIER)

"PT-X1" PARAPET CAP TRIM
 W/ ¼ - 14 x 7/8" STITCH TEKS 12" O/C

FILL VOID WITH ONE-PART
 EXPANDING FOAM SEALANT

CONTINUOUS THERMAL
 CUT FOR COLD STORAGE
 APPLICATIONS

"WC-01" PANEL CLIP W/
 () ¼ - 14 x _ TEK 3 FASTENERS
 W/O WASHER AT PANEL JOINT



BASE FLASHING AT PARAPET W/ METAL COPING (EAVE)

(SECTION VIEW)

DETAIL: PARAPET W/ METAL COPING (EAVE)

929 ALDRIDGE ROAD
 VACAVILLE, CA 95688
 TEL: (707) 359-2280
 FAX: (707) 359-2286
 WWW.AWIPANELS.COM

ALL WEATHER
 INSULATED PANELS

APPLICATION:
 RD1 ROOF DECK, COMMERCIAL & INDUSTRIAL, COLD-STORAGE
 AWIP DETAIL NUMBER:
 RDR-CJCS-EW-001

DATE: 06/18/19
 DRAWN BY: MMF

SHEET: 1 OF 1