

NOTE: REFER TO DETAIL _E FOR
EDGE METAL ASSEMBLY
INFORMATION.

"BC-02" 20 GA CHANNEL CAP W/
#14 - 13 x 1½" TRUSS HEAD TEK
FASTENERS 12" O/C. W/ BUTYL
SEALANT AT FLANGES (MARRY
TO VERTICAL SEALANT)

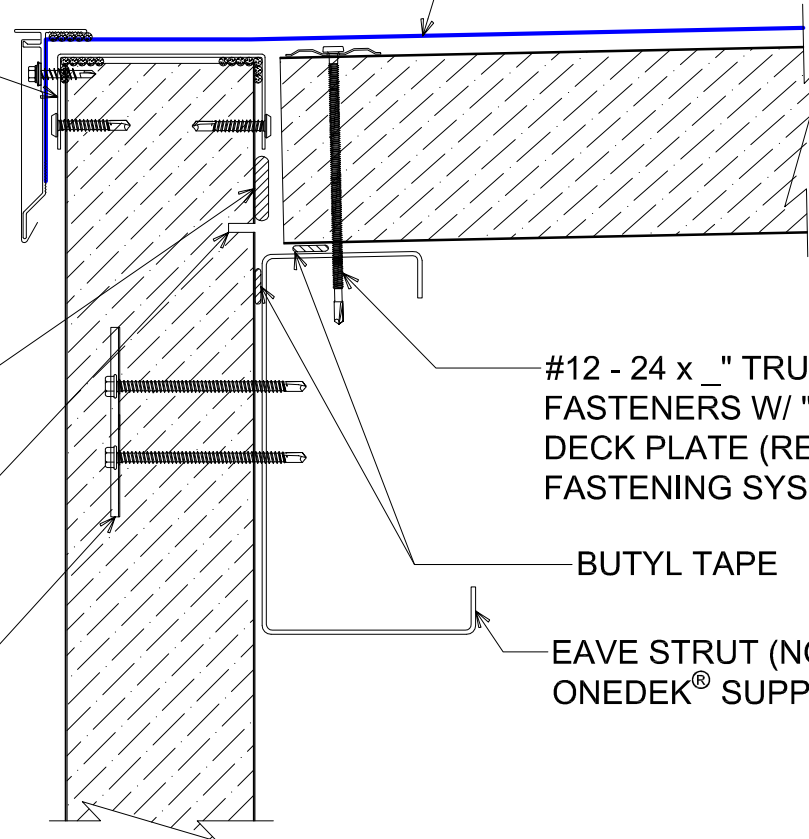
NOTE: BUTYL SEALANT AT WALL
JOINERY NOT SHOWN FOR CLARITY.
ENSURE ALL SEALANTS MARRY TO
CREATE A THERMAL ENVELOPE.

FILL VOID WITH ONE-PART
EXPANDING FOAM SEALANT

CONTINUOUS THERMAL CUT FOR
COLD STORAGE APPLICATIONS

"WC-01" PANEL CLIP W/
() ¼ - 14 x _ TEK 3 FASTENERS
W/O WASHER AT PANEL JOINT

ONEDEK® THERMOPLASTIC
ROOF MEMBRANE
(SEE "ONEDEK® ROOFING
MEMBRANE" FOR
ATTACHMENT OPTIONS)



#12 - 24 x _ TRUFAST PURLIN
FASTENERS W/ "RP-01" ROOF
DECK PLATE (REFER TO RD1
FASTENING SYSTEM)

BUTYL TAPE

EAVE STRUT (NOT BY
ONEDEK® SUPPLIER)

DRAINING PERIMETER EDGE METAL (GUTTERLESS EAVE)

(SECTION VIEW)

DETAIL:	DRAINING PERIMETER EDGE METAL (GUTTERLESS EAVE)		
APPLICATION:	RD1 ROOF DECK, COMMERCIAL & INDUSTRIAL, COLD-STORAGE	DATE:	08/09/22
AWIP DETAIL NUMBER:	RDR-CJCS-GE-001	SHEET:	1 OF 1
		DRAWN BY:	MMF

929 ALDRIDGE ROAD
VACAVILLE, CA 95688
TEL: (707) 359-2280
FAX: (707) 359-2286
WWW.AWIPANELS.COM



ANCHOR BAR EXTRUDED

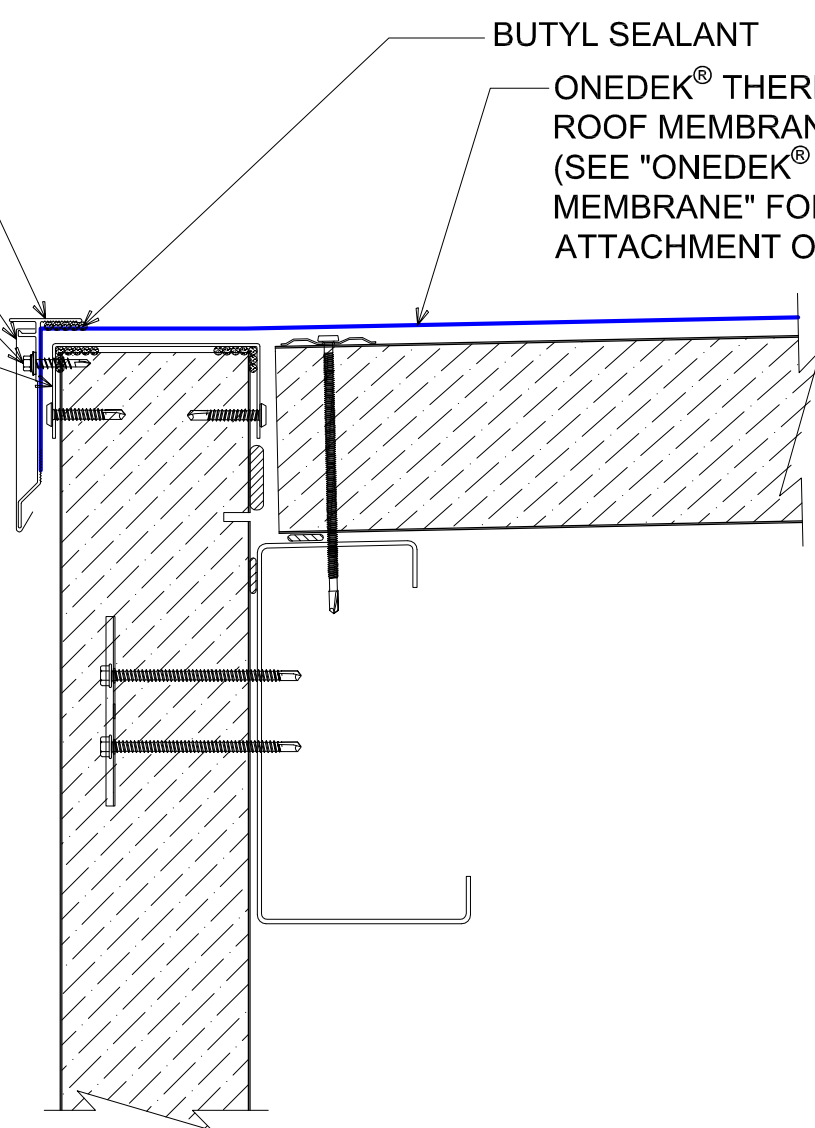
AFDE-45 DRIP EDGE COVER (12'-0" LENGTHS)

#12-14 x 1 1/4" HWH/BD TEK 2 STAINLESS STEEL FASTENERS 12" O/C

"BC-02" 20 GA CHANNEL CAP W/ #14 - 13 x 1 1/2" TRUSS HEAD TEK FASTENERS 12" O/C. W/ BUTYL SEALANT AT FLANGES (MARRY TO VERTICAL SEALANT)

BUTYL SEALANT

ONEDEK® THERMOPLASTIC ROOF MEMBRANE (SEE "ONEDEK® ROOFING MEMBRANE" FOR ATTACHMENT OPTIONS)



#E DRAINING PERIMETER EDGE METAL (GUTTERLESS EAVE)

(SECTION VIEW)

DETAIL:

DRAINING PERIMETER EDGE (GUTTERLESS EAVE), AFDE-45

DATE:	08/09/22	SHEET:	1
APPLICATION:	RD1 ROOF DECK, COMMERCIAL & INDUSTRIAL, COLD-STORAGE	DRAWN BY:	MMF
AW/P DETAIL NUMBER:	RDR-CICS-GE-001		OF 1

929 ALDRIDGE ROAD
VACAVILLE, CA 95688
TEL: (707) 359-2280
FAX: (707) 359-2286
WWW.AWIPANELS.COM



ANCHOR BAR EXTRUDED

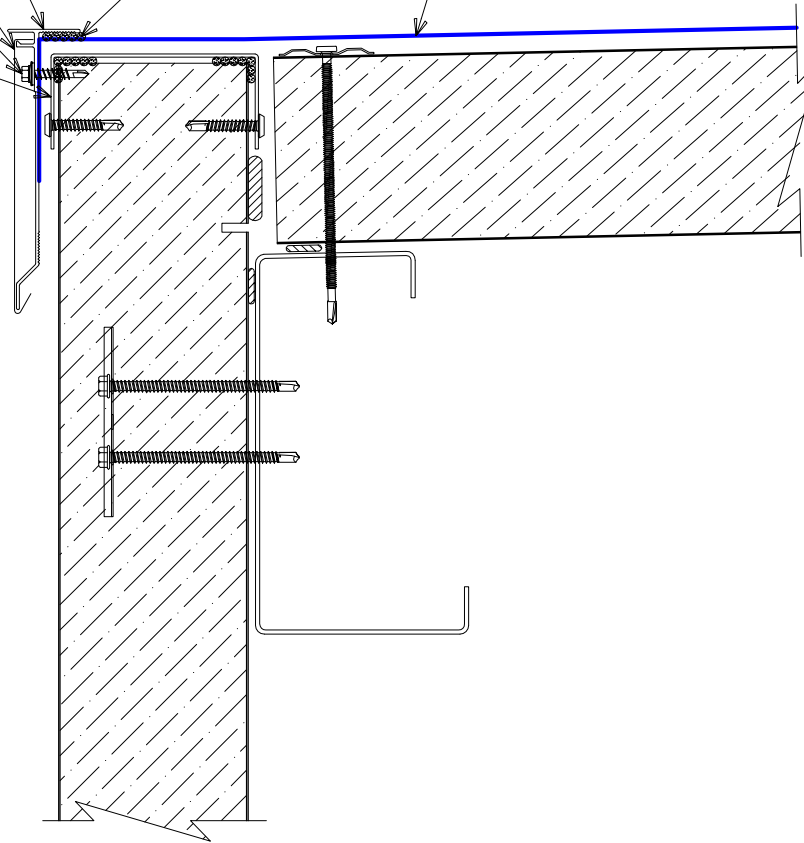
AFDE-60 DRIP EDGE COVER (12'-0" LENGTHS)

#12-14 x 1 1/4" HWH/BD TEK 2 STAINLESS STEEL FASTENERS 12" O/C

"BC-02" 20 GA CHANNEL CAP W/ #14 - 13 x 1 1/2" TRUSS HEAD TEK FASTENERS 12" O/C. W/ BUTYL SEALANT AT FLANGES (MARRY TO VERTICAL SEALANT)

BUTYL SEALANT

ONEDEK® THERMOPLASTIC ROOF MEMBRANE (SEE "ONEDEK® ROOFING MEMBRANE" FOR ATTACHMENT OPTIONS)



#E DRAINING PERIMETER EDGE METAL (GUTTERLESS EAVE)

(SECTION VIEW)

DETAIL:

DRAINING PERIMETER EDGE (GUTTERLESS EAVE), AFDE-60

DATE:	08/09/22	SHEET:	1	OF	1
APPLICATION:	RD1 ROOF DECK, COMMERCIAL & INDUSTRIAL, COLD-STORAGE	DRAWN BY:	MMF		
AWIP DETAIL NUMBER:	RDR-CICS-GE-001				

929 ALDRIDGE ROAD
VACAVILLE, CA 95688
TEL: (707) 359-2280
FAX: (707) 359-2286
WWW.AWIPANELS.COM



ANCHOR BAR EXTRUDED

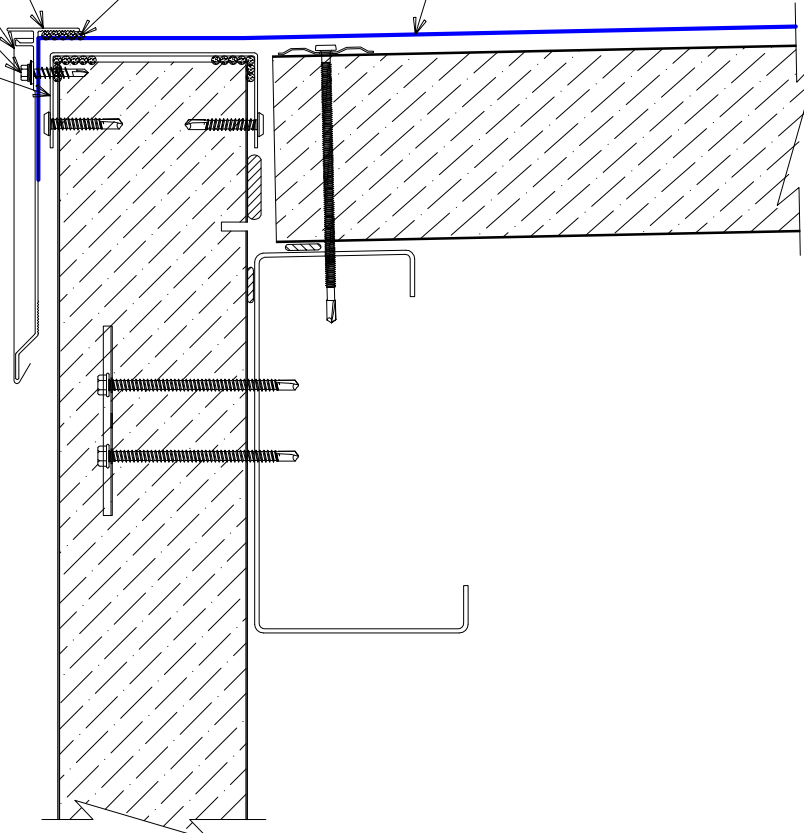
AFDE-75 DRIP EDGE COVER (12'-0" LENGTHS)

#12-14 x 1 1/4" HWH/BD TEK 2 STAINLESS STEEL FASTENERS 12" O/C

"BC-02" 20 GA CHANNEL CAP W/ #14 - 13 x 1 1/2" TRUSS HEAD TEK FASTENERS 12" O/C. W/ BUTYL SEALANT AT FLANGES (MARRY TO VERTICAL SEALANT)

BUTYL SEALANT

ONEDEK® THERMOPLASTIC ROOF MEMBRANE (SEE "ONEDEK® ROOFING MEMBRANE" FOR ATTACHMENT OPTIONS)



#E DRAINING PERIMETER EDGE METAL (GUTTERLESS EAVE)

(SECTION VIEW)

DETAIL:

DRAINING PERIMETER EDGE (GUTTERLESS EAVE), AFDE-75

DATE:	08/09/22	SHEET:	1
APPLICATION:	RD1 ROOF DECK, COMMERCIAL & INDUSTRIAL, COLD-STORAGE	DRAWN BY:	MMF
AWIP DETAIL NUMBER:	RDR-CICS-GE-001		OF 1

929 ALDRIDGE ROAD
VACAVILLE, CA 95688
TEL: (707) 359-2280
FAX: (707) 359-2286
WWW.AWIPANELS.COM

