

SELF-ADHERING MEMBRANE FLASHING

"RF-03" ROOF FASCIA W/
#14 - 13 x 1 1/2" TRUSS HEAD
TEK FASTENERS 12" O/C

"BC-02" 20 GA CHANNEL CAP W/
#14 - 13 x 1 1/2" TRUSS HEAD TEK
FASTENERS 12" O/C. W/ BUTYL
SEALANT AT FLANGES (MARRY
TO VERTICAL SEALANT)

CONTINUOUS RETAINER FOR
SINGLE PLY MEMBRANE W/
FASTENERS 12" O/C MAX.
(NOT BY ONEDEK™ SUPPLIER)

NOTE: BUTYL SEALANT AT WALL
JOINERY NOT SHOWN FOR CLARITY.
ENSURE ALL SEALANTS MARRY TO
CREATE A THERMAL ENVELOPE.

FILL VOID WITH ONE-PART
EXPANDING FOAM SEALANT

POP RIVET 12" O/C
CONTINUOUS THERMAL CUT FOR
COLD STORAGE APPLICATIONS

"WC-01" PANEL CLIP W/

() 1/4 - 14 x _ TEK 3 FASTENERS
W/O WASHER AT PANEL JOINT

PANEL THK. 3" MIN.
OR 3" MIN.

1" x 3/16" BUTYL TAPE SEALANT

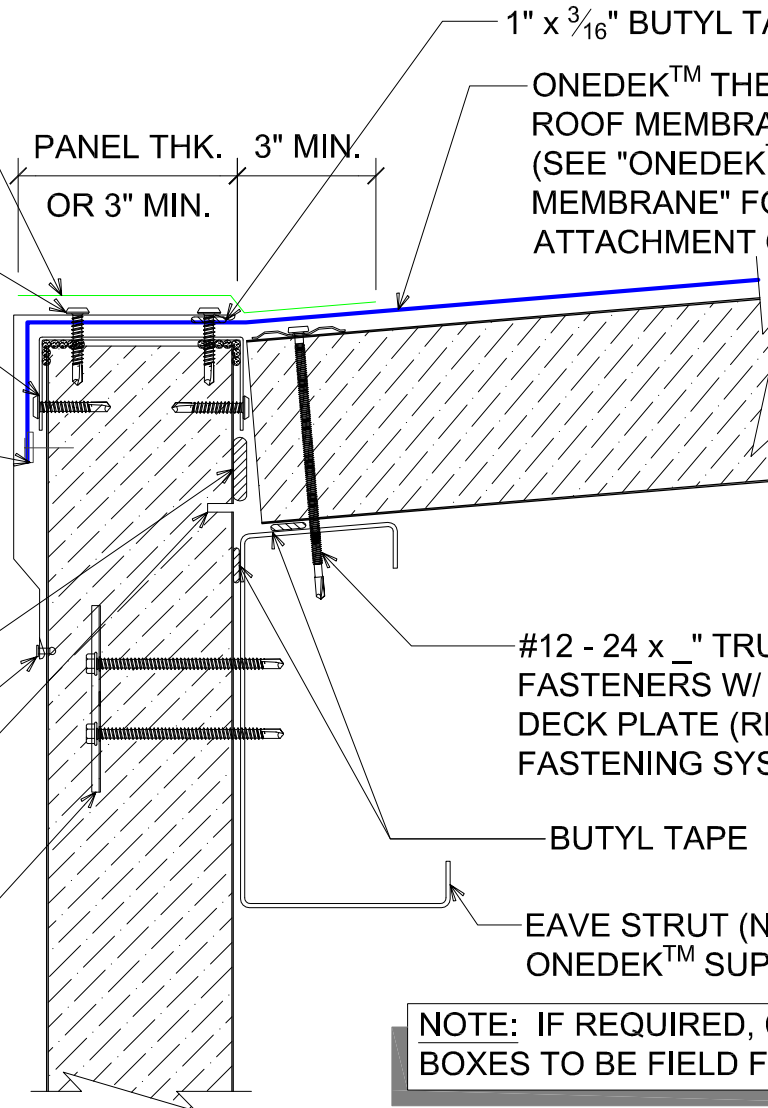
ONEDEK™ THERMOPLASTIC
ROOF MEMBRANE
(SEE "ONEDEK™ ROOFING
MEMBRANE" FOR
ATTACHMENT OPTIONS)

#12 - 24 x _" TRUFAST PURLIN
FASTENERS W/ "RP-01" ROOF
DECK PLATE (REFER TO RD1
FASTENING SYSTEM)

BUTYL TAPE

EAVE STRUT (NOT BY
ONEDEK™ SUPPLIER)

NOTE: IF REQUIRED, CORNER
BOXES TO BE FIELD FABRICATED.



DRAINING PERIMETER EDGE METAL W/ MEMBRANE COATING (GUTTERLESS EAVE)

(SECTION VIEW)

DETAIL:	DRAINING PERIMETER EDGE METAL (GUTTERLESS EAVE)		
APPLICATION:	RD1 ROOF DECK, COMMERCIAL & INDUSTRIAL, COLD-STORAGE	DATE:	06/18/19
AWIP DETAIL NUMBER:	RDR-CJCS-GE-001	DRAWN BY:	MMF
		SHEET:	1 OF 1

929 ALDRIDGE ROAD
VACAVILLE, CA 95688
TEL: (707) 359-2280
FAX: (707) 359-2286
WWW.AWIPANELS.COM

