

6" WIDE CONTINUOUS 5.5 MIL FSK FACING TAPE AT END JOINTS

ONEDEK® THERMOPLASTIC ROOF MEMBRANE (SEE "ONEDEK® ROOFING MEMBRANE" FOR ATTACHMENT OPTIONS)

#12 - 24 x _" TRUFEST PURLIN FASTENERS W/ "RP-01" ROOF DECK PLATE (REFER TO RD1 FASTENING SYSTEM)

NOTE: ENGINEER OF RECORD TO DETERMINE THE REQUIRED ATTACHMENT METHOD OF SUPPORT ANGLE TO PURLIN AND ENSURE CONTINUITY OF SHEAR LOAD TRANSFER AT THIS LOCATION.

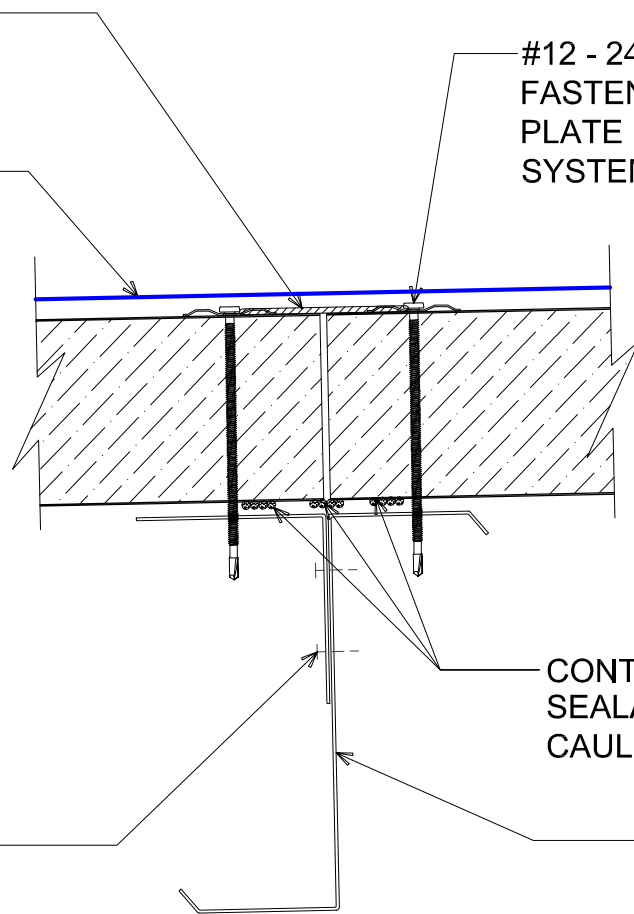
SUPPORT ANGLE AND FASTENERS BY OTHERS (NOT BY ONEDEK® SUPPLIER)

CONTINUOUS 1/2" Ø BEAD OF BUTYL SEALANT (CONNECT ENDS OF CAULK BEADS TO CLOSE AND BOX)

SECONDARY FRAMING (NOT BY ONEDEK® SUPPLIER)

BUTT JOINT DETAIL

(SECTION VIEW)



DETAIL:

BUTT JOINT

APPLICATION:

RD1 ROOF DECK, COMMERCIAL & INDUSTRIAL, COLD-STORAGE

AWIP DETAIL NUMBER:

RDR-CJCS-PT-001

DATE:

04/12/21

DRAWN BY:

MMF

SHEET:

1

OF 1

929 ALDRIDGE ROAD
VACAVILLE, CA 95688
TEL: (707) 359-2280
FAX: (707) 359-2286
WWW.AWIPANELS.COM

