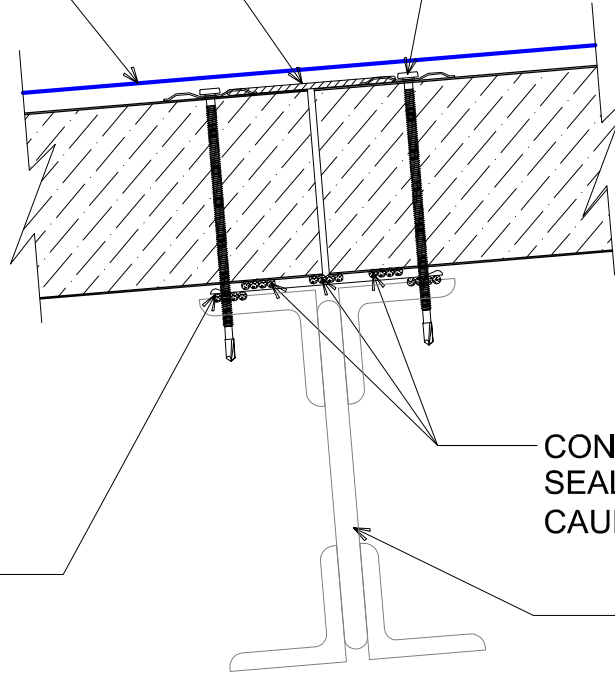


6" WIDE CONTINUOUS 6 MIL FOIL SKRIM CRAFT FACING TAPE AT END JOINTS (NOT BY ONEDEK™ SUPPLIER)

ONEDEK™ THERMOPLASTIC ROOF MEMBRANE (SEE "ONEDEK™ ROOFING MEMBRANE" FOR ATTACHMENT OPTIONS)

#12 - 24 x _" TRUFEST PURLIN FASTENERS W/ "RP-01" ROOF DECK PLATE (REFER TO RD1 FASTENING SYSTEM)



"JC-01" JOINT COVER (SET TRIM IN BUTYL SEALANT)

CONTINUOUS 1/2" Ø BEAD OF BUTYL SEALANT (CONNECT ENDS OF CAULK BEADS TO CLOSE AND BOX)

SECONDARY FRAMING (NOT BY ONEDEK™ SUPPLIER)

BUTT JOINT DETAIL

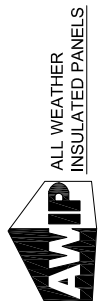
(SECTION VIEW)

DETAIL:

BUTT JOINT

APPLICATION:
RD1 ROOF DECK, COMMERCIAL & INDUSTRIAL, COLD-STORAGE
AWIP DETAIL NUMBER:
RDR-CJCS-PT-003

929 ALDRIDGE ROAD
VACAVILLE, CA 95688
TEL: (707) 359-2280
FAX: (707) 359-2286
WWW.AWIPANELS.COM



DATE: 07/09/19

DRAWN BY: MMF

SHEET: 1 OF 1