

SELF-ADHERING MEMBRANE FLASHING

"RF-03" ROOF FASCIA W/  
#14 - 13 x 1 1/2" TRUSS HEAD  
TEK FASTENERS 12" O/C

"BC-02" 20 GA CHANNEL CAP W/  
#14 - 13 x 1 1/2" TRUSS HEAD TEK  
FASTENERS 12" O/C. W/ BUTYL  
SEALANT AT FLANGES (MARRY  
TO VERTICAL SEALANT)

NOTE: BUTYL SEALANT AT WALL  
JOINERY NOT SHOWN FOR CLARITY.  
ENSURE ALL SEALANTS MARRY TO  
CREATE A THERMAL ENVELOPE.

CONTINUOUS RETAINER FOR  
SINGLE PLY MEMBRANE W/  
FASTENERS 12" O/C MAX.  
(NOT BY ONEDEK™ SUPPLIER)

FILL VOID WITH ONE-PART  
EXPANDING FOAM SEALANT

POP RIVET 12" O/C

CONTINUOUS THERMAL CUT FOR  
COLD STORAGE APPLICATIONS

"WC-01" PANEL CLIP W/  
( ) 1/4 - 14 x \_ TEK 3 FASTENERS  
W/O WASHER AT PANEL JOINT

PANEL THK. 3" MIN.  
OR 3" MIN. 3" MIN.  
1" x 3/16" BUTYL TAPE SEALANT

ONEDEK™ THERMOPLASTIC  
ROOF MEMBRANE  
(SEE "ONEDEK™ ROOFING  
MEMBRANE" FOR ATTACHMENT  
OPTIONS)

#12 - 24 x \_" TRUFast  
PURLIN FASTENERS W/  
"RP-01" ROOF DECK  
PLATE \_" O/C

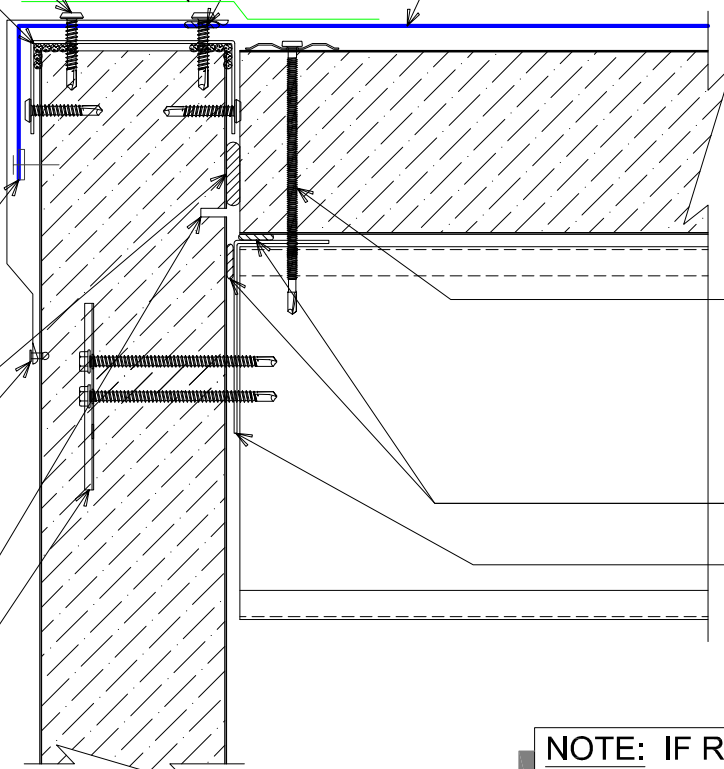
BUTYL TAPE

SECONDARY FRAMING  
& RAKE ANGLE BY  
OTHERS (NOT BY  
ONEDEK™ SUPPLIER)

NOTE: IF REQUIRED, CORNER  
BOXES TO BE FIELD FABRICATED.

# # DRAINING PERIMETER EDGE METAL W/ MEMBRANE COATING (RAKE)

(SECTION VIEW)



DETAIL:

**DRAINING PERIMETER EDGE METAL (RAKE)**

929 ALDRIDGE ROAD  
VACAVILLE, CA 95688  
TEL: (707) 359-2280  
FAX: (707) 359-2286  
WWW.AWIPANELS.COM

ALL WEATHER  
INSULATED PANELS



APPLICATION:  
RD1 ROOF DECK, COMMERCIAL & INDUSTRIAL, COLD STORAGE  
AWIP DETAIL NUMBER:  
RDR-CJCS-RF-001

DATE:

08/12/19

SHEET:

1 OF 1

DRAWN BY:

MMF