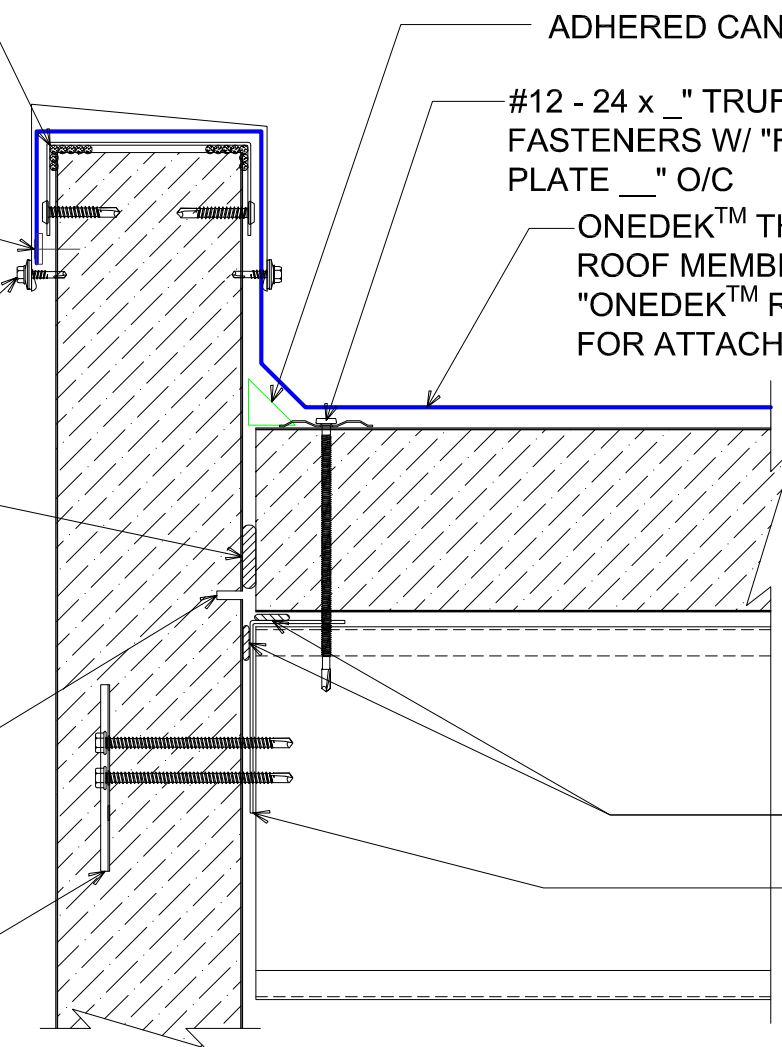


"BC-02" 20 GA CHANNEL CAP W/  
 #14 - 13 x 1½" TRUSS HEAD TEK  
 FASTENERS 12" O/C. W/ BUTYL  
 SEALANT AT FLANGES (MARRY TO  
 VERTICAL SEALANT)  
 CONTINUOUS RETAINER FOR  
 SINGLE PLY MEMBRANE W/  
 FASTENERS 12" O/C MAX.  
 (NOT BY ONEDEK™ SUPPLIER)  
 "PT-X1" PARAPET CAP TRIM  
 W/ ¼ - 14 x 7/8" STITCH TEKS 12" O/C  
 FILL VOID WITH ONE-PART  
 EXPANDING FOAM SEALANT

NOTE: BUTYL SEALANT AT WALL  
 JOINERY NOT SHOWN FOR CLARITY.  
 ENSURE ALL SEALANTS MARRY TO  
 CREATE A THERMAL ENVELOPE.

CONTINUOUS THERMAL  
 CUT FOR COLD STORAGE  
 APPLICATIONS

"WC-01" PANEL CLIP W/  
 ( ) ¼ - 14 x \_ TEK 3 FASTENERS  
 W/O WASHER AT PANEL JOINT



ADHERED CANT STRIP  
 #12 - 24 x \_" TRUFEST PURLIN  
 FASTENERS W/ "RP-01" ROOF DECK  
 PLATE \_" O/C  
 ONEDEK™ THERMOPLASTIC  
 ROOF MEMBRANE (SEE  
 "ONEDEK™ ROOFING MEMBRANE"  
 FOR ATTACHMENT OPTIONS)

BUTYL TAPE  
 SECONDARY  
 FRAMING & RAKE  
 ANGLE BY OTHERS  
 (NOT BY ONEDEK™  
 SUPPLIER)

# # BASE FLASHING AT PARAPET W/ METAL COPING (RAKE)

(SECTION VIEW)

DETAIL:	PARAPET W/ METAL COPING (RAKE)		DATE:	08/12/19	SHEET:	1	OF	1
	APPLICATION:	RD1 ROOF DECK, COMMERCIAL & INDUSTRIAL, COLD-STORAGE	DRAWN BY:	MMF				
929 ALDRIDGE ROAD VACAVILLE, CA 95688 TEL: (707) 359-2280 FAX: (707) 359-2286 WWW.AWIPANELS.COM		