

"WC-01" PANEL CLIP W/
(_) 1/4 - 14 x _ HWH DP3 W/O
WASHER AT PANEL JOINT

BUTYL SEALANT AT
VERTICAL JOINT

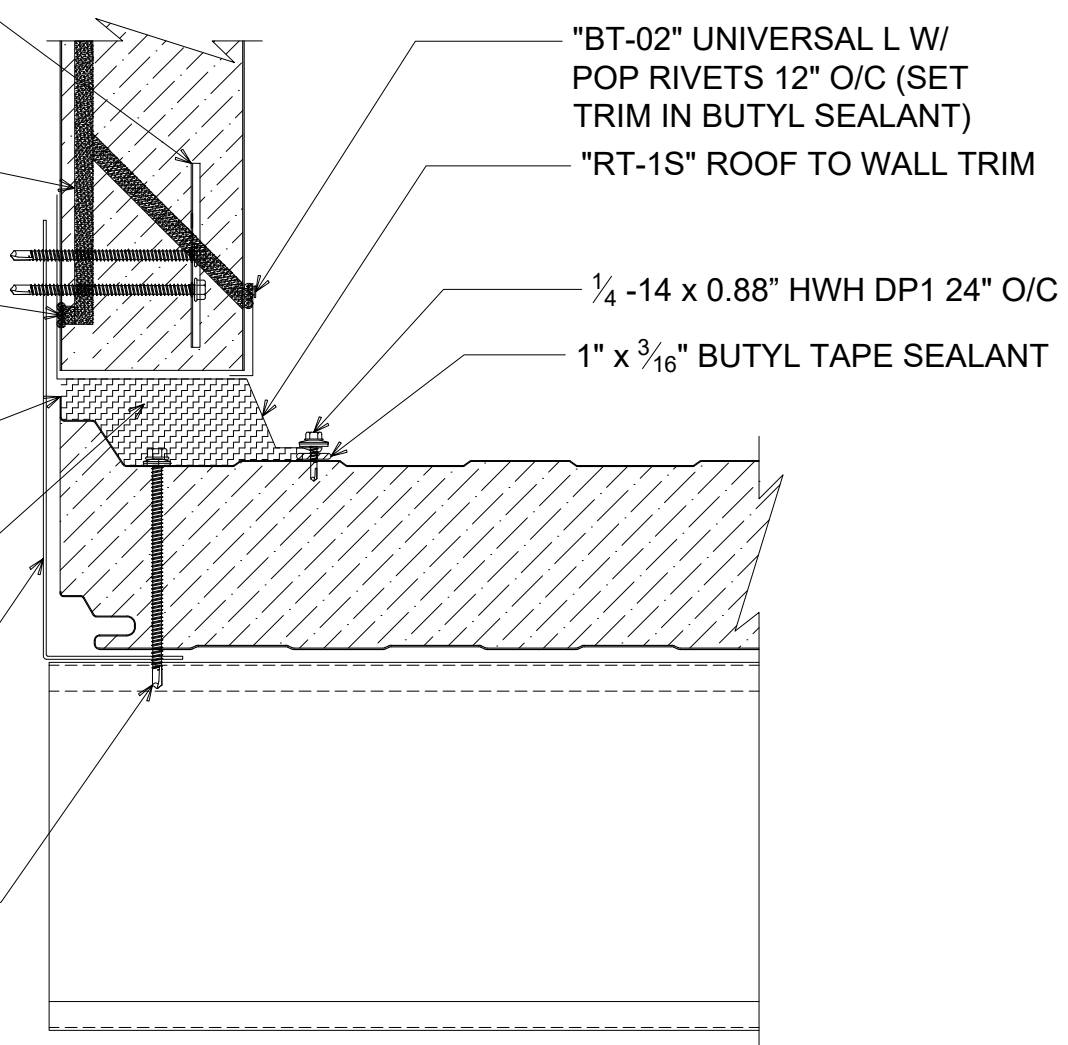
BUTYL SEALANT
(MARRY TO VERTICAL
SEALANT)

FIELD-CUT STANDING
SEAM AS REQUIRED

FIELD-FILL WITH
COMPRESSIBLE INSULATION
(NOT BY IMP SUPPLIER)

SECONDARY FRAMING
& SUPPORT ANGLE
(NOT BY IMP SUPPLIER)

(_) 1/4 - 14 x _ HWH DP3 W/
WASHER AT EACH PURLIN



"BT-02" UNIVERSAL L W/
POP RIVETS 12" O/C (SET
TRIM IN BUTYL SEALANT)

"RT-1S" ROOF TO WALL TRIM

1/4 - 14 x 0.88" HWH DP1 24" O/C

1" x 3/16" BUTYL TAPE SEALANT

RAKE TO WALL

(SECTION VIEW)



DETAIL: RAKE TO WALL

APPLICATION:
SR ROOF, COMMERCIAL & INDUSTRIAL
AWIP DETAIL NUMBER:
SRR-ACH-RW-001

929 ALDRIDGE ROAD
VACAVILLE, CA 95688
TEL: (707) 359-2280
FAX: (707) 359-2286
WWW.AWIPANELS.COM

All Weather
Insulated Panels



SHEET:
1 OF 1

DATE:
10/24/23
DRAWN BY:
MMF