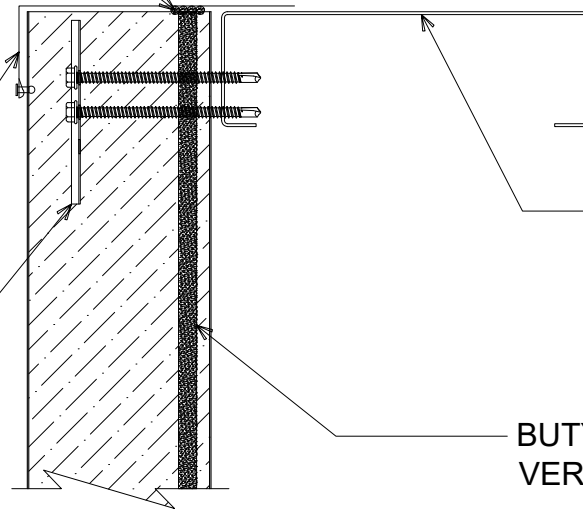


BUTYL SEALANT

"SF-03" SILL FLASHING W/
POP RIVETS 12" O/C

"WC-01" PANEL CLIP W/
($\frac{1}{4}$ " - 14 x $\frac{1}{4}$ " HWH DP3 W/O
WASHER AT PANEL JOINT



FRAMED OPENING
(NOT BY IMP SUPPLIER)

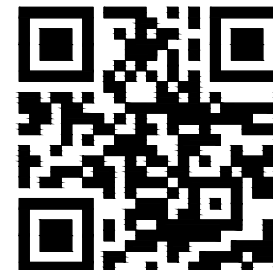
BUTYL SEALANT AT
VERTICAL JOINT

#

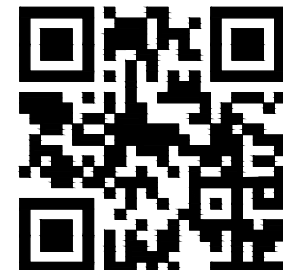
FRAMED OPENING - SILL

(SECTION VIEW)

DETAIL



WINDOW



DETAIL:

FRAMED OPENING - SILL

APPLICATION:

VERTICAL WALL, COMMERCIAL & INDUSTRIAL

AWIP DETAIL NUMBER:

AWW-ACI-FO-003

DATE:

10/23/23

DRAWN BY:

MMF

SHEET:

1

OF 1

929 ALDRIDGE ROAD
VACAVILLE, CA 95688
TEL: (707) 359-2280
FAX: (707) 359-2286
WWW.AWIPANELS.COM

All Weather
Insulated Panels

