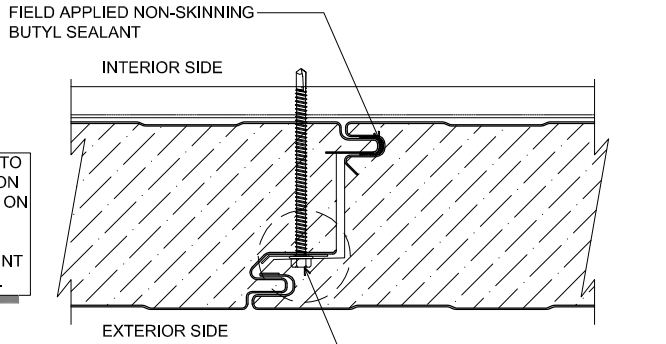


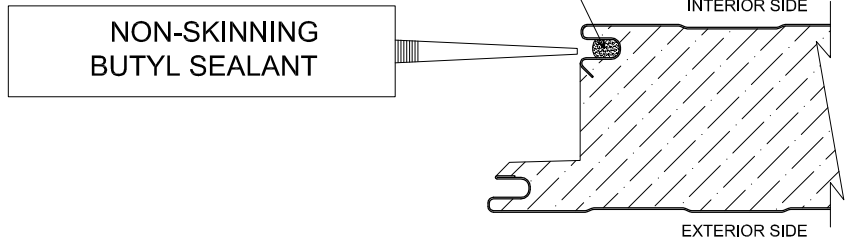
NOTE: REFER TO SECTION 15.2 ON SHEET 7 OF 11 ON WALL PANEL INSTALLATION GUIDE FOR JOINT CONSISTENCY.



PANEL JOINT  
(PLAN VIEW)

NOTE: FILL INTERIOR (LINER) SIDE CAVITY WITH 3/8" DIAMETER BEAD (APPROXIMATE) OF NON-SKINNING BUTYL SEALANT (DO NOT UNDER-FILL).

FILL INTERIOR (LINER) SIDE CAVITY WITH 3/8" DIAMETER BEAD (APPROXIMATE) OF NON-SKINNING BUTYL SEALANT (DO NOT UNDER-FILL).



SEALANT PLACEMENT AT PANEL JOINT  
(PLAN VIEW)

DETAIL:

PANEL JOINT

APPLICATION:  
VERTICAL WALL, COMMERCIAL & INDUSTRIAL  
AWIP DETAIL NUMBER:  
AWW-ACI-P-J-001

DATE:  
03/19/19  
DRAWN BY:  
MMF

SHEET:  
1  
OF  
1

929 ALDRIDGE ROAD  
VACAVILLE, CA 95688  
TEL: (707) 359-2280  
FAX: (707) 359-2286  
WWW.AWIPANELS.COM

