

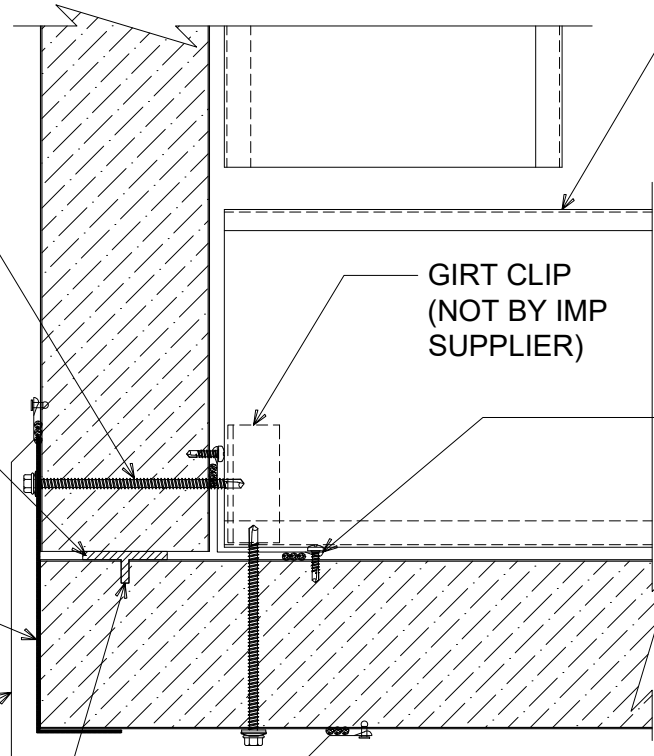
() ¼ - 14 x _ HWH DP3 W/
WASHER, PER PANEL AT
EACH SECONDARY SUPPORT

ONE-PART EXPANDING
FOAM SEALANT (NOT BY
IMP SUPPLIER)

PEEL & STICK BITUMEN
MEMBRANE

"OC-01" OUTSIDE CORNER
W/ POP RIVETS 12" O/C
(SET TRIM IN BUTYL SEALANT)

FIELD-CUT THERMAL BREAK



SECONDARY FRAMING
(NOT BY IMP SUPPLIER)

GIRT CLIP
(NOT BY IMP
SUPPLIER)

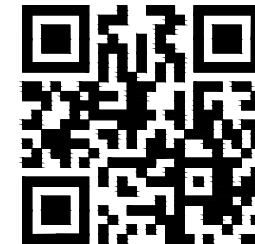
"IC-01" INSIDE CORNER
W/ 10. x 0.75" PPH DP3
@ 12" O/C (SET TRIM IN
BUTYL SEALANT)

NOTE: FIELD CUT STARTING PANEL
AND ENDING PANEL AS REQUIRED
AT CORNER TRANSITION.

CORNER TRANSITION - SCULPTED OUTSIDE (FREEZER)

(PLAN VIEW)

CLICK HERE



DETAIL:

CORNER TRANSITION - SCULPTED OUTSIDE

SHEET:

DATE:
11/18/24

DRAWN BY:
MMF

1

OF
1

APPLICATION:
VERTICAL WALL, COLD-STORAGE

AWIP DETAIL NUMBER:

AVW-ACS-CT-005

929 ALDRIDGE ROAD
VACAVILLE, CA 95688
TEL: (707) 359-2280
FAX: (707) 359-2286
WWW.AWIPANELS.COM

