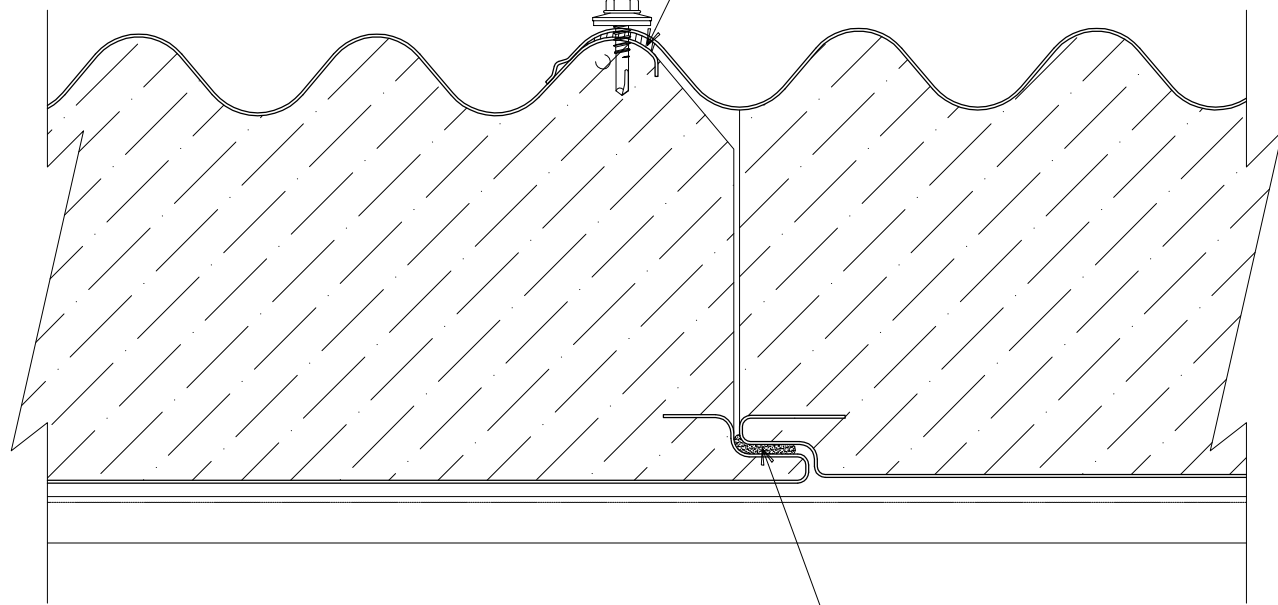


1/4 - 14 x 7/8" STITCH TEKS  
AT 18" ON CENTER

3/4" x 3/32" BUTYL TAPE SEALANT



FIELD-APPLIED CONTINUOUS  
3/8" DIAMETER BEAD (APPROXIMATE)  
OF NON-SKINNING BUTYL SEALANT

# CW36 ROOF PANEL JOINT FASTENING

(SECTION VIEW)

DETAIL:

## PANEL JOINT - STITCH FASTENING

APPLICATION:  
CW36 ROOF, COMMERCIAL & INDUSTRIAL

AWIP DETAIL NUMBER:  
CWR-ACI-P-J-002

DATE:  
05/03/21

DRAWN BY:  
MMF

SHEET:

1  
OF  
1

929 ALDRIDGE ROAD  
VACAVILLE, CA 95688  
TEL: (707) 359-2280  
FAX: (707) 359-2286  
WWW.AWIPANELS.COM

