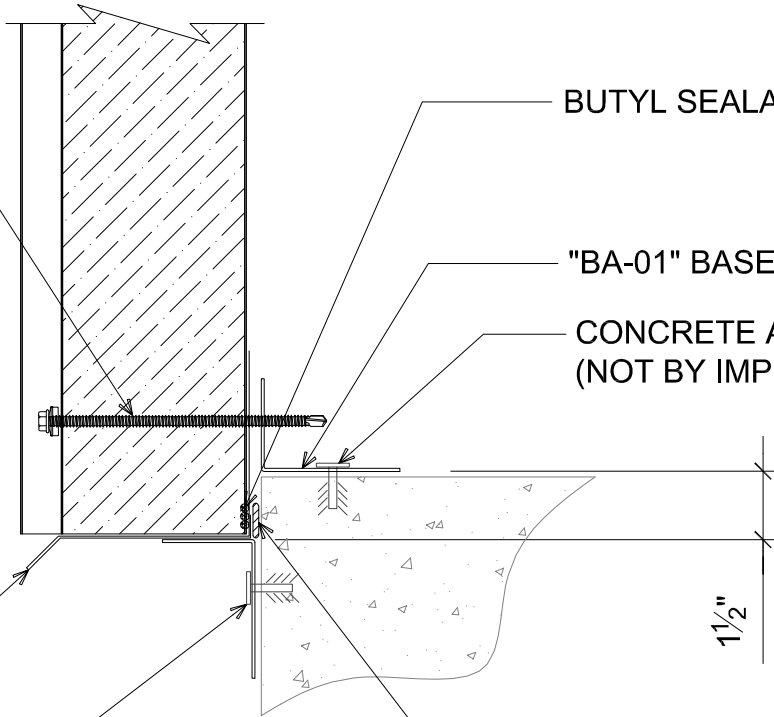


"CW-02" CONCAVE BONDED  
SEAL WASHER W/  $\frac{1}{4}$  - 14 x \_  
TEK 3 FASTENER W/ WASHER  
INTO SUPPORT MEMBER (SEE  
WALL FASTENING LAYOUT)

NOTE: TREAT RAW/UNPAINTED  
EDGE OF EXPOSED METAL W/  
CLEAR ACRYLIC PAINT TO AVOID  
RUSTING (NOT BY IMP SUPPLIER)

"DF-X2" DRIP FLASHING

SUPPORT ANGLE & ALL  
ACCESSORIES BY OTHERS  
(NOT BY IMP SUPPLIER)



BUTYL SEALANT

"BA-01" BASE ANGLE

CONCRETE ANCHORS  
(NOT BY IMP SUPPLIER)

1 1/2"

BUTYL TAPE

# # BASE CONDITION - BYPASS

(SECTION VIEW)

DETAIL:

## BASE CONDITION - BYPASS

APPLICATION:  
CW36 WALL, COMMERCIAL & INDUSTRIAL

AWIP DETAIL NUMBER:

CWW-ACI-BC-001

DATE:  
03/08/19

DRAWN BY:  
MMF

SHEET:

1 OF 1

929 ALDRIDGE ROAD  
VACAVILLE, CA 95688  
TEL: (707) 359-2280  
FAX: (707) 359-2286  
WWW.AWIPANELS.COM

