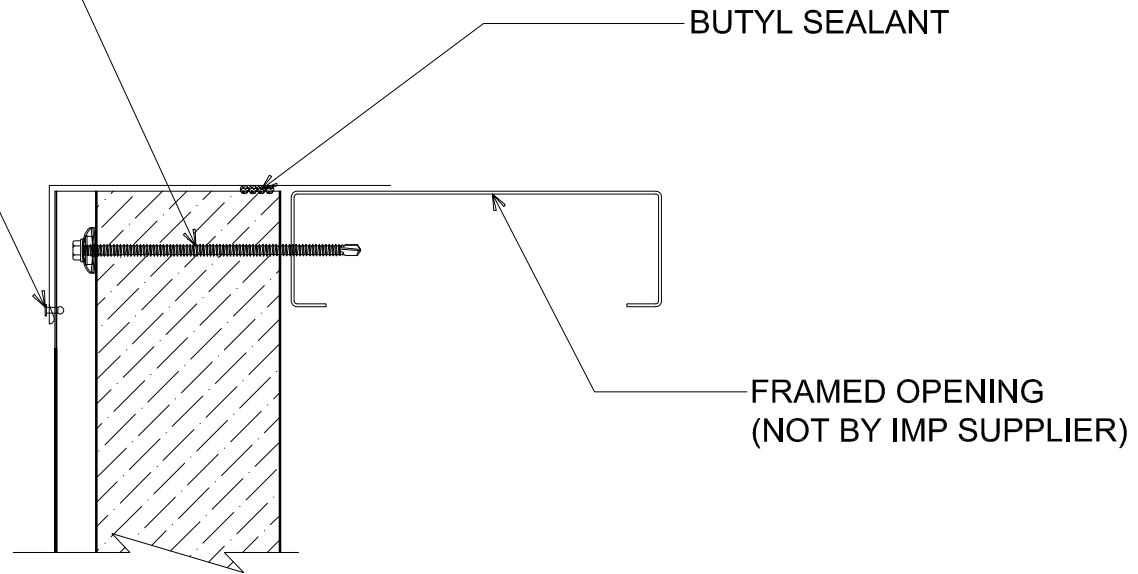


"CW-02" CONCAVE BONDED  
SEAL WASHER W/ 1/4 - 14 x \_  
TEK 3 FASTENER W/ WASHER  
INTO SUPPORT MEMBER (SEE  
WALL FASTENING LAYOUT)

"SF-01" SILL FLASHING W/  
POP RIVETS AT EACH HIGH



# # FRAMED OPENING - SILL

(SECTION VIEW)

DETAIL:

## FRAMED OPENING - SILL

APPLICATION:  
CW36 WALL, COMMERCIAL & INDUSTRIAL  
AWIP DETAIL NUMBER:  
CWW-ACI-FO-003

929 ALDRIDGE ROAD  
VACAVILLE, CA 95688  
TEL: (707) 359-2280  
FAX: (707) 359-2286  
WWW.AWIPANELS.COM



DATE: 04/04/19  
DRAWN BY: MMF  
SHEET: 1 OF 1