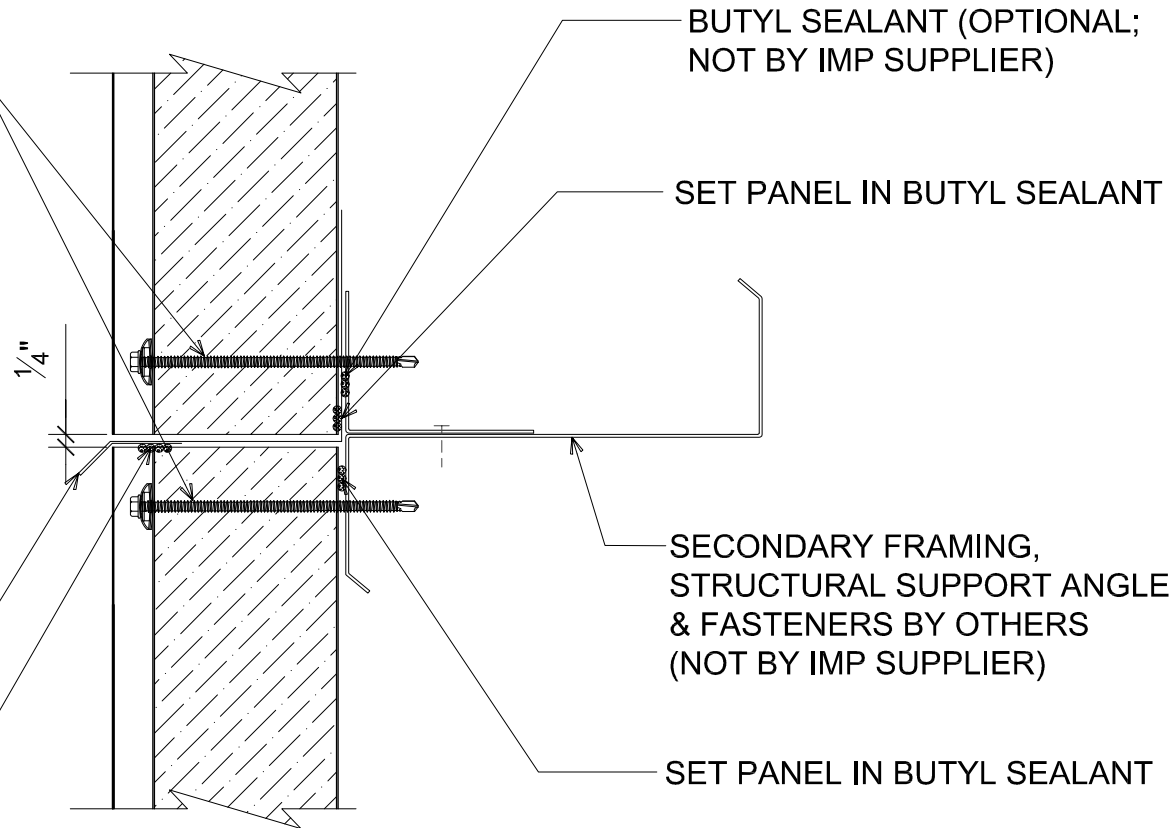


"CW-02" CONCAVE BONDED  
SEAL WASHER W/ 1/4 - 14 x  
TEK 3 FASTENER W/ WASHER  
INTO SUPPORT MEMBER (SEE  
WALL FASTENING LAYOUT)

NOTE: TREAT RAW/UNPAINTED  
EDGE OF EXPOSED METAL W/  
CLEAR ACRYLIC PAINT TO AVOID  
RUSTING (NOT BY IMP SUPPLIER)

"DF-03" DRIP FLASHING

BUTYL SEALANT



BUTYL SEALANT (OPTIONAL;  
NOT BY IMP SUPPLIER)

SET PANEL IN BUTYL SEALANT

SECONDARY FRAMING,  
STRUCTURAL SUPPORT ANGLE  
& FASTENERS BY OTHERS  
(NOT BY IMP SUPPLIER)

SET PANEL IN BUTYL SEALANT

# # STACK JOINT

(SECTION VIEW)

DETAIL:

## STACK JOINT

APPLICATION:  
CW36 WALL, COMMERCIAL & INDUSTRIAL  
AWIP DETAIL NUMBER:  
CWW-ACI-SJ-001

929 ALDRIDGE ROAD  
VACAVILLE, CA 95688  
TEL: (707) 359-2280  
FAX: (707) 359-2286  
WWW.AWIPANELS.COM

ALL WEATHER  
INSULATED PANELS



SHEET:

DATE:  
03/08/19

DRAWN BY:  
MMF

1 OF 1