

HR\_ INSIDE CLOSURE STRIP  
W/ 1" x 3/16" BUTYL TAPE  
SEALANT AT TOP & BOTTOM

"GH-01" GUTTER HANGER AT  
INTERIOR HI-RIBS 40" O/C  
ATTACH W/ (4) 1/4 - 14 x 7/8"  
STITCH TEKS

1/4 - 14 x 7/8" STITCH  
TEKS 6" O/C

"GT-\_\_" GUTTER TRIM

"BB-01" BIRD BLOCK W/  
1/4 - 14 x 7/8" STITCH TEK 12" O/C

"WC-01" PANEL CLIP W/  
( ) 1/4 - 14 x \_ TEK 3 FASTENERS  
W/O WASHER AT PANEL JOINT

BUTYL SEALANT AT  
VERTICAL JOINT

FIELD-FILL W/ COMPRESSIBLE  
INSULATION  
(NOT BY IMP SUPPLIER)

(3) 1/4 - 14 x \_ TEK 3 FASTENERS  
W/ WASHER, PER PANEL  
(SPACED EVENLY)

BUTYL TAPE SEALANT

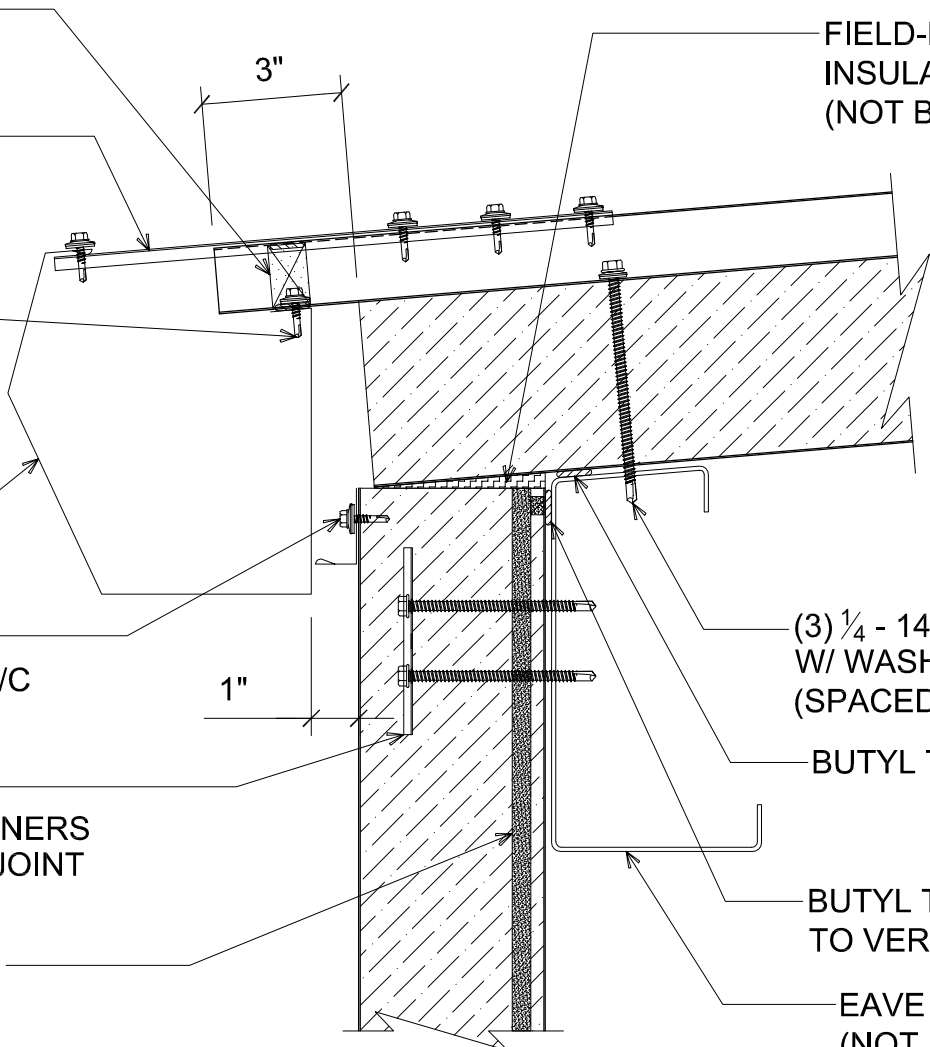
BUTYL TAPE SEALANT (MARRY  
TO VERTICAL SEALANT)

EAVE STRUT  
(NOT BY IMP SUPPLIER)

# # EAVE W/ GUTTER

(SECTION VIEW)

NOTE: FIELD-REMOVE FOAM  
& LINER AT CUTBACK.



DETAIL: **EAVE WITH GUTTER**  
APPLICATION: HR ROOF, COMMERCIAL & INDUSTRIAL  
AWIP DETAIL NUMBER: HRR-ACH-EG-001

929 ALDRIDGE ROAD  
VACAVILLE, CA 95688  
TEL: (707) 359-2280  
FAX: (707) 359-2286  
WWW.AWIPANELS.COM

