

1/4 - 14 x 0.88" HWH DP1 6" O/C

"HRC-__" METAL CLOSURE, REFER TO SHEET __ FOR FASTENING INFORMATION

HR_ OUTSIDE CLOSURE STRIP SET IN 1" x 3/16" BUTYL TAPE SEALANT AT TOP AND BOTTOM

FIELD-FILL W/ COMPRESSIBLE INSULATION (NOT BY IMP SUPPLIER)

"HE-_H" HIGH EAVE TRIM

POP RIVETS 12" O/C

"WC-01" PANEL CLIP W/ () 1/4 - 14 x _ HWH DP3 W/O WASHER AT PANEL JOINT

1/2"

1" x 3/16" BUTYL TAPE SEALANT AT TOP AND BOTTOM

NOTE: BARE HRC- PROVIDED FOR PROJECTS WITH ROOF SLOPE ≤ 1:12 AND EAVE HEIGHT ≥ 20'.

(3) 1/4 - 14 x _ HWH DP3 W/ WASHER, PER PANEL (SPACED EVENLY)

BUTYL TAPE SEALANT

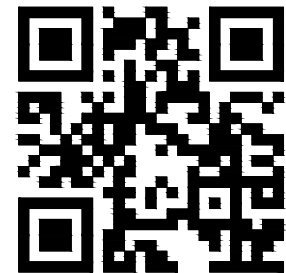
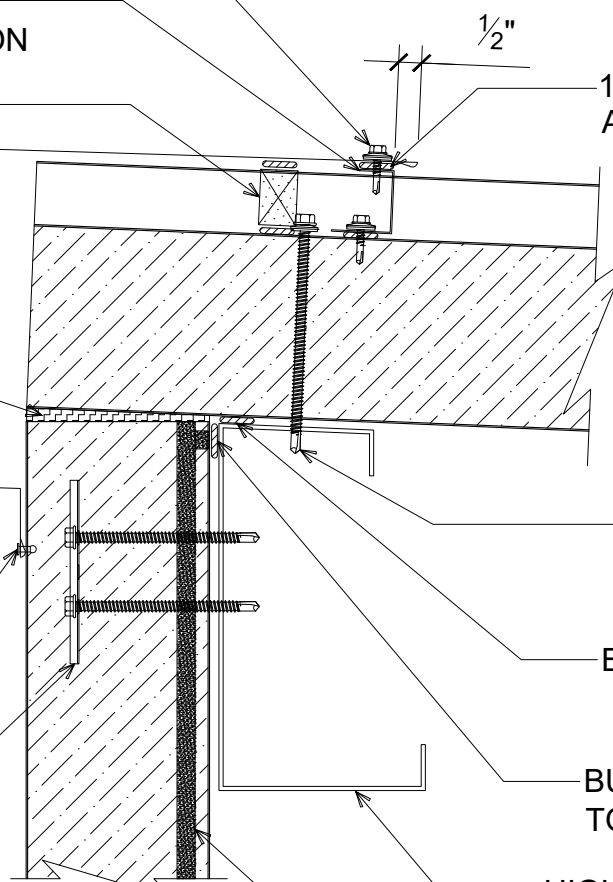
BUTYL TAPE SEALANT (MARRY TO VERTICAL SEALANT)

HIGH EAVE STRUT (NOT BY IMP SUPPLIER)

BUTYL SEALANT AT VERTICAL JOINT

HIGH EAVE

(SECTION VIEW)



DETAIL: HIGH EAVE

929 ALDRIDGE ROAD
VACAVILLE, CA 95688
TEL: (707) 359-2280
FAX: (707) 359-2286
WWW.AWIPANELS.COM

All Weather
Insulated Panels



APPLICATION:
HR ROOF, COMMERCIAL & INDUSTRIAL
AWIP DETAIL NUMBER:
HRR-ACH-HE-001

DATE:
11/02/23
DRAWN BY:
MMF

SHEET:
1 OF 1