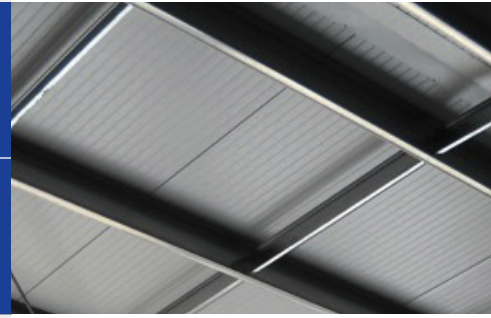




RD1

Product Data Sheet Roof Deck Panels



The RD1 roof deck panel combines into a single component steel deck, insulation and substrate necessary for field application of a white, sin-gle-ply membrane for low slope roofs – an eco-nomical alternative to rigorous, time-consuming and expensive field-assembled roof deck systems. (See OneDek™)

FEATURES AND BENEFITS

- The top side substrate can be either primed steel or an approved facer depending on the roof covering attachment requirements.
- Allows for a working platform during installation.
- Superior deflection resistance.
- Pre-painted 26ga Imperial White embossed reflective interior.
- Easier installation with fewer required trades.
- Eliminates potential for interstitial condensation.
- Meets similar diaphragm shear resistance properties as 1.5" deep 22ga Bdeck@60" span between supports.

PRODUCT PARAMETERS

Panel Thickness:					
2"	2.5"	3"	4"	5"	6"
Insulating Values (R):**					
16	20	24	32	41	49

Panel Width: 40"

Panel Length: from 8' to 50' maximum

Insulation Material: CFC-free foamed-in-place polyisocyanurate foam 2.1 to 2.5 pcf density

Joint Configuration: tongue and groove

Metal facings: 26ga galvanized steel (22ga, 24ga available)

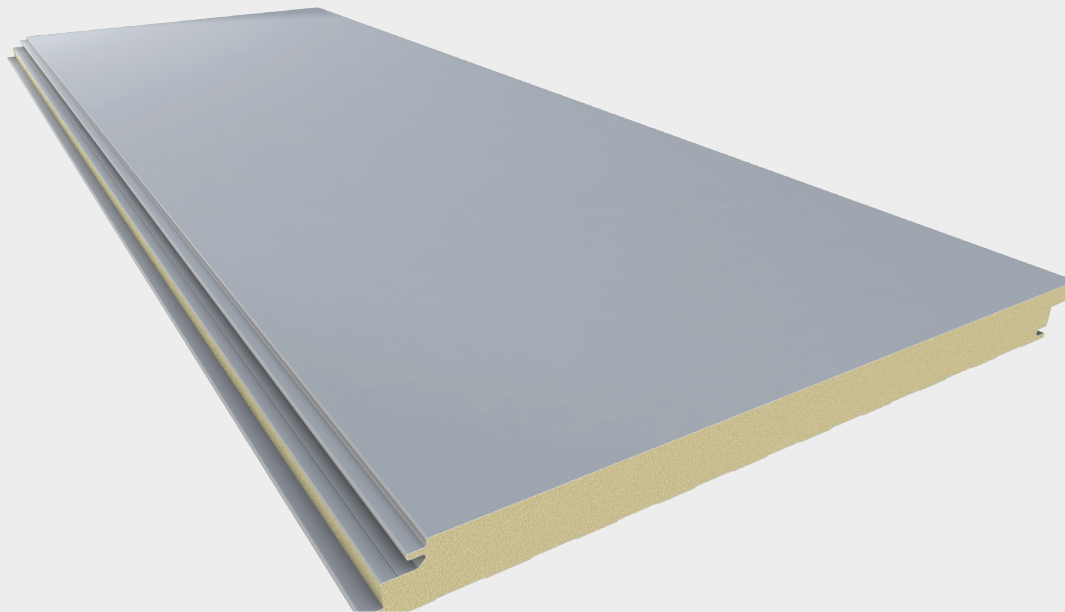
Coatings: Imperial White (Interior)

Accessories: fasteners, sealants, brake formed flashings

TESTED & APPROVED

All Weather Insulated Panels' products have been extensively tested under a variety of North American standards:

- CAN/ULC S102: Flame Spread
- CAN/ULC S126: Flame Spread (Roof)
- ASTM C518/C1363: Thermal Transmission
- ASTM E1680: Air Infiltration
- ASTM E1646: Water Penetration
- ASTM E72: Structural Strength
- ASTM E84: Flame Spread



**R-Value tested in accordance with ASTM C518/C1363 at 40°F mean temperature, adjusted for a wind speed of 15 mph.

U.S.A

929 Aldridge Rd. Vacaville, CA 95688
15000 Panatella Pkwy Little Rock, AR 72206
1-888-970-AWIP (2947)
awipanel.com