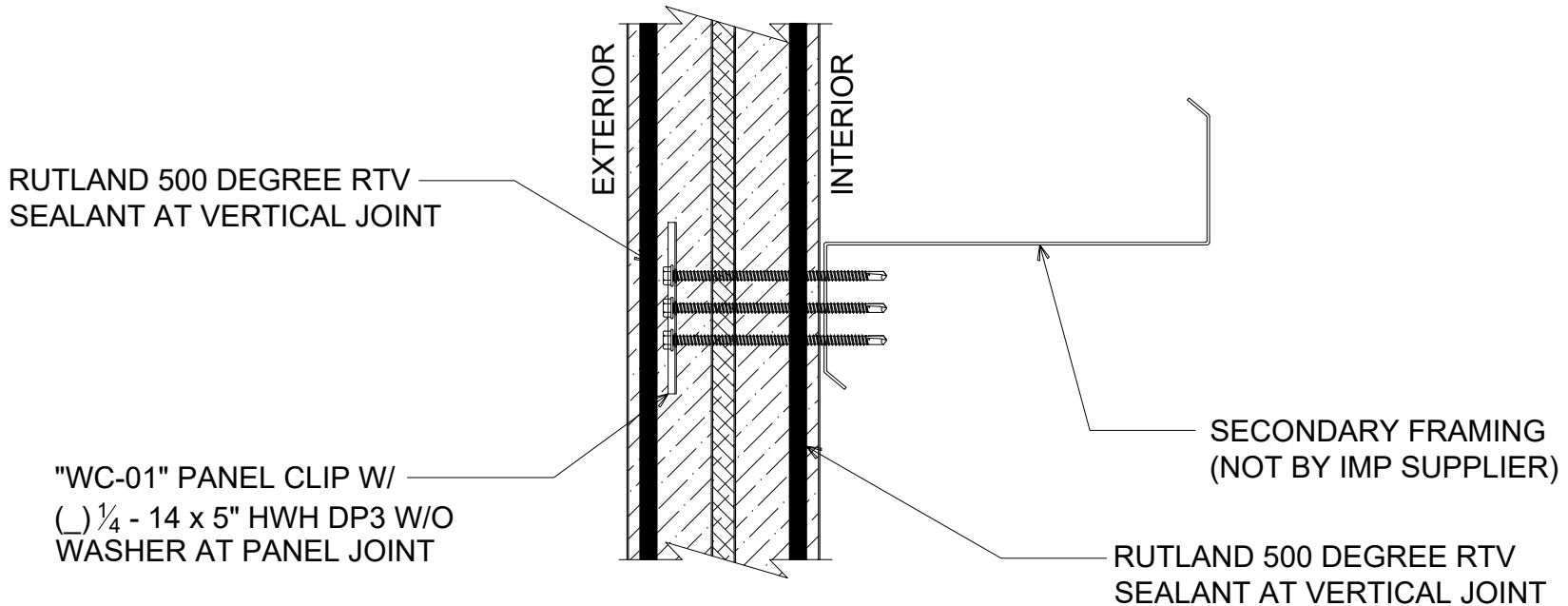


NOTE: FASTENING SCHEDULE
MAY VARY DEPENDING ON
SPECIFIC APPLICATION.



INTERMEDIATE WALL FASTENING

(SECTION VIEW)

DETAIL: INTERMEDIATE WALL FASTENING		DATE: 10/04/23	SHEET: 1
APPLICATION: VERTICAL FIRE WALL, COMMERCIAL & INDUSTRIAL, COLD-CLIMATE		DRAWN BY: MMF	OF 1
AWIP DETAIL NUMBER: FW-CICC-IW-001			

929 ALDRIDGE ROAD
VACAVILLE, CA 95688
TEL: (707) 359-2280
FAX: (707) 359-2286
WWW.AWIPANELS.COM



1/2" PABCO TYPE XXX
GYPSUM BOARD

FIRE SIDE

NON-FIRE SIDE

FIELD-APPLIED RUTLAND 500
DEGREE RTV SEALANT AT
FIRE SIDE

"WC-01" PANEL CLIP W/ () 1/4 - 14 x 5"
HWH DP3 W/O WASHER PER SUPPORT

FIELD-APPLIED RUTLAND 500 DEGREE
RTV SEALANT AT NON-FIRE SIDE

"WC-01" ORIENTATION

NOTE: FILL NON-FIRE SIDE CAVITY AND
FIRE SIDE CAVITY CONTINUOUSLY WITH
1/2" DIAMETER BEAD (APPROXIMATE) OF
RTV SEALANT (DO NOT UNDER-FILL).

PANEL JOINT FASTENING

(PLAN VIEW - EXTERIOR WALL)

DETAIL:

PANEL JOINT FASTENING

APPLICATION:
VERTICAL FIRE WALL, COMMERCIAL & INDUSTRIAL, COLD-CLIMATE

AWIP DETAIL NUMBER:

FWW-CICC-IW-001

DATE:

10/04/23

DRAWN BY:

MMF

SHEET:

1 OF 1

929 ALDRIDGE ROAD
VACAVILLE, CA 95688
TEL: (707) 359-2280
FAX: (707) 359-2286
WWW.AWIPANELS.COM

All Weather
Insulated Panels

