

"BC-02" 20 GA CHANNEL CAP W/  
 #14 - 13 x 1½" TRUSS HEAD TEK  
 FASTENERS 12" O/C. W/ BUTYL  
 SEALANT AT FLANGES (MARRY TO  
 VERTICAL SEALANT)

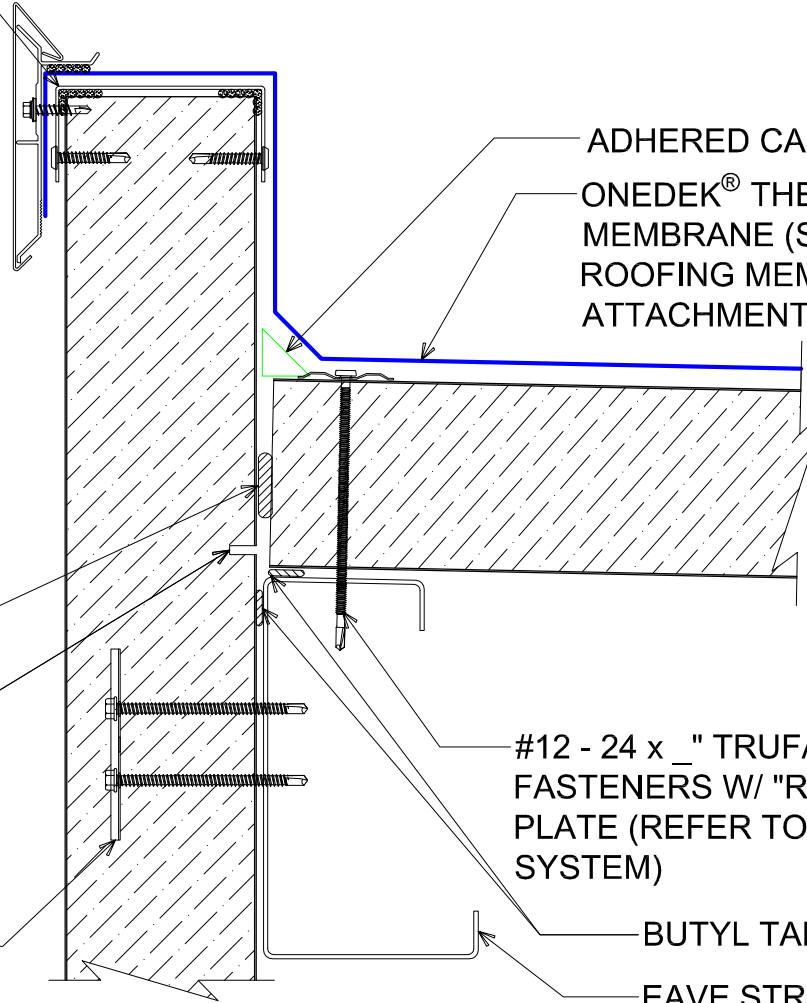
NOTE: REFER TO DETAIL \_E FOR  
 EDGE METAL ASSEMBLY  
 INFORMATION.

NOTE: BUTYL SEALANT AT WALL  
 JOINERY NOT SHOWN FOR CLARITY.  
 ENSURE ALL SEALANTS MARRY TO  
 CREATE A THERMAL ENVELOPE.

FILL VOID WITH ONE-PART  
 EXPANDING FOAM SEALANT

CONTINUOUS THERMAL  
 CUT FOR COLD STORAGE  
 APPLICATIONS

"WC-01" PANEL CLIP W/  
 ( ) ¼ - 14 x \_ TEK 3 FASTENERS  
 W/O WASHER AT PANEL JOINT



ADHERED CANT STRIP

ONEDEK® THERMOPLASTIC ROOF  
 MEMBRANE (SEE "ONEDEK®  
 ROOFING MEMBRANE" FOR  
 ATTACHMENT OPTIONS)

#12 - 24 x \_" TRUFAST PURLIN  
 FASTENERS W/ "RP-01" ROOF DECK  
 PLATE (REFER TO RD1 FASTENING  
 SYSTEM)

BUTYL TAPE

EAVE STRUT (NOT BY  
 ONEDEK® SUPPLIER)

# # PARAPET W/ EDGE METAL (HIGH EAVE)

(SECTION VIEW)

DETAIL:  
**PARAPET W/ EDGE METAL (HIGH EAVE)**

929 ALDRIDGE ROAD  
 VACAVILLE, CA 95688  
 TEL: (707) 359-2280  
 FAX: (707) 359-2286  
 WWW.AWIPANELS.COM

**All Weather**  
 Insulated Panels



APPLICATION:  
 RD1 ROOF DECK, COMMERCIAL & INDUSTRIAL, COLD-STORAGE  
 AWIP DETAIL NUMBER:  
 RDR-CJCS-HEW-005

DATE:  
 08/09/22  
 DRAWN BY:  
 MMF

SHEET:  
 1 OF 1

"BC-02" 20 GA CHANNEL CAP W/  
 #14 - 13 x 1 1/2" TRUSS HEAD TEK  
 FASTENERS 12" O/C. W/ BUTYL  
 SEALANT AT FLANGES (MARRY TO  
 VERTICAL SEALANT)

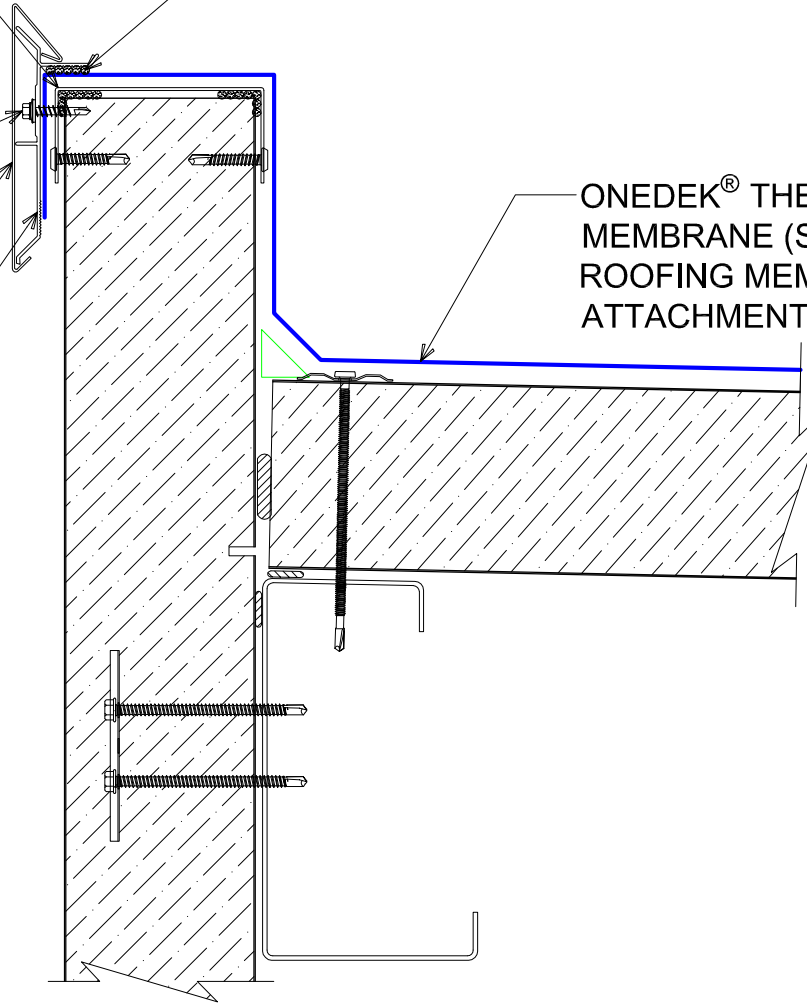
#12-14 x 1 1/4" HWH/BD TEK 2  
 STAINLESS STEEL FASTENERS  
 12" O/C

AF-55 FASCIA COVER (12'-0"  
 LENGTHS)

ANCHOR BAR EXTRUDED

BUTYL SEALANT

ONEDEK® THERMOPLASTIC ROOF  
 MEMBRANE (SEE "ONEDEK®  
 ROOFING MEMBRANE" FOR  
 ATTACHMENT OPTIONS)



# #E PARAPET W/ EDGE METAL (HIGH EAVE)

(SECTION VIEW)

DETAIL:

## PARAPET W/ EDGE METAL (HIGH EAVE), AF-55

APPLICATION:

RD1 ROOF DECK, COMMERCIAL & INDUSTRIAL, COLD-STORAGE

AW/P DETAIL NUMBER:

RDR-CICS-HEW-005

DATE:

08/09/22

DRAWN BY:

MMF

SHEET:

1

OF

1

929 ALDRIDGE ROAD  
 VACAVILLE, CA 95688  
 TEL: (707) 359-2280  
 FAX: (707) 359-2286  
 WWW.AWIPANELS.COM



"BC-02" 20 GA CHANNEL CAP W/  
 #14 - 13 x 1½" TRUSS HEAD TEK  
 FASTENERS 12" O/C. W/ BUTYL  
 SEALANT AT FLANGES (MARRY TO  
 VERTICAL SEALANT)

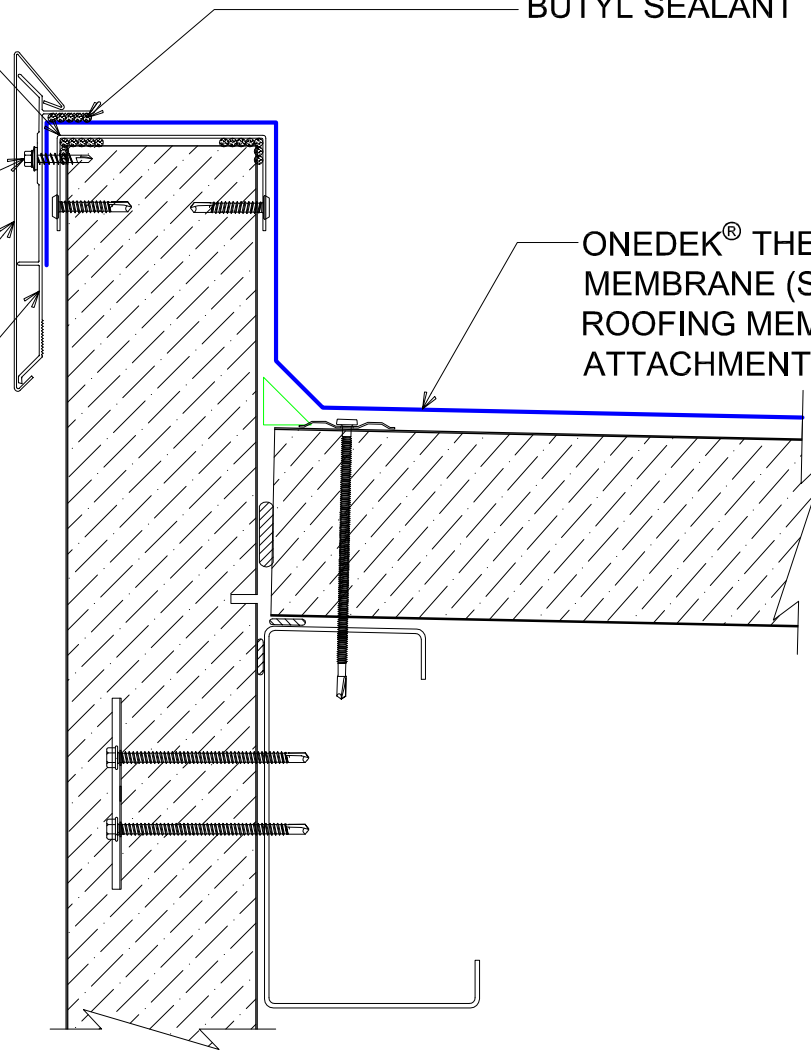
#12-14 x 1¼" HWH/BD TEK 2  
 STAINLESS STEEL FASTENERS  
 12" O/C

AF-70 FASCIA COVER (12'-0"  
 LENGTHS)

ANCHOR BAR EXTRUDED

BUTYL SEALANT

ONEDEK® THERMOPLASTIC ROOF  
 MEMBRANE (SEE "ONEDEK®  
 ROOFING MEMBRANE" FOR  
 ATTACHMENT OPTIONS)



# #E PARAPET W/ EDGE METAL (HIGH EAVE)

(SECTION VIEW)

DETAIL:

## PARAPET W/ EDGE METAL (HIGH EAVE), AF-70

APPLICATION:  
 RD1 ROOF DECK, COMMERCIAL & INDUSTRIAL, COLD-STORAGE  
 AW/P DETAIL NUMBER:  
 RDR-CICS-HEW-005

DATE:  
 08/09/22  
 DRAWN BY:  
 IMF

SHEET:  
 1  
 OF  
 1

929 ALDRIDGE ROAD  
 VACAVILLE, CA 95688  
 TEL: (707) 359-2280  
 FAX: (707) 359-2286  
 WWW.AWIPANELS.COM

