

"BC-02" 20 GA CHANNEL CAP W/  
#14 - 13 x 1½" TRUSS HEAD TEK  
FASTENERS 12" O/C. W/ BUTYL  
SEALANT AT FLANGES (MARRY TO  
VERTICAL SEALANT)

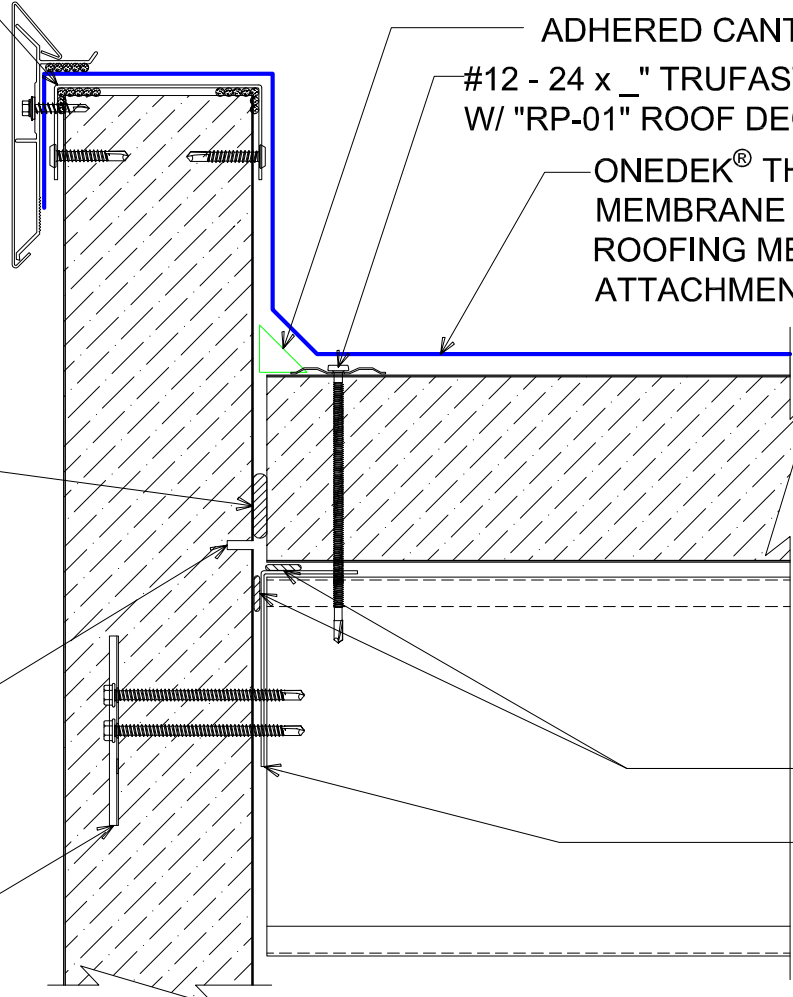
NOTE: REFER TO DETAIL \_E FOR  
EDGE METAL ASSEMBLY  
INFORMATION.

FILL VOID WITH ONE-PART  
EXPANDING FOAM SEALANT

NOTE: BUTYL SEALANT AT WALL  
JOINERY NOT SHOWN FOR CLARITY.  
ENSURE ALL SEALANTS MARRY TO  
CREATE A THERMAL ENVELOPE.

CONTINUOUS THERMAL  
CUT FOR COLD STORAGE  
APPLICATIONS

"WC-01" PANEL CLIP W/  
( ) ¼ - 14 x \_ TEK 3 FASTENERS  
W/O WASHER AT PANEL JOINT



ADHERED CANT STRIP

#12 - 24 x \_ TRUFEST PURLIN FASTENERS  
W/ "RP-01" ROOF DECK PLATE \_" O/C

ONEDEK® THERMOPLASTIC ROOF  
MEMBRANE (SEE "ONEDEK®  
ROOFING MEMBRANE" FOR  
ATTACHMENT OPTIONS)

BUTYL TAPE

SECONDARY  
FRAMING & RAKE  
ANGLE BY OTHERS  
(NOT BY ONEDEK®  
SUPPLIER)

# # PARAPET W/ EDGE METAL (RAKE)

(SECTION VIEW)

DETAIL: PARAPET W/ EDGE METAL (RAKE)

929 ALDRIDGE ROAD  
VACAVILLE, CA 95688  
TEL: (707) 359-2280  
FAX: (707) 359-2286  
WWW.AWIPANELS.COM

**All Weather**  
Insulated Panels



APPLICATION:  
RD1 ROOF DECK, COMMERCIAL & INDUSTRIAL, COLD-STORAGE  
AWIP DETAIL NUMBER:  
RDR-CICS-RW-005

DATE: 08/09/22  
DRAWN BY: MMF

SHEET: 1 OF 1

"BC-02" 20 GA CHANNEL CAP W/  
 #14 - 13 x 1½" TRUSS HEAD TEK  
 FASTENERS 12" O/C. W/ BUTYL  
 SEALANT AT FLANGES (MARRY TO  
 VERTICAL SEALANT)

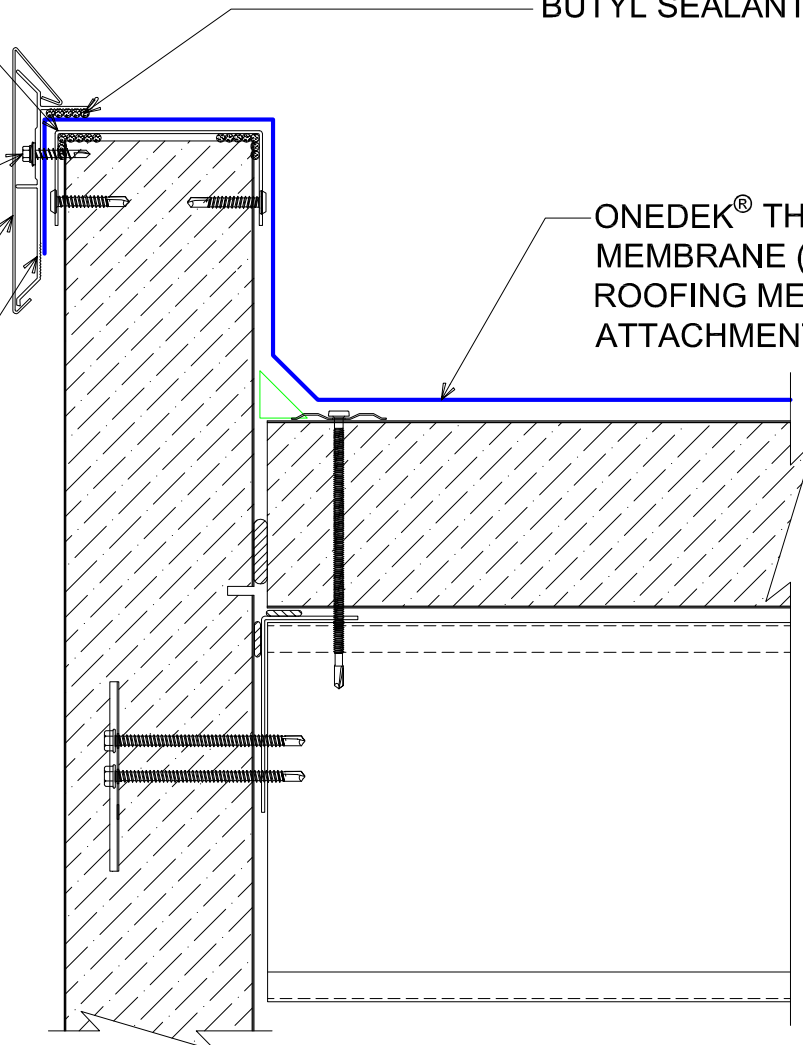
#12-14 x 1¼" HWH/BD TEK 2  
 STAINLESS STEEL FASTENERS  
 12" O/C

AF-55 FASCIA COVER (12'-0"  
 LENGTHS)

ANCHOR BAR EXTRUDED

BUTYL SEALANT

ONEDEK® THERMOPLASTIC ROOF  
 MEMBRANE (SEE "ONEDEK®  
 ROOFING MEMBRANE" FOR  
 ATTACHMENT OPTIONS)



# #E PARAPET W/ EDGE METAL (RAKE)

(SECTION VIEW)

DETAIL: PARAPET W/ EDGE METAL (RAKE), AF-55

DATE:	08/09/22	SHEET:	1	OF	1
DRAWN BY:	MMF				

APPLICATION:  
 RD1 ROOF DECK, COMMERCIAL & INDUSTRIAL, COLD-STORAGE  
 AWP DETAIL NUMBER:  
 RDR-CICS-RW-005

929 ALDRIDGE ROAD  
 VACAVILLE, CA 95688  
 TEL: (707) 359-2280  
 FAX: (707) 359-2286  
 WWW.AWPANELS.COM

"BC-02" 20 GA CHANNEL CAP W/  
 #14 - 13 x 1½" TRUSS HEAD TEK  
 FASTENERS 12" O/C. W/ BUTYL  
 SEALANT AT FLANGES (MARRY TO  
 VERTICAL SEALANT)

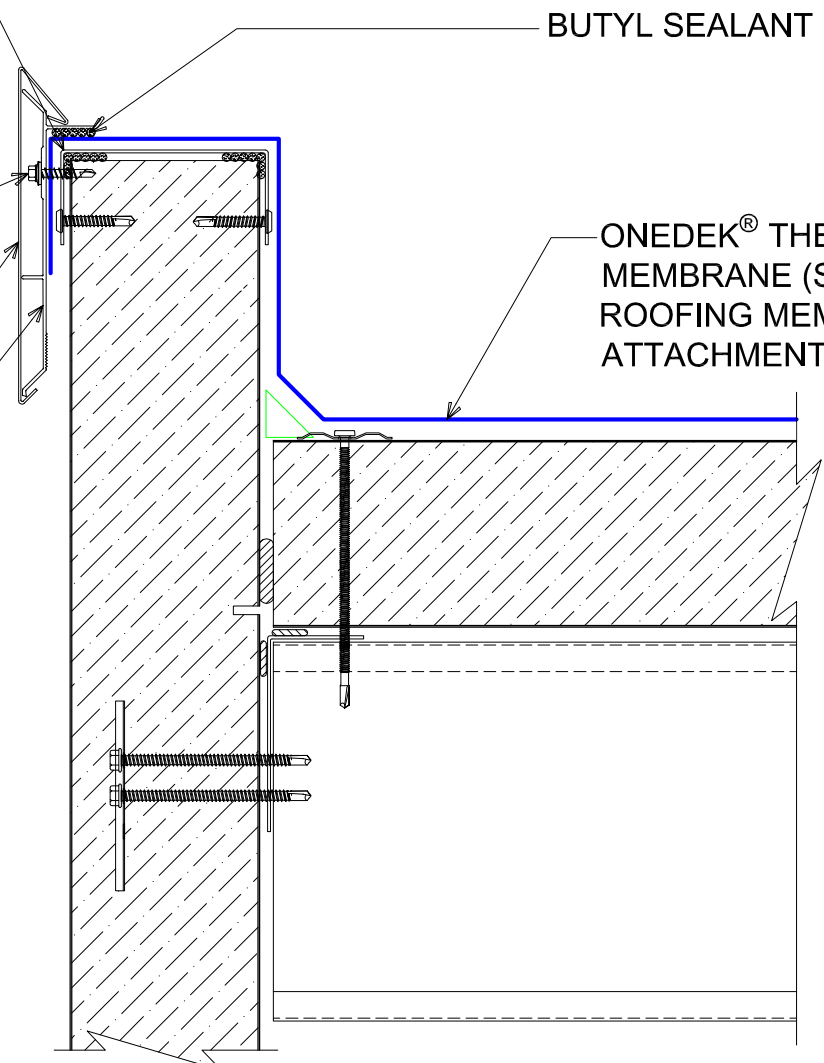
#12-14 x 1¼" HWH/BD TEK 2  
 STAINLESS STEEL FASTENERS  
 12" O/C

AF-70 FASCIA COVER (12'-0"  
 LENGTHS)

ANCHOR BAR EXTRUDED

BUTYL SEALANT

ONEDEK® THERMOPLASTIC ROOF  
 MEMBRANE (SEE "ONEDEK®  
 ROOFING MEMBRANE" FOR  
 ATTACHMENT OPTIONS)



# #E PARAPET W/ EDGE METAL (RAKE)

(SECTION VIEW)

DETAIL:  
**PARAPET W/ EDGE METAL (RAKE), AF-70**

APPLICATION:  
 RD1 ROOF DECK, COMMERCIAL & INDUSTRIAL, COLD-STORAGE  
 AWIP DETAIL NUMBER:  
 RDR-CICS-RW-005

SHEET:  
 DATE: 08/09/22  
 DRAWN BY: MMF  
**1** OF **1**

929 ALDRIDGE ROAD  
 VACAVILLE, CA 95688  
 TEL: (707) 359-2280  
 FAX: (707) 359-2286  
 WWW.AWIPANELS.COM

**All Weather**  
 Insulated Panels

