

"BC-02" 20 GA CHANNEL CAP W/
#14 - 13 x 1½" TRUSS HEAD TEK
FASTENERS 12" O/C. W/ BUTYL
SEALANT AT FLANGES (MARRY TO
VERTICAL SEALANT)

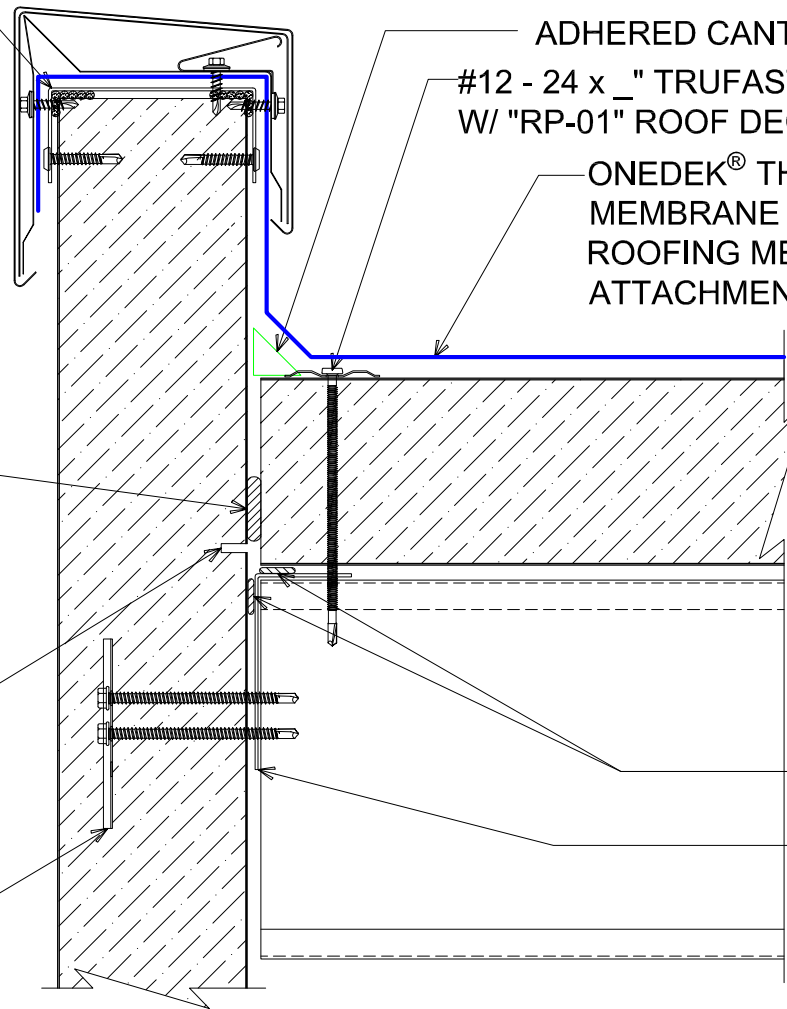
NOTE: REFER TO DETAIL _E FOR
EDGE METAL ASSEMBLY
INFORMATION.

FILL VOID WITH ONE-PART
EXPANDING FOAM SEALANT

NOTE: BUTYL SEALANT AT WALL
JOINERY NOT SHOWN FOR CLARITY.
ENSURE ALL SEALANTS MARRY TO
CREATE A THERMAL ENVELOPE.

CONTINUOUS THERMAL
CUT FOR COLD STORAGE
APPLICATIONS

"WC-01" PANEL CLIP W/
() ¼ - 14 x _ TEK 3 FASTENERS
W/O WASHER AT PANEL JOINT



ADHERED CANT STRIP

#12 - 24 x _ TRUFEST PURLIN FASTENERS
W/ "RP-01" ROOF DECK PLATE _" O/C

ONEDEK® THERMOPLASTIC ROOF
MEMBRANE (SEE "ONEDEK®
ROOFING MEMBRANE" FOR
ATTACHMENT OPTIONS)

BUTYL TAPE

SECONDARY
FRAMING & RAKE
ANGLE BY OTHERS
(NOT BY ONEDEK®
SUPPLIER)

BASE FLASHING AT PARAPET W/ METAL COPING (RAKE)

(SECTION VIEW)

DETAIL:
PARAPET W/ METAL COPING (RAKE)

929 ALDRIDGE ROAD
VACAVILLE, CA 95688
TEL: (707) 359-2280
FAX: (707) 359-2286
WWW.AWIPANELS.COM

All Weather
Insulated Panels



APPLICATION:
RD1 ROOF DECK, COMMERCIAL & INDUSTRIAL, COLD-STORAGE
AWIP DETAIL NUMBER:
RDR-CICS-RW-001

DATE:
08/09/22
DRAWN BY:
MMF

SHEET:
1
OF
1

"BC-02" 20 GA CHANNEL CAP W/
#14 - 13 x 1½" TRUSS HEAD TEK
FASTENERS 12" O/C. W/ BUTYL
SEALANT AT FLANGES (MARRY TO
VERTICAL SEALANT)

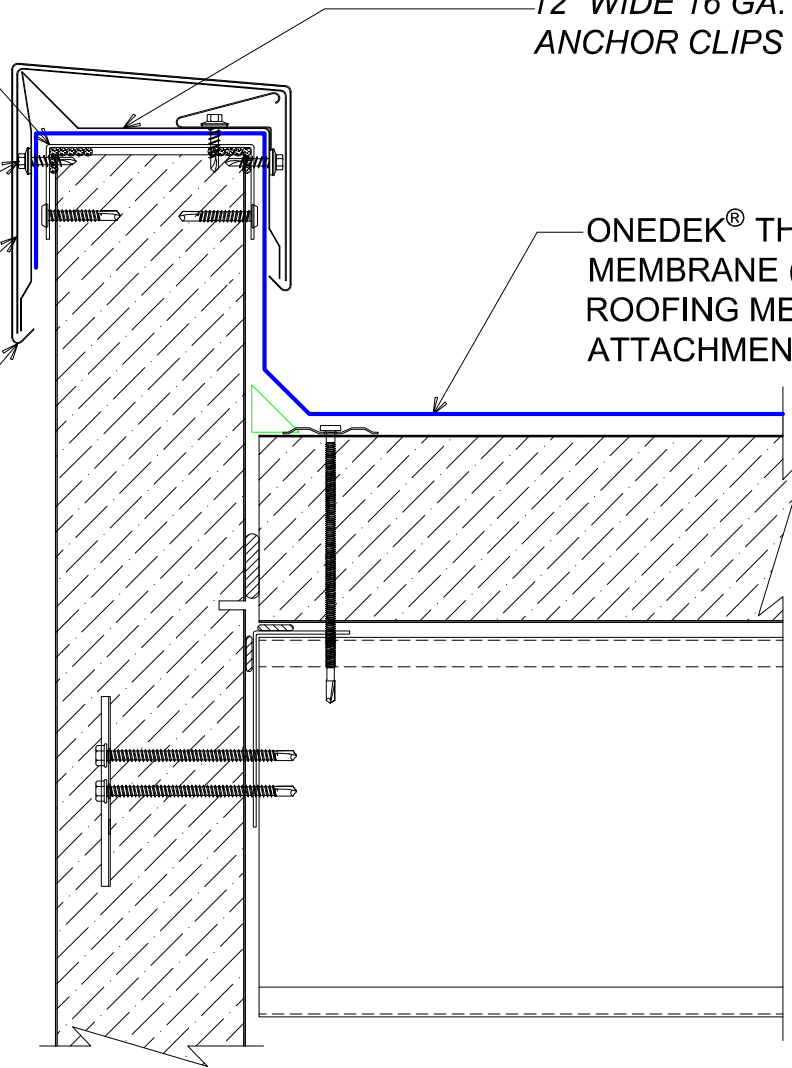
#12-14 x 1" TEKS 3 STAINLESS
STEEL FASTENERS

8" WIDE CONCEALED SPLICE
PLATE, WITH DUAL NON-CURING
SEALANT STRIPS, AT EACH JOINT

GC-64 COPING COVER (12'-0"
LENGTHS)

12" WIDE 16 GA. GALVANIZED
ANCHOR CLIPS 3'-0" O/C

ONEDEK® THERMOPLASTIC ROOF
MEMBRANE (SEE "ONEDEK®
ROOFING MEMBRANE" FOR
ATTACHMENT OPTIONS)



#E BASE FLASHING AT PARAPET W/ METAL COPING (RAKE)

(SECTION VIEW)

DETAIL:

PARAPET W/ METAL COPING (RAKE), GC-64

APPLICATION:

RD1 ROOF DECK, COMMERCIAL & INDUSTRIAL, COLD-STORAGE

AW/P DETAIL NUMBER:

RDR-CICS-RW-001

DATE:

08/09/22

SHEET:

1 OF 1

929 ALDRIDGE ROAD
VACAVILLE, CA 95688
TEL: (707) 359-2280
FAX: (707) 359-2286
WWW.AWIPANELS.COM

