

WOOD NAILER BY OTHERS
(NOT BY ONEDEK® SUPPLIER)

NOTE: REFER TO DETAIL _E FOR EDGE
METAL ASSEMBLY INFORMATION.

NOTE: BUTYL SEALANT
AT WALL JOINERY NOT
SHOWN FOR CLARITY.
ENSURE ALL SEALANTS
MARRY TO CREATE A
THERMAL ENVELOPE.

FILL VOID WITH ONE-PART
EXPANDING FOAM SEALANT

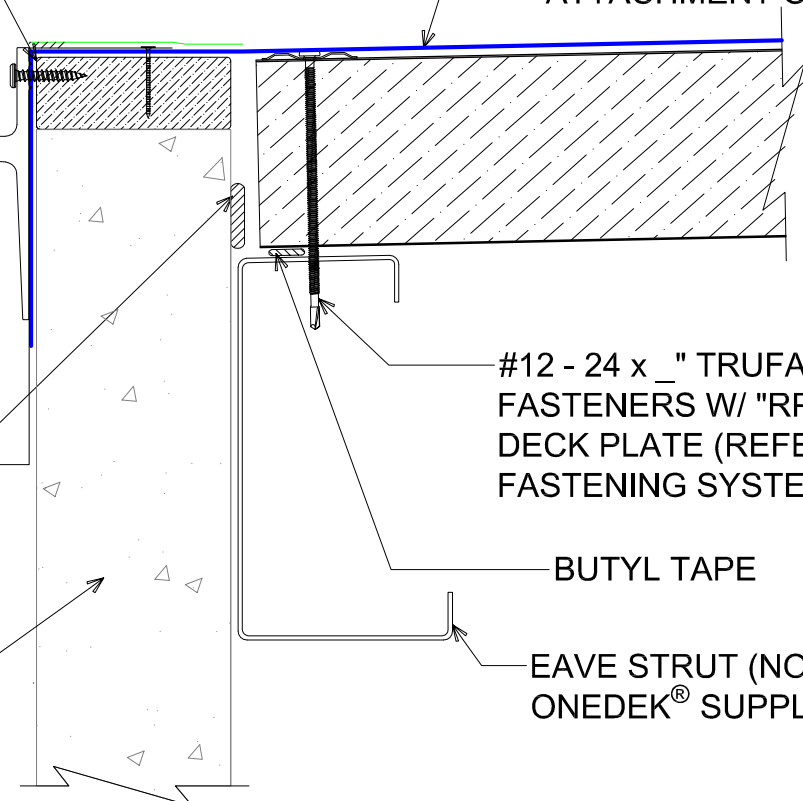
WALL SYSTEM BY OTHERS
(NOT BY ONEDEK® SUPPLIER)

ONEDEK® THERMOPLASTIC
ROOF MEMBRANE (SEE
"ONEDEK® ROOFING
MEMBRANE" FOR
ATTACHMENT OPTIONS)

#12 - 24 x _" TRUFEST PURLIN
FASTENERS W/ "RP-01" ROOF
DECK PLATE (REFER TO RD1
FASTENING SYSTEM)

BUTYL TAPE

EAVE STRUT (NOT BY
ONEDEK® SUPPLIER)



GUTTER W/ PERIMETER EDGE METAL

(SECTION VIEW)

DETAIL:

GUTTER W/ PERIMETER EDGE METAL

929 ALDRIDGE ROAD
VACAVILLE, CA 95688
TEL: (707) 359-2280
FAX: (707) 359-2286
WWW.AWIPANELS.COM

All Weather
Insulated Panels



APPLICATION:
RD1 ROOF DECK, COMMERCIAL & INDUSTRIAL, COLD-STORAGE
AWIP DETAIL NUMBER:
RDR-CJCS-WBO-004

DATE:
06/28/22
DRAWN BY:
MMF

SHEET:
1
OF
1

WOOD NAILER BY OTHERS
(NOT BY ONEDEK® SUPPLIER)

#14 x 1 1/2" UNIVERSAL
FASTENER 2'-0" O/C

2-PIECE EXTRUDED
ALUM. BRACKET 1" WIDE
@ 2'-0" O/C

INDUSTRIAL GUTTER
CHAMFER VERSION - 7 3/4",
FORMED IN 12'-0" LENGTHS W/
CONCEALED SPLICES, 6" WIDE

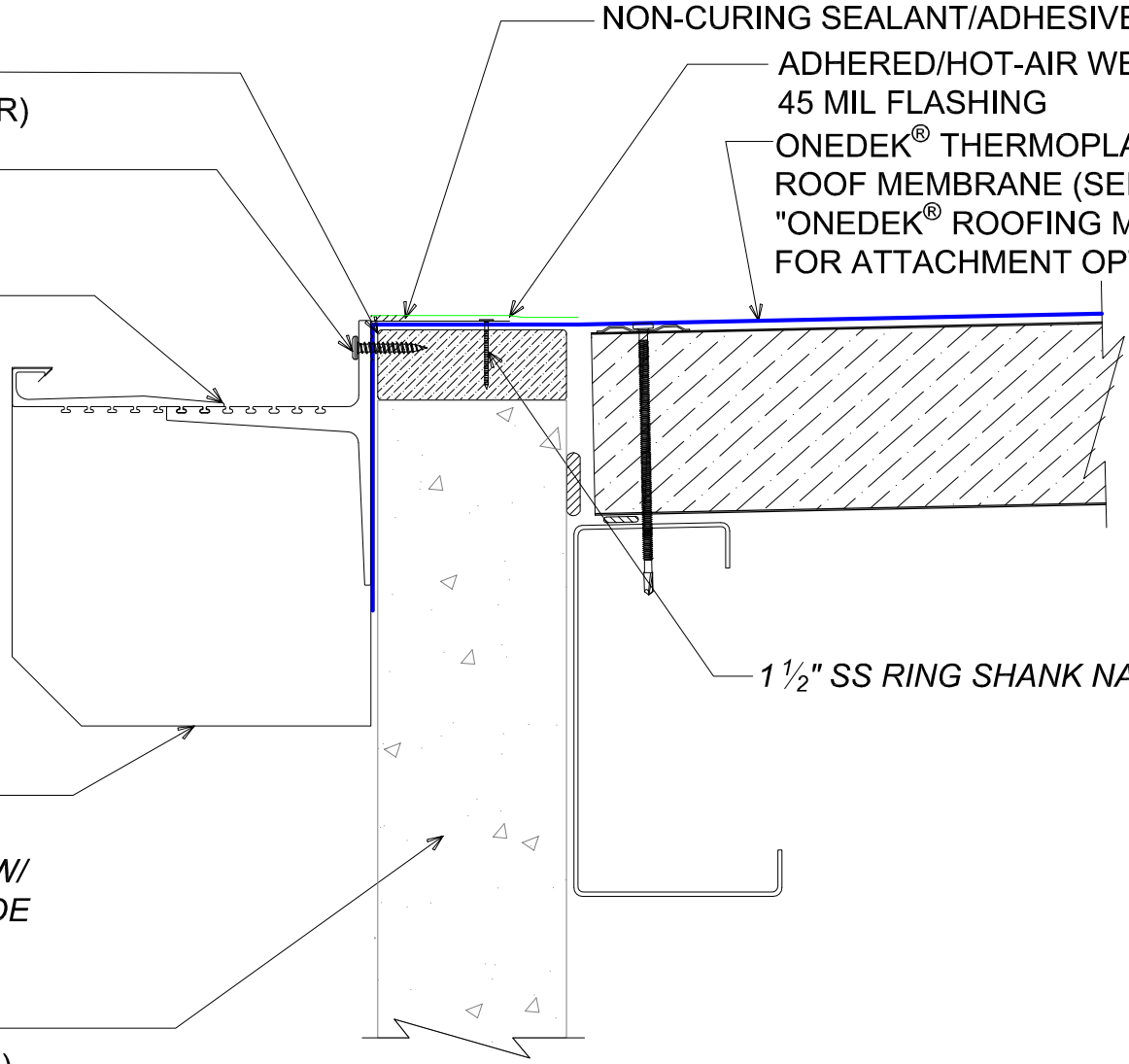
WALL SYSTEM BY OTHERS
(NOT BY ONEDEK® SUPPLIER)

NON-CURING SEALANT/ADHESIVE

ADHERED/HOT-AIR WELDED
45 MIL FLASHING

ONEDEK® THERMOPLASTIC
ROOF MEMBRANE (SEE
"ONEDEK® ROOFING MEMBRANE"
FOR ATTACHMENT OPTIONS)

1 1/2" SS RING SHANK NAIL 12" O/C



#E GUTTER W/ PERIMETER EDGE METAL

(SECTION VIEW)

DETAIL:

GUTTER W/ PERIMETER EDGE METAL, CHAMFER VERSION 7 3/4"

APPLICATION:
RD1 ROOF DECK, COMMERCIAL & INDUSTRIAL, COLD-STORAGE
AWIP DETAIL NUMBER:
RDR-CICS-WBO-004

DATE:
06/28/22

DRAWN BY:
MMF

SHEET:
1 OF 1

929 ALDRIDGE ROAD
VACAVILLE, CA 95688
TEL: (707) 359-2280
FAX: (707) 359-2286
WWW.AWIPANELS.COM

