

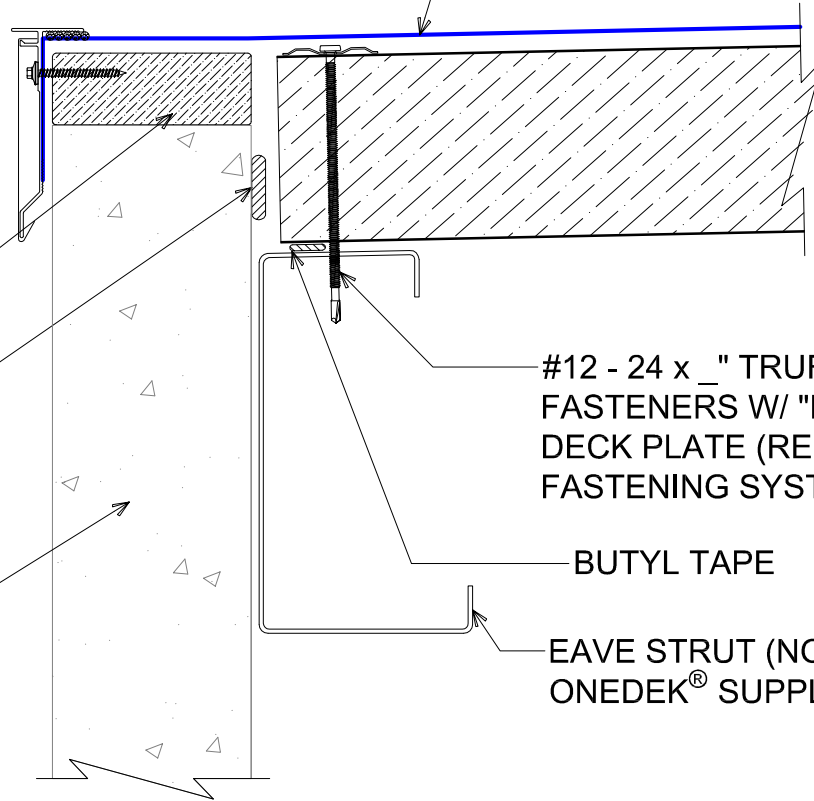
NOTE: REFER TO DETAIL _E FOR
EDGE METAL ASSEMBLY
INFORMATION.

WOOD NAILER BY OTHERS
(NOT BY ONEDEK® SUPPLIER)

FILL VOID WITH ONE-PART
EXPANDING FOAM SEALANT

WALL SYSTEM BY OTHERS
(NOT BY ONEDEK® SUPPLIER)

ONEDEK® THERMOPLASTIC
ROOF MEMBRANE
(SEE "ONEDEK® ROOFING
MEMBRANE" FOR
ATTACHMENT OPTIONS)



#12 - 24 x 1/2" TRUFAST PURLIN
FASTENERS W/ "RP-01" ROOF
DECK PLATE (REFER TO RD1
FASTENING SYSTEM)

BUTYL TAPE

EAVE STRUT (NOT BY
ONEDEK® SUPPLIER)

DRAINING PERIMETER EDGE METAL (GUTTERLESS EAVE)

(SECTION VIEW)

DETAIL: DRAINING PERIMETER EDGE METAL (GUTTERLESS EAVE)		SHEET: 1 OF 1
APPLICATION: RD1 ROOF DECK, COMMERCIAL & INDUSTRIAL, COLD-STORAGE	DATE: 08/09/22	DRAWN BY: MMF
AWIP DETAIL NUMBER: RDR-CICS-WBO-005		

929 ALDRIDGE ROAD
VACAVILLE, CA 95688
TEL: (707) 359-2280
FAX: (707) 359-2286
WWW.AWIPANELS.COM



ANCHOR BAR EXTRUDED

AFDE-45 DRIP EDGE COVER (12'-0"
LENGTHS)

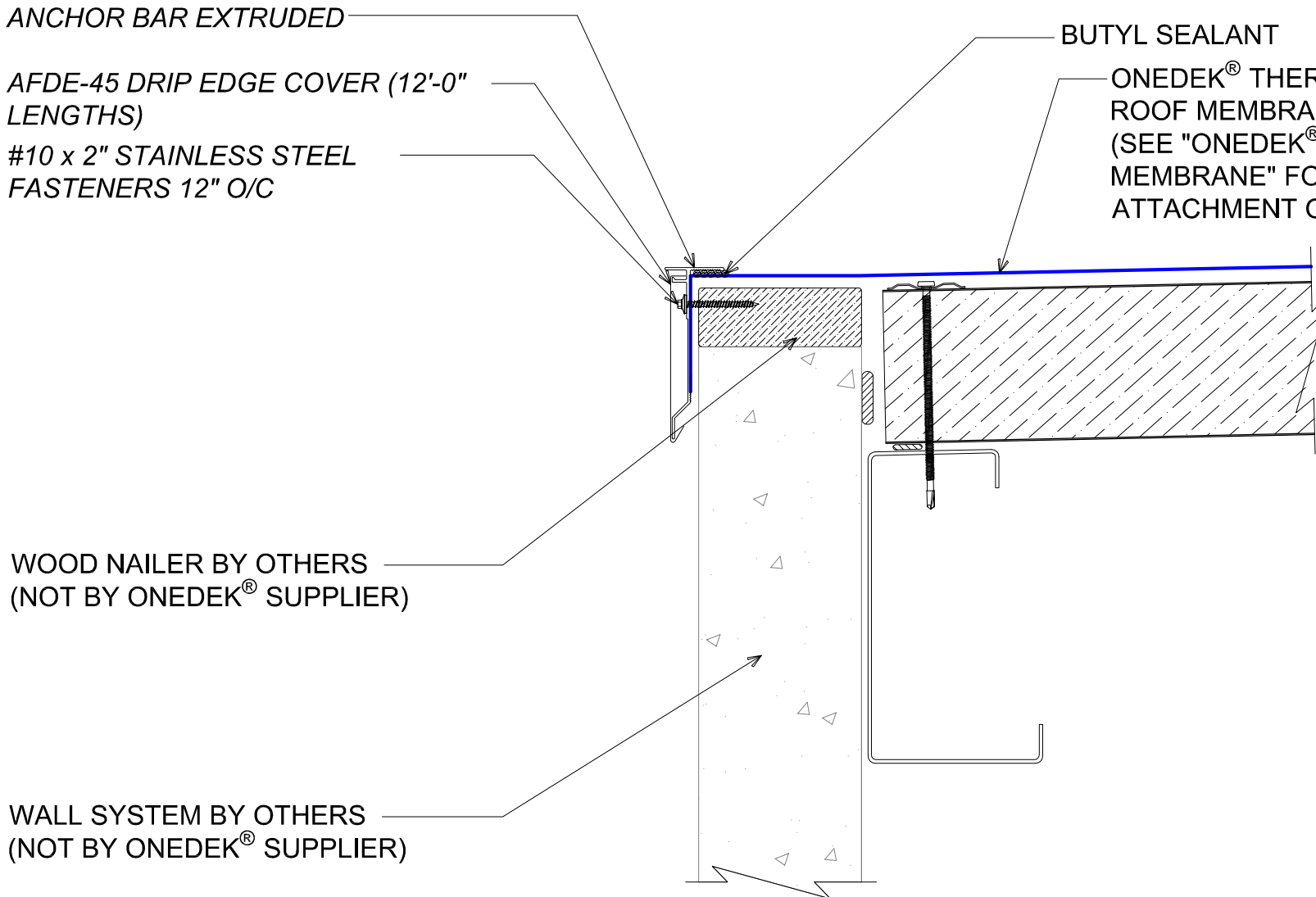
#10 x 2" STAINLESS STEEL
FASTENERS 12" O/C

WOOD NAILER BY OTHERS
(NOT BY ONEDEK® SUPPLIER)

WALL SYSTEM BY OTHERS
(NOT BY ONEDEK® SUPPLIER)

BUTYL SEALANT

ONEDEK® THERMOPLASTIC
ROOF MEMBRANE
(SEE "ONEDEK® ROOFING
MEMBRANE" FOR
ATTACHMENT OPTIONS)



#E DRAINING PERIMETER EDGE METAL (GUTTERLESS EAVE)

(SECTION VIEW)

DETAIL:

DRAINING PERIMETER EDGE (GUTTERLESS EAVE), AFDE-45

DATE:	08/09/22	SHEET:	1
APPLICATION:	RD1 ROOF DECK, COMMERCIAL & INDUSTRIAL, COLD-STORAGE	DRAWN BY:	MMF
AWIP DETAIL NUMBER:	RDR-CICS-WBO-005		OF 1

929 ALDRIDGE ROAD
VACAVILLE, CA 95688
TEL: (707) 359-2280
FAX: (707) 359-2286
WWW.AWIPANELS.COM



ANCHOR BAR EXTRUDED

AFDE-60 DRIP EDGE COVER (12'-0" LENGTHS)

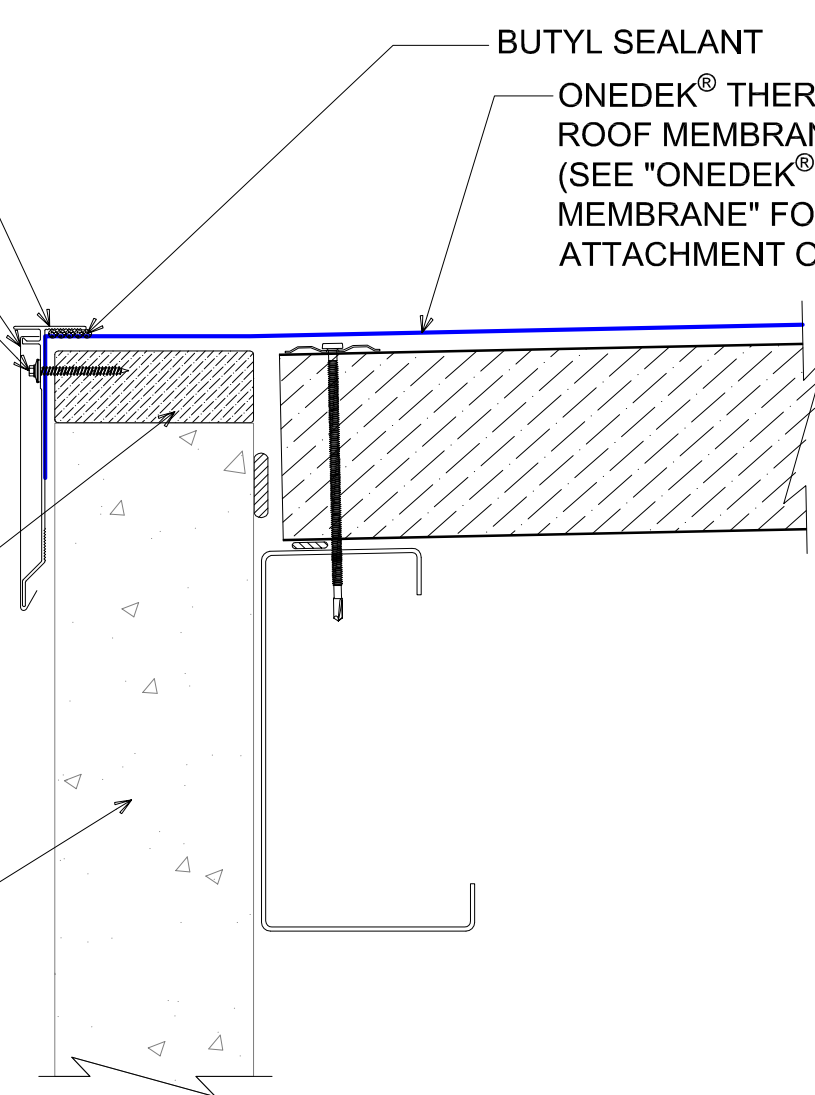
#10 x 2" STAINLESS STEEL FASTENERS 12" O/C

BUTYL SEALANT

ONEDEK® THERMOPLASTIC ROOF MEMBRANE (SEE "ONEDEK® ROOFING MEMBRANE" FOR ATTACHMENT OPTIONS)

WOOD NAILER BY OTHERS (NOT BY ONEDEK® SUPPLIER)

WALL SYSTEM BY OTHERS (NOT BY ONEDEK® SUPPLIER)



#E DRAINING PERIMETER EDGE METAL (GUTTERLESS EAVE)

(SECTION VIEW)

DETAIL: DRAINING PERIMETER EDGE (GUTTERLESS EAVE), AFDE-60	
APPLICATION: RD1 ROOF DECK, COMMERCIAL & INDUSTRIAL, COLD-STORAGE	SHEET: 1 OF 1
DATE: 08/09/22	DRAWN BY: IMF
AWIP DETAIL NUMBER: RDR-CICS-WBO-005	

929 ALDRIDGE ROAD
 VACAVILLE, CA 95688
 TEL: (707) 359-2280
 FAX: (707) 359-2286
 WWW.AWIPANELS.COM



ANCHOR BAR EXTRUDED

AFDE-75 DRIP EDGE COVER (12'-0" LENGTHS)

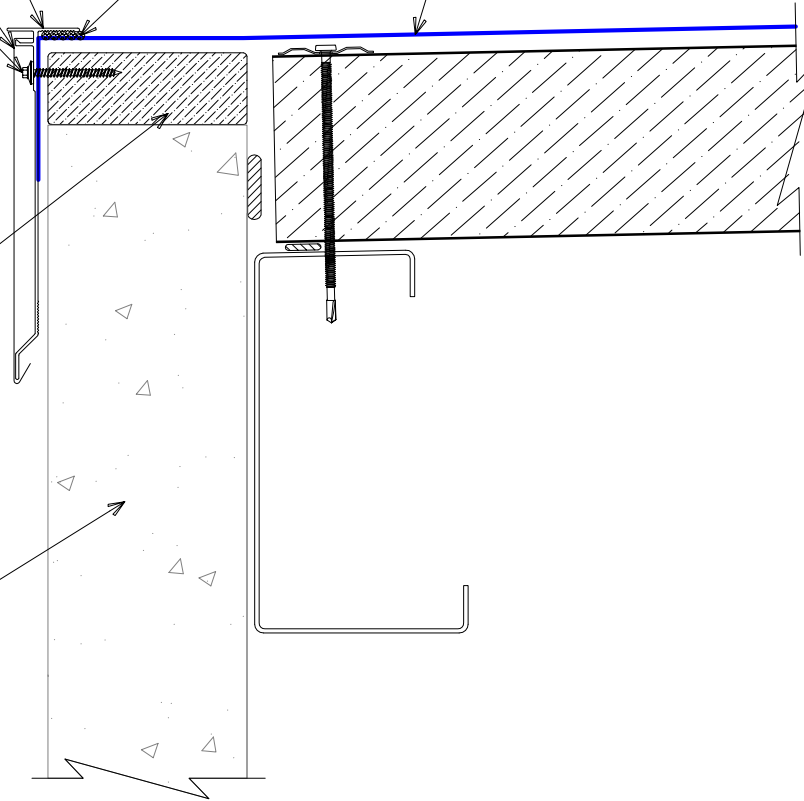
#10 x 2" STAINLESS STEEL FASTENERS 12" O/C

WOOD NAILER BY OTHERS (NOT BY ONEDEK® SUPPLIER)

WALL SYSTEM BY OTHERS (NOT BY ONEDEK® SUPPLIER)

BUTYL SEALANT

ONEDEK® THERMOPLASTIC ROOF MEMBRANE (SEE "ONEDEK® ROOFING MEMBRANE" FOR ATTACHMENT OPTIONS)



#E DRAINING PERIMETER EDGE METAL (GUTTERLESS EAVE)

(SECTION VIEW)

DETAIL:	DRAINING PERIMETER EDGE (GUTTERLESS EAVE), AFDE-75		
APPLICATION:	RD1 ROOF DECK, COMMERCIAL & INDUSTRIAL, COLD-STORAGE	DATE:	08/09/22
AWIP DETAIL NUMBER:	RDR-CICS-WBO-005	DRAWN BY:	MMF
		SHEET:	1 OF 1

929 ALDRIDGE ROAD
VACAVILLE, CA 95688
TEL: (707) 359-2280
FAX: (707) 359-2286
WWW.AWIPANELS.COM



All Weather
Insulated Panels