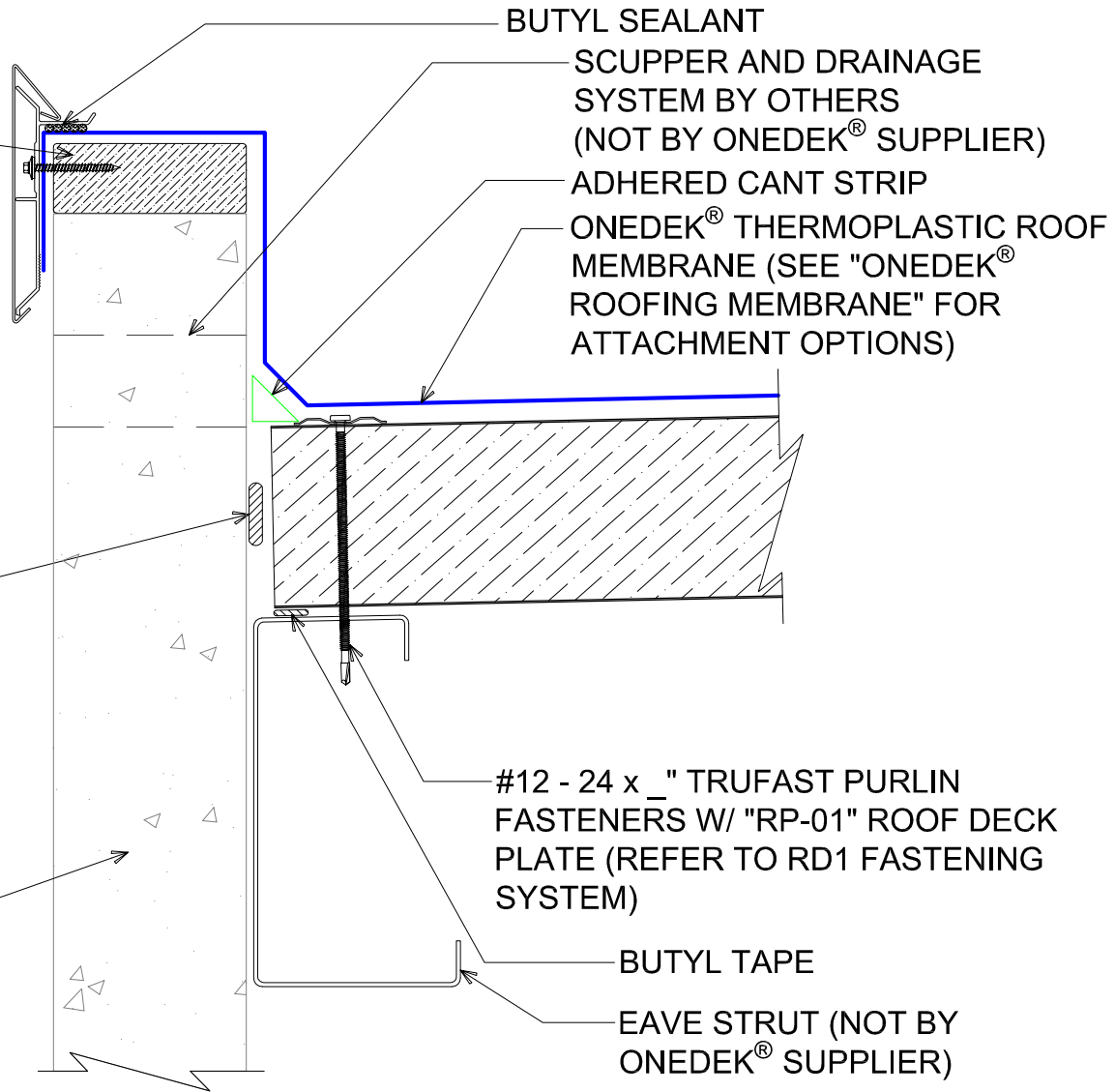


WOOD NAILER BY OTHERS
(NOT BY ONEDEK® SUPPLIER)

NOTE: REFER TO DETAIL _E FOR
EDGE METAL ASSEMBLY
INFORMATION.

FILL VOID WITH ONE-PART
EXPANDING FOAM SEALANT
(NOT BY ONEDEK® SUPPLIER)

WALL SYSTEM BY OTHERS
(NOT BY ONEDEK® SUPPLIER)



PARAPET W/ EDGE METAL (EAVE)

(SECTION VIEW)

DETAIL:

PARAPET W/ EDGE METAL (EAVE)

929 ALDRIDGE ROAD
VACAVILLE, CA 95688
TEL: (707) 359-2280
FAX: (707) 359-2286
WWW.AWIPANELS.COM

All Weather
Insulated Panels



APPLICATION:
RD1 ROOF DECK, COMMERCIAL & INDUSTRIAL, COLD-STORAGE
AWIP DETAIL NUMBER:
RDR-CICS-WBO-007

DATE:
08/09/22

DRAWN BY:
MMF

SHEET:
1 OF 1

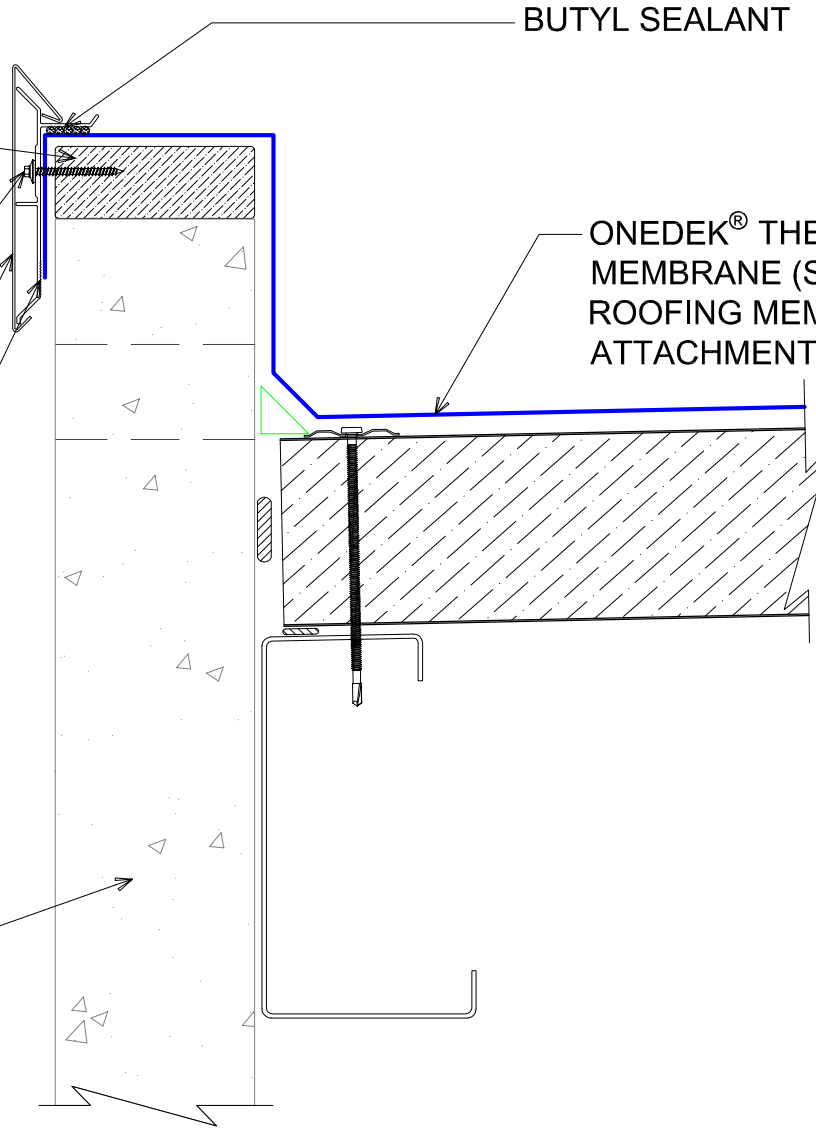
WOOD NAILER BY OTHERS
(NOT BY ONEDEK® SUPPLIER)

#10 x 2" STAINLESS STEEL
FASTENERS 12" O/C

AF-55 FASCIA COVER (12'-0"
LENGTHS)

ANCHOR BAR EXTRUDED

WALL SYSTEM BY OTHERS
(NOT BY ONEDEK® SUPPLIER)



#E PARAPET W/ EDGE METAL (EAVE)

(SECTION VIEW)

DETAIL:

PARAPET W/ EDGE METAL (EAVE), AF-55

APPLICATION:
RD1 ROOF DECK, COMMERCIAL & INDUSTRIAL, COLD-STORAGE
AWIP DETAIL NUMBER:
RDR-CICS-WBO-007

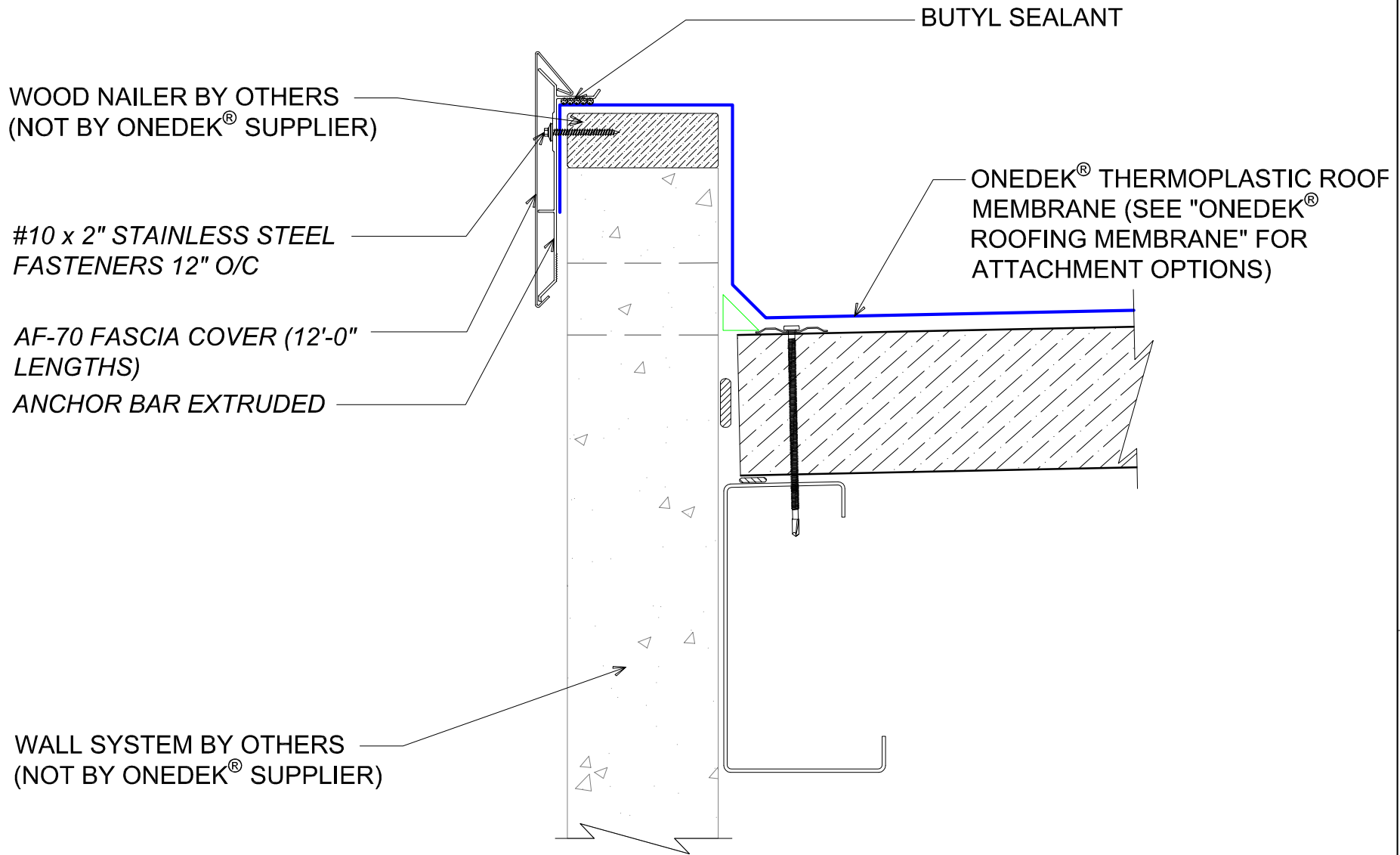
DATE:
08/09/22
DRAWN BY:
MMF

SHEET:
1
OF
1

929 ALDRIDGE ROAD
VACAVILLE, CA 95688
TEL: (707) 359-2280
FAX: (707) 359-2286
WWW.AWIPANELS.COM

All Weather
Insulated Panels





#E PARAPET W/ EDGE METAL (EAVE)

(SECTION VIEW)

DETAIL:
PARAPET W/ EDGE METAL (EAVE), AF-70

929 ALDRIDGE ROAD
VACAVILLE, CA 95688
TEL: (707) 359-2280
FAX: (707) 359-2286
WWW.AWIPANELS.COM

All Weather
Insulated Panels



APPLICATION:
RD1 ROOF DECK, COMMERCIAL & INDUSTRIAL, COLD-STORAGE
AWIP DETAIL NUMBER:
RDR-CICS-WBO-007

DATE:
08/09/22
DRAWN BY:
MMF

SHEET:
1
OF
1