

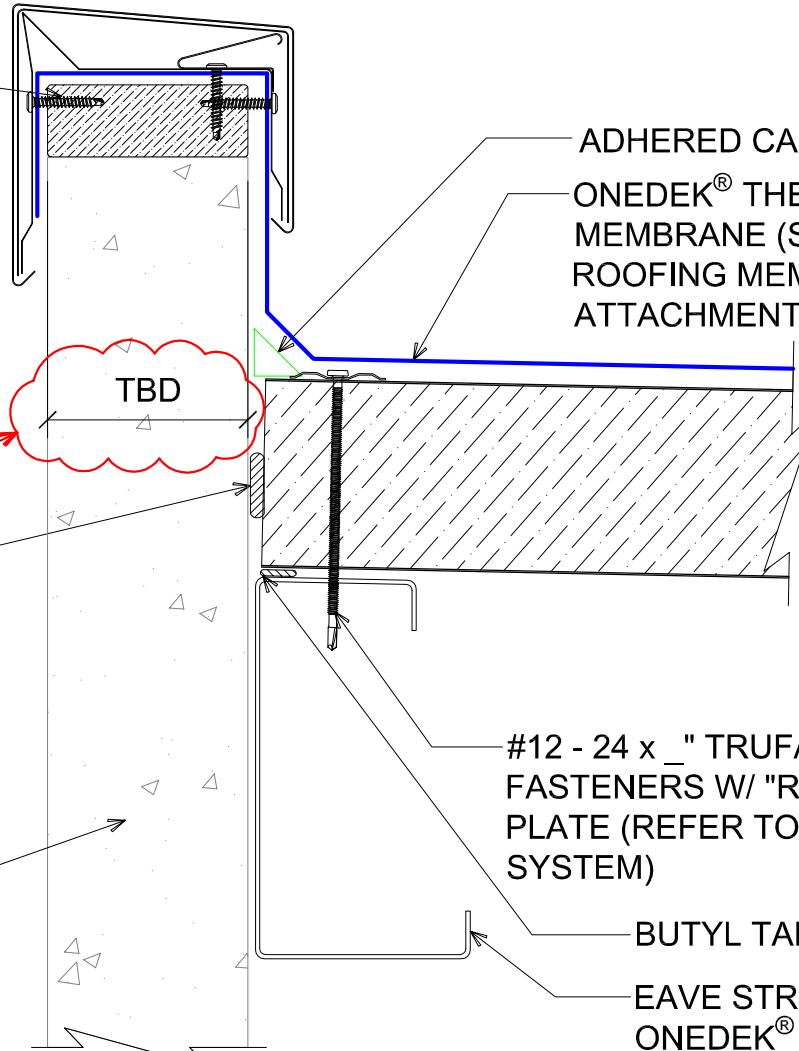
WOOD NAILER BY OTHERS  
(NOT BY ONEDEK® SUPPLIER)

NOTE: REFER TO DETAIL \_E FOR  
EDGE METAL ASSEMBLY  
INFORMATION.

VERIFY

FILL VOID WITH ONE-PART  
EXPANDING FOAM SEALANT  
(NOT BY ONEDEK® SUPPLIER)

WALL SYSTEM BY OTHERS  
(NOT BY ONEDEK® SUPPLIER)



# # BASE FLASHING AT PARAPET W/ METAL COPING (HIGH EAVE)

(SECTION VIEW)

DETAIL:

PARAPET W/ METAL COPING (HIGH EAVE)

929 ALDRIDGE ROAD  
VACAVILLE, CA 95688  
TEL: (707) 359-2280  
FAX: (707) 359-2286  
WWW.AWIPANELS.COM

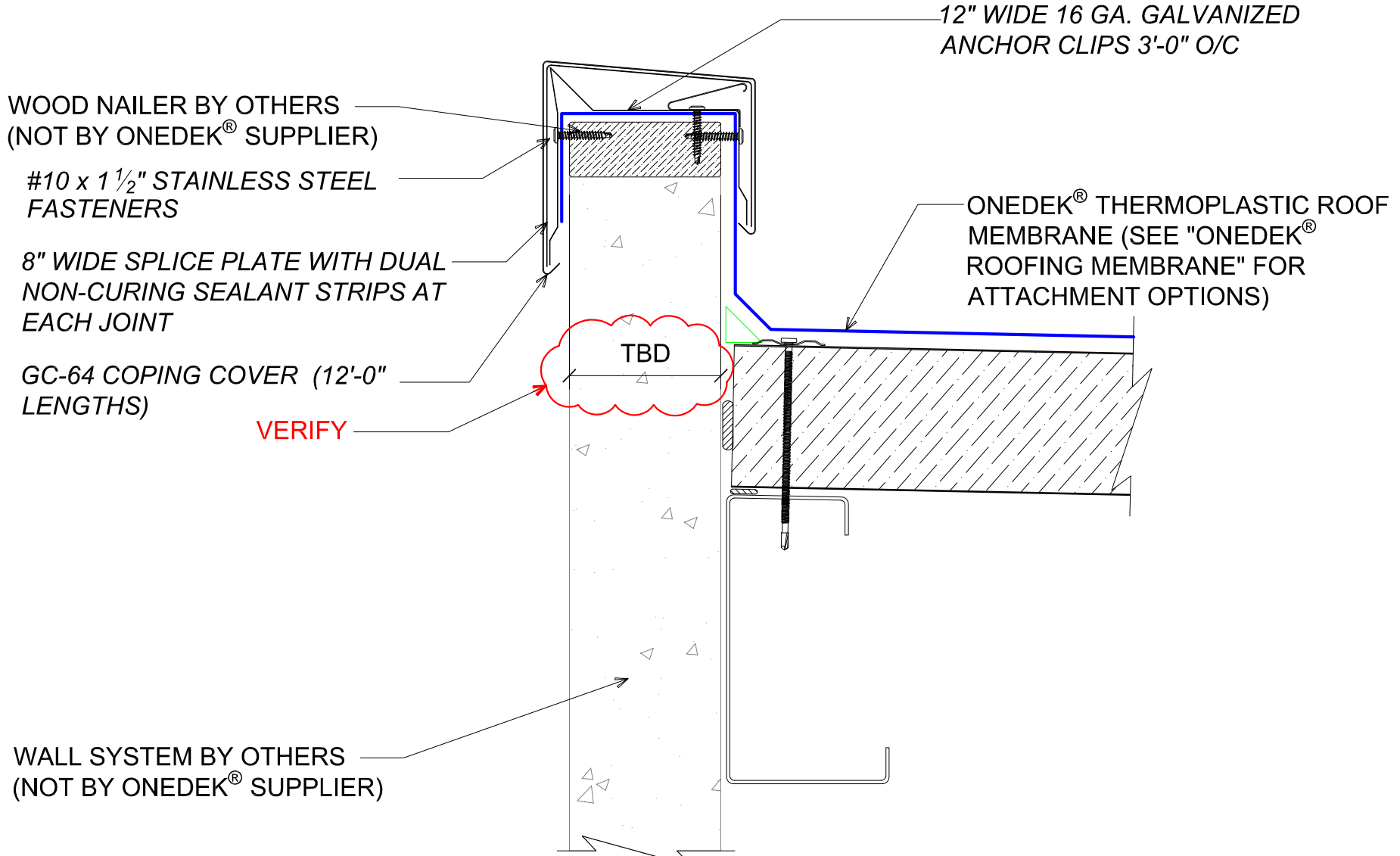
**All Weather**  
Insulated Panels



APPLICATION:  
RD1 ROOF DECK, COMMERCIAL & INDUSTRIAL, COLD-STORAGE  
AWIP DETAIL NUMBER:  
RDR-CICS-WBC-009

DATE:  
08/09/22

SHEET:  
DRAWN BY:  
MMF  
1 OF 1



WOOD NAILER BY OTHERS  
(NOT BY ONEDEK® SUPPLIER)

#10 x 1 1/2" STAINLESS STEEL  
FASTENERS

8" WIDE SPLICE PLATE WITH DUAL  
NON-CURING SEALANT STRIPS AT  
EACH JOINT

GC-64 COPING COVER (12'-0"  
LENGTHS)

VERIFY

TBD

12" WIDE 16 GA. GALVANIZED  
ANCHOR CLIPS 3'-0" O/C

ONEDEK® THERMOPLASTIC ROOF  
MEMBRANE (SEE "ONEDEK®  
ROOFING MEMBRANE" FOR  
ATTACHMENT OPTIONS)

WALL SYSTEM BY OTHERS  
(NOT BY ONEDEK® SUPPLIER)

# #E BASE FLASHING AT PARAPET W/ METAL COPING (HIGH EAVE)

(SECTION VIEW)

DETAIL:

**PARAPET W/ METAL COPING (HIGH EAVE), GC-64**

APPLICATION:  
RD1 ROOF DECK, COMMERCIAL & INDUSTRIAL, COLD-STORAGE  
AWIP DETAIL NUMBER:  
RDR-CICS-WBO-009

DATE:  
08/09/22  
DRAWN BY:  
MMF

SHEET:  
1  
OF  
1

929 ALDRIDGE ROAD  
VACAVILLE, CA 95688  
TEL: (707) 359-2280  
FAX: (707) 359-2286  
WWW.AWIPANELS.COM

**All Weather**  
Insulated Panels

