

WOOD NAILER BY OTHERS
(NOT BY ONEDEK® SUPPLIER)

NOTE: REFER TO DETAIL _E FOR
EDGE METAL ASSEMBLY
INFORMATION.

FILL VOID WITH ONE-PART
EXPANDING FOAM SEALANT
(NOT BY ONEDEK® SUPPLIER)

WALL SYSTEM BY OTHERS
(NOT BY ONEDEK® SUPPLIER)

BUTYL SEALANT

ADHERED CANT STRIP
ONEDEK® THERMOPLASTIC ROOF
MEMBRANE (SEE "ONEDEK®
ROOFING MEMBRANE" FOR
ATTACHMENT OPTIONS)

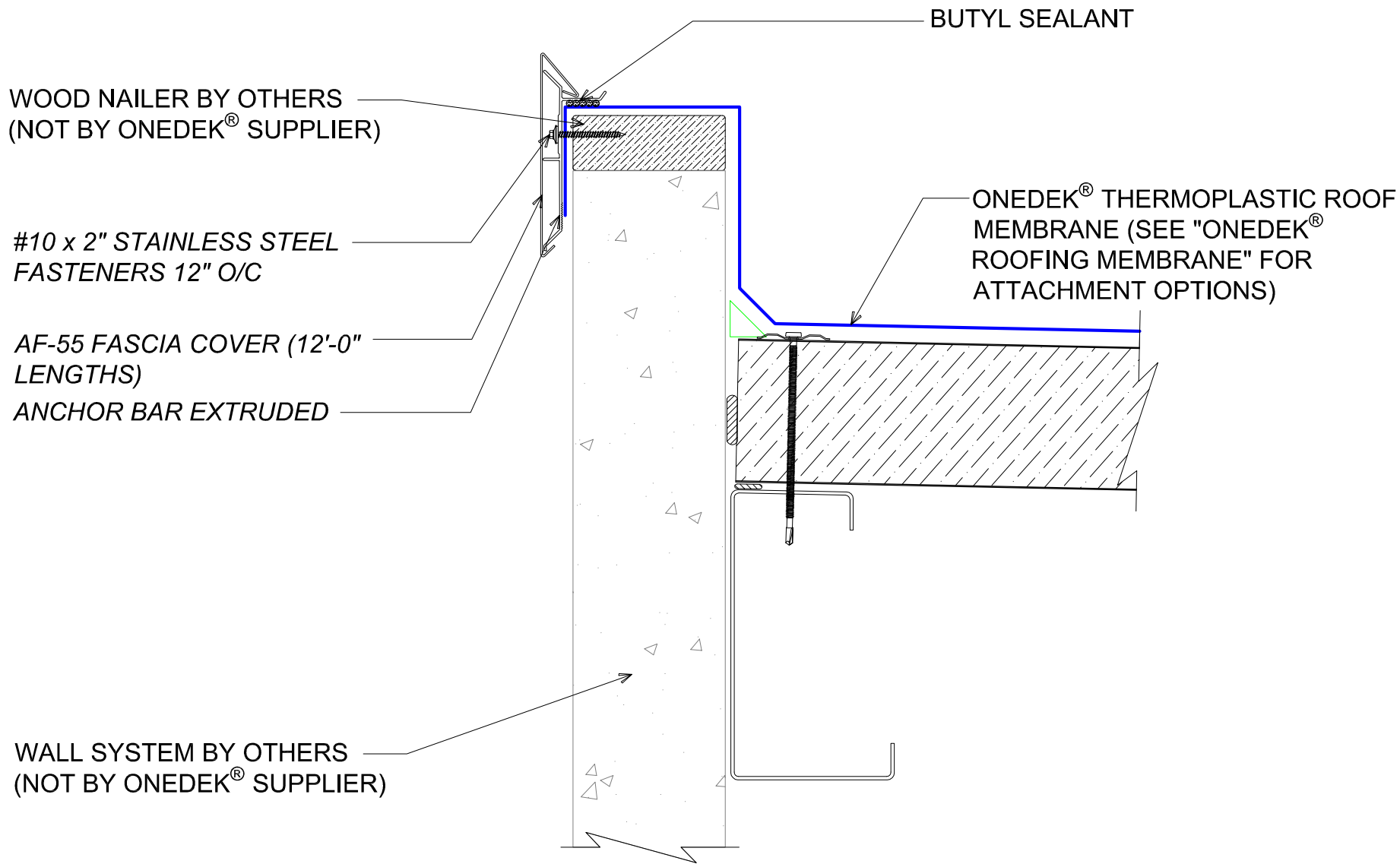
#12 - 24 x _" TRUFAST PURLIN
FASTENERS W/ "RP-01" ROOF DECK
PLATE (REFER TO RD1 FASTENING
SYSTEM)

BUTYL TAPE
EAVE STRUT (NOT BY
ONEDEK® SUPPLIER)

PARAPET W/ EDGE METAL (HIGH EAVE)

(SECTION VIEW)

DETAIL:	PARAPET W/ EDGE METAL (HIGH EAVE)		
	DATE:	08/09/22	SHEET: 1 OF 1
APPLICATION:	RD1 ROOF DECK, COMMERCIAL & INDUSTRIAL, COLD-STORAGE		
AWIP DETAIL NUMBER:	RDR-CICS-WBO-010		
929 ALDRIDGE ROAD VACAVILLE, CA 95688 TEL: (707) 359-2280 FAX: (707) 359-2286 WWW.AWIPANELS.COM			



#E PARAPET W/ EDGE METAL (HIGH EAVE)

(SECTION VIEW)

DETAIL:

PARAPET W/ EDGE METAL (HIGH EAVE), AF-55

APPLICATION:

RD1 ROOF DECK, COMMERCIAL & INDUSTRIAL, COLD-STORAGE

AW/P DETAIL NUMBER:

RDR-CICS-WBO-010

DATE:

08/09/22

DRAWN BY:

MMF

SHEET:

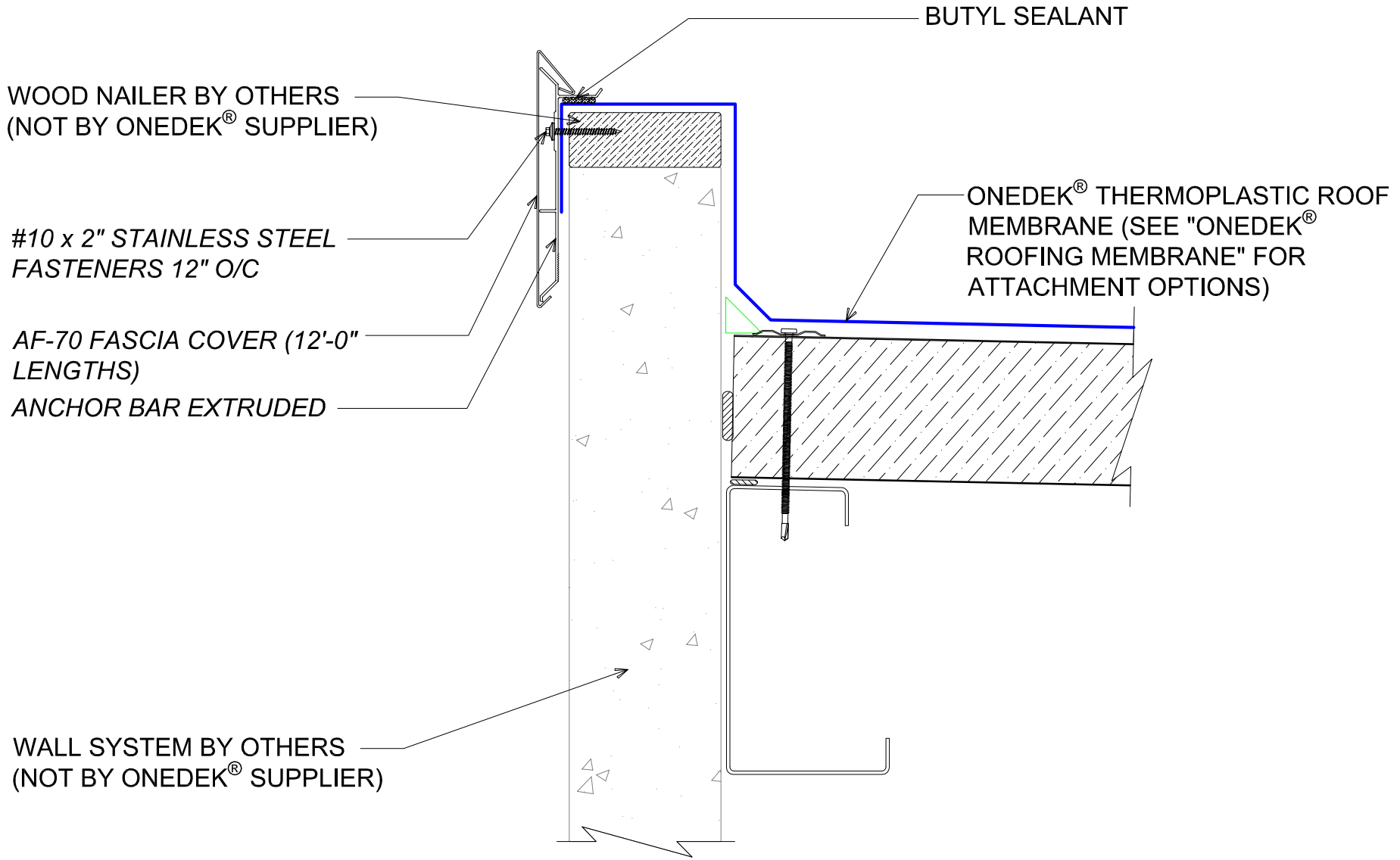
1

OF 1

929 ALDRIDGE ROAD
 VACAVILLE, CA 95688
 TEL: (707) 359-2280
 FAX: (707) 359-2286
 WWW.AWIPANELS.COM

All Weather
 Insulated Panels





#E PARAPET W/ EDGE METAL (HIGH EAVE)

(SECTION VIEW)

DETAIL:

PARAPET W/ EDGE METAL (HIGH EAVE), AF-70

APPLICATION:
RD1 ROOF DECK, COMMERCIAL & INDUSTRIAL, COLD-STORAGE
AW/P DETAIL NUMBER:
RDR-CICS-WBO-010

DATE:
08/09/22

SHEET:
1 OF 1

929 ALDRIDGE ROAD
VACAVILLE, CA 95688
TEL: (707) 359-2280
FAX: (707) 359-2286
WWW.AWIPANELS.COM

All Weather
Insulated Panels

