

NOTE: FIELD-CUT
LONGITUDINAL CEILING
PANELS AS NECESSARY.

NOTE: CONSULT YOUR AWIP
REPRESENTATIVE FOR SPECIFIC
SUPPORT REQUIREMENTS.

FIELD-CUT THERMAL BREAK

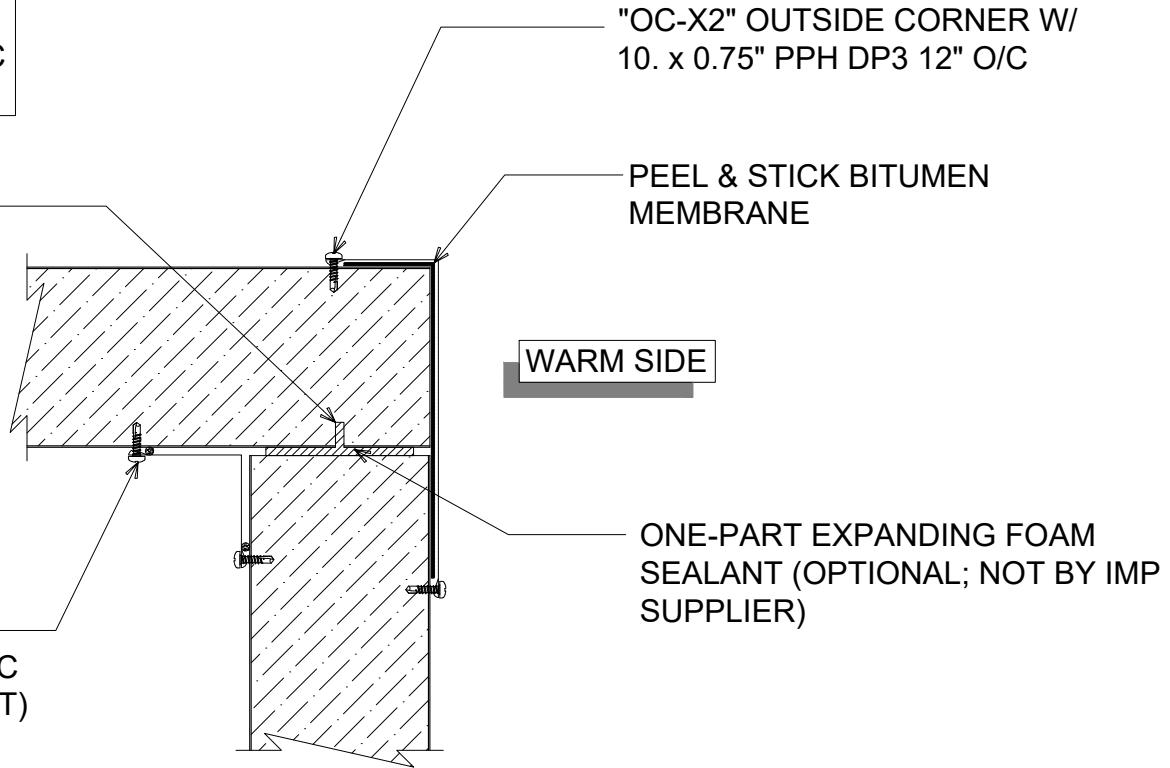
"OC-X2" OUTSIDE CORNER W/
10. x 0.75" PPH DP3 12" O/C

PEEL & STICK BITUMEN
MEMBRANE

WARM SIDE

"IC-01" INSIDE CORNER
W/ 10. x 0.75" PPH DP3 12" O/C
(SET TRIM IN BUTYL SEALANT)

ONE-PART EXPANDING FOAM
SEALANT (OPTIONAL; NOT BY IMP
SUPPLIER)



#

PARTITION TO CEILING (FREEZER)

(SECTION VIEW)

DETAIL:

PARTITION TO CEILING

APPLICATION:
PARTITION WALL, CEILING, FREEZER
AWIP DETAIL NUMBER:
APC-AIF-CT-003

DATE:
10/03/23
DRAWN BY:
MMF

SHEET:

1 OF 1

929 ALDRIDGE ROAD
VACAVILLE, CA 95688
TEL: (707) 359-2280
FAX: (707) 359-2286
WWW.AWIPANELS.COM

All Weather
Insulated Panels

