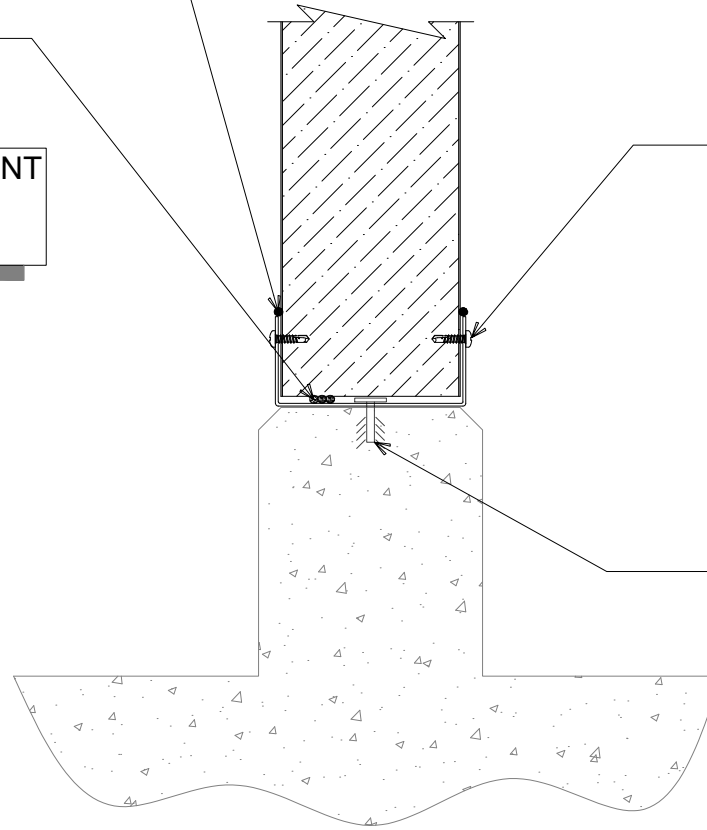
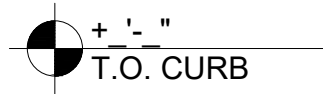


SILICONE SEALANT AFTER  
TEMPERATURE PULL-DOWN  
(OPTIONAL; NOT BY IMP SUPPLIER)

BUTYL SEALANT  
(MARRY TO VERTICAL  
SEALANT)

NOTE: REFER TO PANEL JOINT  
DETAIL(S) FOR VERTICAL  
SEALANT LOCATION(S).



"BC-01" U-CHANNEL W/ 10.  
x 0.75" PPH DP3 12" O/C

CONCRETE ANCHORS  
(NOT BY IMP SUPPLIER)

#

# PARTITION BASE CONDITION - CURB

(SECTION VIEW)

DETAIL:

**BASE CONDITION - CURB**

APPLICATION:

PARTITION WALL, AMBIENT

AWIP DETAIL NUMBER:

APC-AA1-BC-002

DATE:

10/03/23

DRAWN BY:

MMF

SHEET:

1

OF

1

929 ALDRIDGE ROAD  
VACAVILLE, CA 95688  
TEL: (707) 359-2280  
FAX: (707) 359-2286  
WWW.AWIPANELS.COM

