

"BC-03" 20 GA CHANNEL CAP W/ 14.- 13 x 1.5" TRU DP1 12" O/C. W/ BUTYL SEALANT AT FLANGES (MARRY TO VERTICAL SEALANT)

HOT-AIR WELDED __ 45 MIL REINFORCED FLASHING (INQUIRE WITH ONEDEK® REPRESENTATIVE)

ANSI/SPRI GT-1 RATED EDGE METAL ASSEMBLY & GUTTER ASSEMBLY BY OTHERS (NOT BY ONEDEK® SUPPLIER)

ONEDEK® THERMOPLASTIC ROOF MEMBRANE (SEE "ONEDEK® ROOFING MEMBRANE" FOR ATTACHMENT OPTIONS)

3" MIN.

NOTE: GUTTER SYSTEM SHOWN IN DETAIL MAY NOT BE REPRESENTATIVE OF WHAT IS INSTALLED ON SITE. MEMBRANE TERMINATION AND SECUREMENT TO BE DETERMINED BY ROOFING CONTRACTOR.

12. - 24 x __ PNC DP4 W/ "RP-01" ROOF DECK PLATE (REFER TO RD1 FASTENING SYSTEM)

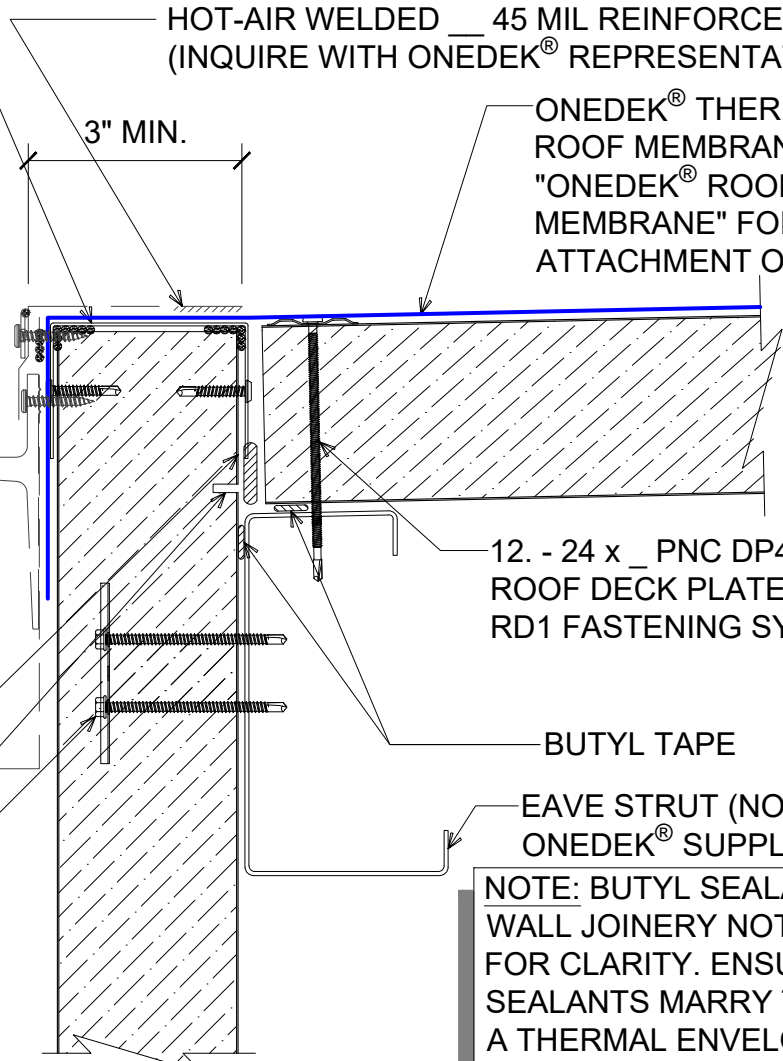
BUTYL TAPE

FILL VOID WITH ONE-PART EXPANDING FOAM SEALANT CONTINUOUS THERMAL CUT FOR COLD STORAGE APPLICATIONS

EAVE STRUT (NOT BY ONEDEK® SUPPLIER)

NOTE: BUTYL SEALANT AT WALL JOINERY NOT SHOWN FOR CLARITY. ENSURE ALL SEALANTS MARRY TO CREATE A THERMAL ENVELOPE.

"WC-01" PANEL CLIP W/ () 1/4 - 14 x __ HWH DP3 W/O WASHER AT PANEL JOINT



GUTTER W/ PERIMETER EDGE METAL (GUTTER BY OTHERS)

(SECTION VIEW)

DETAIL:

GUTTER W/ PERIMETER EDGE METAL (GUTTER BY OTHERS)

APPLICATION: RD1 ROOF DECK, COMMERCIAL & INDUSTRIAL, COLD-STORAGE AWIP DETAIL NUMBER: RDR-CJCS-EG-001	DATE: 11/07/23	SHEET: 1	OF 1
	DRAWN BY: MMF		

929 ALDRIDGE ROAD
VACAVILLE, CA 95688
TEL: (707) 359-2280
FAX: (707) 359-2286
WWW.AWIPANELS.COM

