

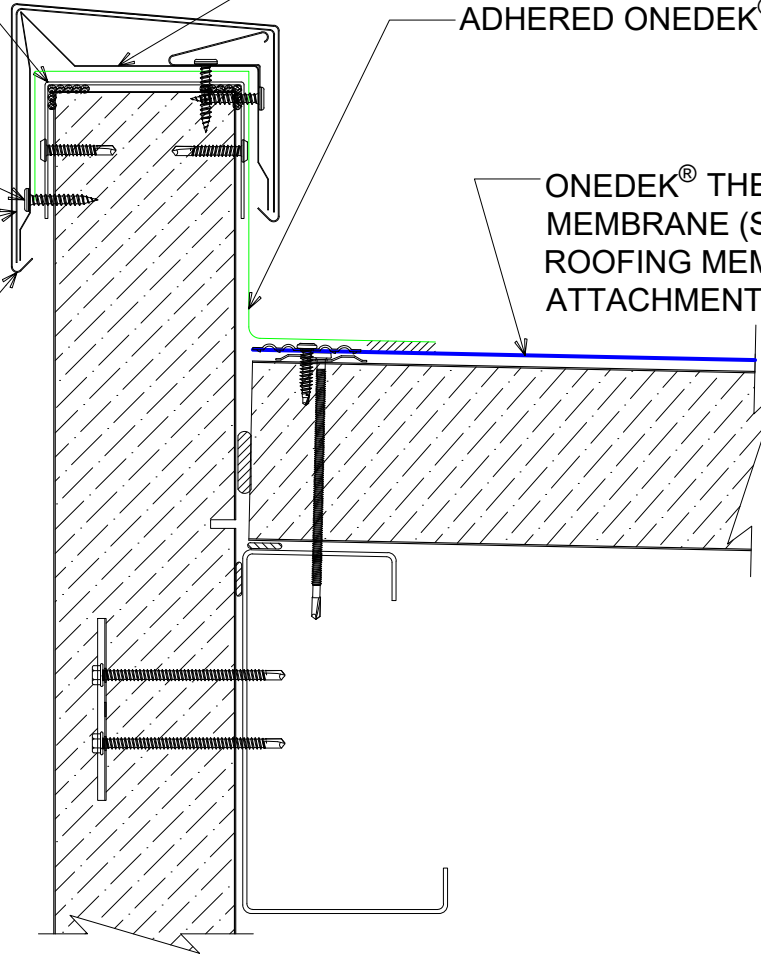
"BC-03" 20 GA CHANNEL CAP W/
14. - 13 x 1.5" TRU DP1 12" O/C. W/
BUTYL SEALANT AT FLANGES
(MARRY TO VERTICAL SEALANT)

#14 x 1 1/2" UNIVERSAL
FASTENERS

8" WIDE CONCEALED SPLICE
PLATE, WITH DUAL NON-CURING
SEALANT STRIPS, AT EACH JOINT
GC-64 COPING COVER (12'-0"
LENGTHS)

12" WIDE 16 GA. GALVANIZED
ANCHOR CLIPS 3'-0" O/C
ADHERED ONEDEK® FLASHING

ONEDEK® THERMOPLASTIC ROOF
MEMBRANE (SEE "ONEDEK®
ROOFING MEMBRANE" FOR
ATTACHMENT OPTIONS)



#E BASE FLASHING AT PARAPET W/ METAL COPING (HIGH EAVE) (SECTION VIEW)

DETAIL:

PARAPET W/ METAL COPING (HIGH EAVE), GC-64

APPLICATION:

RD1 ROOF DECK, COMMERCIAL & INDUSTRIAL, COLD-STORAGE

AWIP DETAIL NUMBER:

RDR-CICS-HEW-001

DATE:

11/07/23

DRAWN BY:

MMF

SHEET:

1

OF 1

929 ALDRIDGE ROAD
VACAVILLE, CA 95688
TEL: (707) 359-2280
FAX: (707) 359-2286
WWW.AWIPANELS.COM

