

6" WIDE CONTINUOUS 5.5 MIL FSK  
FACING TAPE AT END JOINTS

ONEDEK® THERMOPLASTIC  
ROOF MEMBRANE  
(SEE "ONEDEK® ROOFING  
MEMBRANE" FOR ATTACHMENT  
OPTIONS)

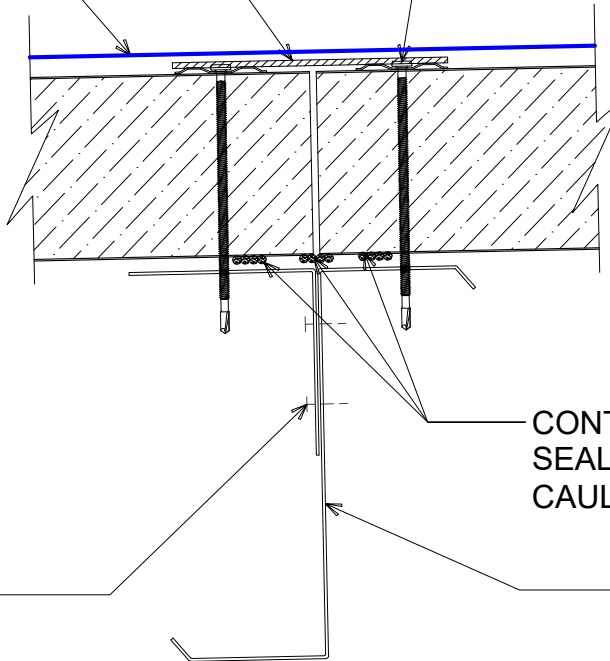
12. - 24 x \_ PNC DP4 W/ "RP-01" ROOF  
DECK PLATE (REFER TO RD1  
FASTENING SYSTEM)

NOTE: ENGINEER OF RECORD TO  
DETERMINE THE REQUIRED  
ATTACHMENT METHOD OF SUPPORT  
ANGLE TO PURLIN AND ENSURE  
CONTINUITY OF SHEAR LOAD  
TRANSFER AT THIS LOCATION.

SUPPORT ANGLE AND  
FASTENERS BY OTHERS  
(NOT BY ONEDEK®  
SUPPLIER)

CONTINUOUS  $\frac{1}{2}$ " Ø BEAD OF BUTYL  
SEALANT (CONNECT ENDS OF  
CAULK BEADS TO CLOSE AND BOX)

SECONDARY FRAMING (NOT  
BY ONEDEK® SUPPLIER)



#

## BUTT JOINT DETAIL - PURLIN

(SECTION VIEW)

DETAIL:

BUTT JOINT - PURLIN

APPLICATION:

RD1 ROOF DECK, COMMERCIAL & INDUSTRIAL, COLD-STORAGE

AWIP DETAIL NUMBER:

RDR-CICS-PT-001

929 ALDRIDGE ROAD  
VACAVILLE, CA 95688  
TEL: (707) 359-2280  
FAX: (707) 359-2286  
WWW.AWIPANELS.COM



SHEET:

1 OF 1

DATE:

12/18/23

DRAWN BY:

MMF