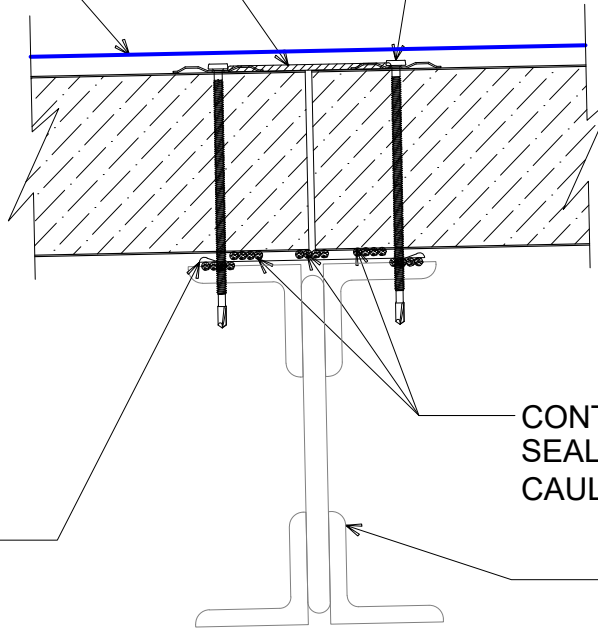


6" WIDE CONTINUOUS 5.5 MIL FSK  
FACING TAPE AT END JOINTS

ONEDEK® THERMOPLASTIC  
ROOF MEMBRANE  
(SEE "ONEDEK® ROOFING  
MEMBRANE" FOR ATTACHMENT  
OPTIONS)

12. - 24 x \_ PNC DP4 W/ "RP-01" ROOF  
DECK PLATE (REFER TO RD1  
FASTENING SYSTEM)



"JC-01" JOINT COVER  
(SET TRIM IN BUTYL SEALANT)

CONTINUOUS 1/2" Ø BEAD OF BUTYL  
SEALANT (CONNECT ENDS OF  
CAULK BEADS TO CLOSE AND BOX)

SECONDARY FRAMING (NOT  
BY ONEDEK® SUPPLIER)

#

## BUTT JOINT DETAIL - JOIST

(SECTION VIEW)

DETAIL:

### BUTT JOINT - JOIST

APPLICATION:

RD1 ROOF DECK, COMMERCIAL & INDUSTRIAL, COLD-STORAGE

AWIP DETAIL NUMBER:

RDR-CICS-PT-003

DATE:

10/02/23

DRAWN BY:

MMF

SHEET:

1

OF 1

929 ALDRIDGE ROAD  
VACAVILLE, CA 95688  
TEL: (707) 359-2280  
FAX: (707) 359-2286  
WWW.AWIPANELS.COM

**All Weather**  
Insulated Panels

