

"BC-02" 20 GA CHANNEL CAP W/  
 #14 - 13 x 1½" TRUSS HEAD TEK  
 FASTENERS 12" O/C. W/ BUTYL  
 SEALANT AT FLANGES (MARRY  
 TO VERTICAL SEALANT)

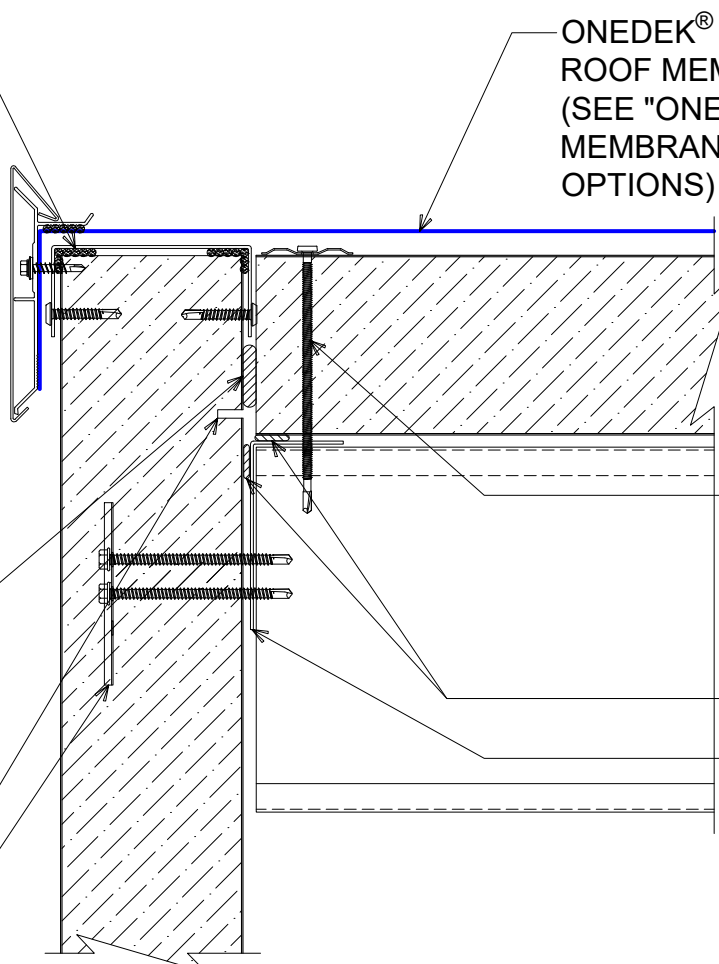
NOTE: BUTYL SEALANT AT WALL  
 JOINERY NOT SHOWN FOR CLARITY.  
 ENSURE ALL SEALANTS MARRY TO  
 CREATE A THERMAL ENVELOPE.

NOTE: REFER TO DETAIL \_E FOR  
 EDGE METAL ASSEMBLY  
 INFORMATION.

FILL VOID WITH ONE-PART  
 EXPANDING FOAM SEALANT

CONTINUOUS THERMAL CUT FOR  
 COLD STORAGE APPLICATIONS

"WC-01" PANEL CLIP W/  
 ( ) ¼ - 14 x \_ TEK 3 FASTENERS  
 W/O WASHER AT PANEL JOINT ¼ - 20 TEK 5



ONEDEK® THERMOPLASTIC  
 ROOF MEMBRANE  
 (SEE "ONEDEK® ROOFING  
 MEMBRANE" FOR ATTACHMENT  
 OPTIONS)

#12 - 24 x \_" TRUFast  
 PURLIN FASTENERS W/  
 "RP-01" ROOF DECK  
 PLATE \_" O/C

BUTYL TAPE

SECONDARY FRAMING  
 & RAKE ANGLE BY  
 OTHERS (NOT BY  
 ONEDEK® SUPPLIER)

# # PERIMETER EDGE METAL (RAKE)

(SECTION VIEW)



DETAIL: **DRAINING PERIMETER EDGE METAL (RAKE)**

929 ALDRIDGE ROAD  
 VACAVILLE, CA 95688  
 TEL: (707) 359-2280  
 FAX: (707) 359-2286  
 WWW.AWIPANELS.COM



APPLICATION: RD1 ROOF DECK, COMMERCIAL & INDUSTRIAL, COLD-STORAGE AWIP DETAIL NUMBER: RDR-CICS-RF-001	DATE: 02/06/23	DRAWN BY: MMF	SHEET: 1 OF 1
--	-------------------	------------------	------------------

"BC-02" 20 GA CHANNEL CAP W/  
#14 - 13 x 1½" TRUSS HEAD TEK  
FASTENERS 12" O/C. W/ BUTYL  
SEALANT AT FLANGES (MARRY  
TO VERTICAL SEALANT)

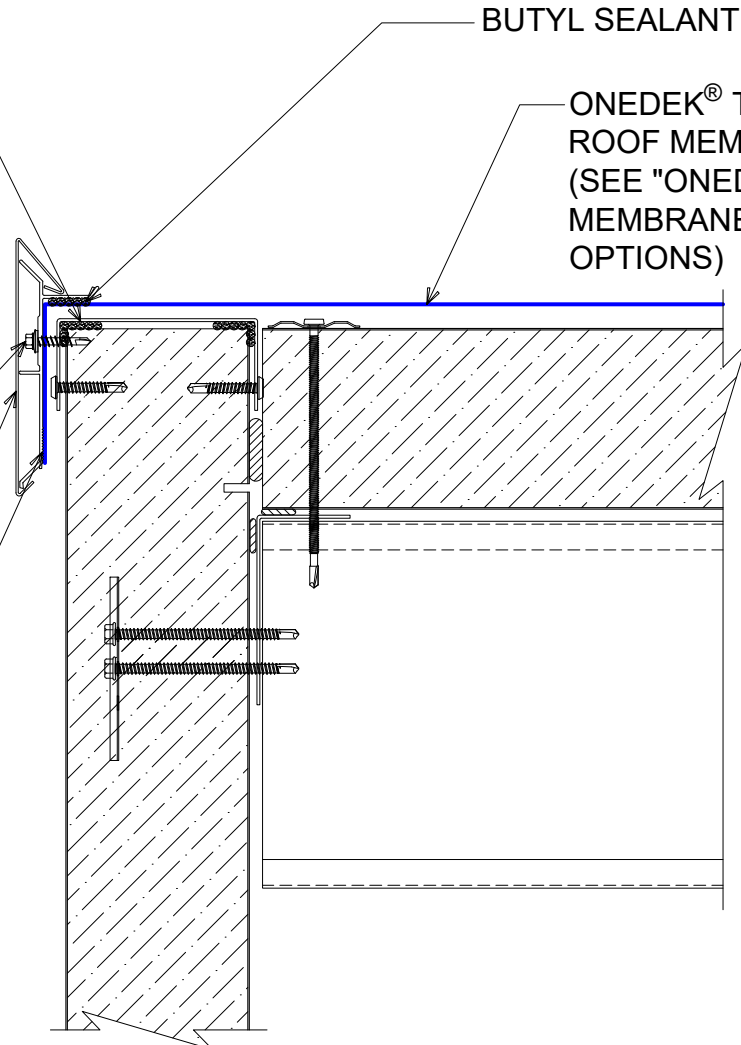
#12-14 x 1¼" HWH/BD TEK 2  
STAINLESS STEEL FASTENERS  
12" O/C

AF-55 FASCIA COVER (12'-0"  
LENGTHS)

ANCHOR BAR EXTRUDED

BUTYL SEALANT

ONEDEK® THERMOPLASTIC  
ROOF MEMBRANE  
(SEE "ONEDEK® ROOFING  
MEMBRANE" FOR ATTACHMENT  
OPTIONS)



# #E PERIMETER EDGE METAL (RAKE)

(SECTION VIEW)

DETAIL:

**DRAINING PERIMETER EDGE METAL (RAKE), AF-55**

APPLICATION:	DATE:	SHEET:
RD1 ROOF DECK, COMMERCIAL & INDUSTRIAL, COLD-STORAGE	02/06/23	1
AWIP DETAIL NUMBER:	DRAWN BY:	OF 1
RDR-CICS-RF-001	MMF	

929 ALDRIDGE ROAD  
VACAVILLE, CA 95688  
TEL: (707) 359-2280  
FAX: (707) 359-2286  
WWW.AWIPANELS.COM




"BC-02" 20 GA CHANNEL CAP W/  
 #14 - 13 x 1½" TRUSS HEAD TEK  
 FASTENERS 12" O/C. W/ BUTYL  
 SEALANT AT FLANGES (MARRY  
 TO VERTICAL SEALANT)

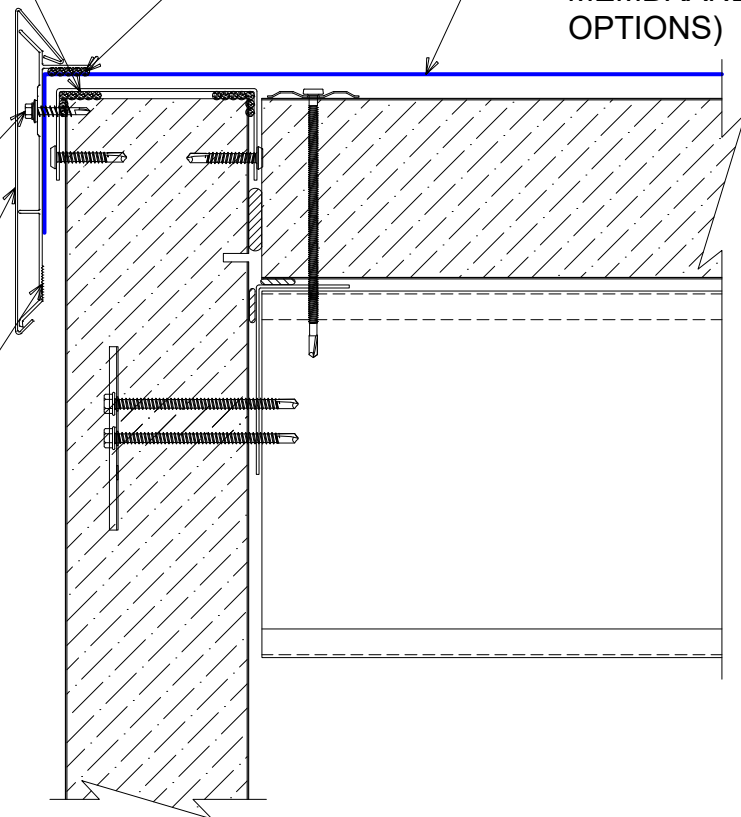
#12-14 x 1¼" HWH/BD TEK 2  
 STAINLESS STEEL FASTENERS  
 12" O/C

AF-70 FASCIA COVER (12'-0"  
 LENGTHS)

ANCHOR BAR EXTRUDED

BUTYL SEALANT

ONEDEK® THERMOPLASTIC  
 ROOF MEMBRANE  
 (SEE "ONEDEK® ROOFING  
 MEMBRANE" FOR ATTACHMENT  
 OPTIONS)



# #E PERIMETER EDGE METAL (RAKE)

(SECTION VIEW)

DETAIL:

**DRAINING PERIMETER EDGE METAL (RAKE), AF-70**

APPLICATION:	DATE:	SHEET:
RD1 ROOF DECK, COMMERCIAL & INDUSTRIAL, COLD-STORAGE	02/06/23	1
AWIP DETAIL NUMBER:	DRAWN BY:	OF 1
RDR-CICS-RF-001	MMF	

929 ALDRIDGE ROAD  
 VACAVILLE, CA 95688  
 TEL: (707) 359-2280  
 FAX: (707) 359-2286  
 WWW.AWIPANELS.COM