

"BC-02" 20 GA CHANNEL CAP W/
 #14 - 13 x 1½" TRUSS HEAD TEK
 FASTENERS 12" O/C. W/ BUTYL
 SEALANT AT FLANGES (MARRY TO
 VERTICAL SEALANT)

#15 - 13 x 1¼" TRUSS HEAD
 FASTENERS W/ "RP-02" BARBED
 MEMBRANE PLATE 6" O/C

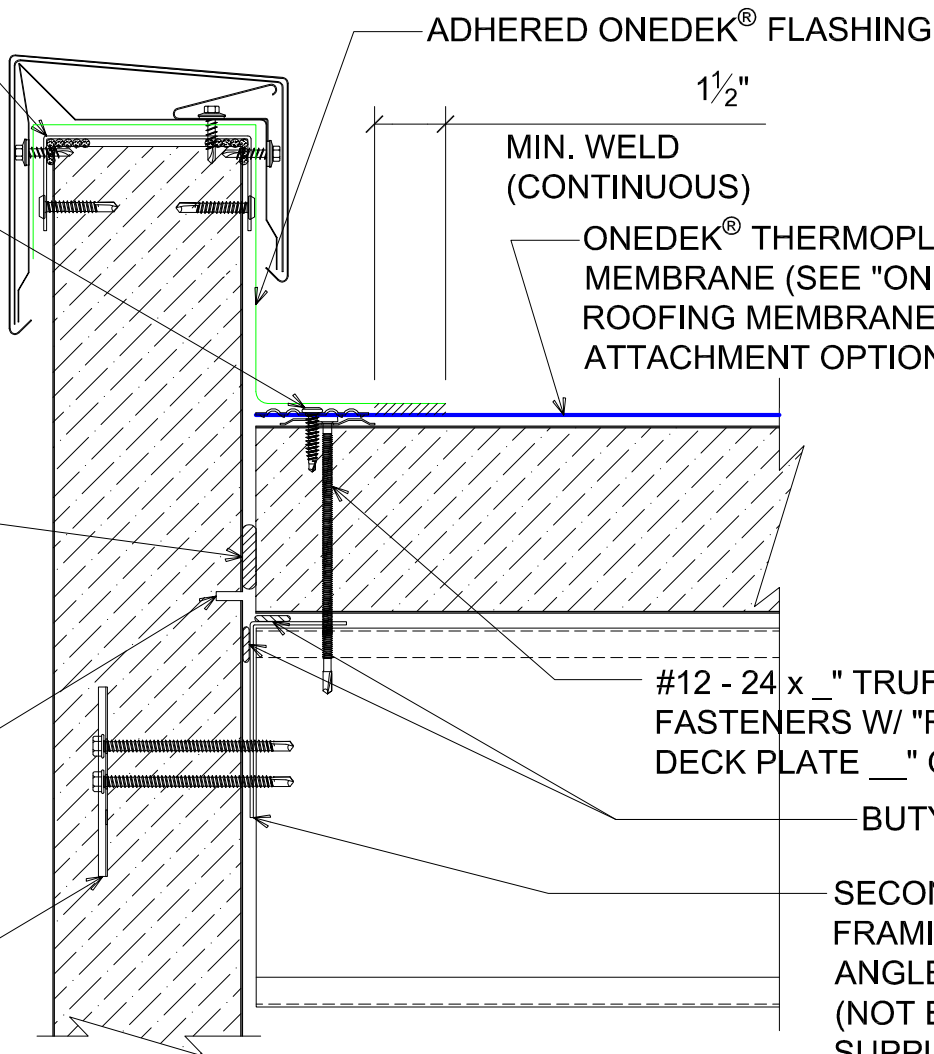
NOTE: REFER TO DETAIL _E FOR
 EDGE METAL ASSEMBLY
 INFORMATION.

FILL VOID WITH ONE-PART
 EXPANDING FOAM SEALANT

NOTE: BUTYL SEALANT AT WALL
 JOINERY NOT SHOWN FOR CLARITY.
 ENSURE ALL SEALANTS MARRY TO
 CREATE A THERMAL ENVELOPE.

CONTINUOUS THERMAL
 CUT FOR COLD STORAGE
 APPLICATIONS

"WC-01" PANEL CLIP W/
 () ¼ - 14 x _ TEK 3 FASTENERS
 W/O WASHER AT PANEL JOINT



MIN. WELD
 (CONTINUOUS)

ONEDEK® THERMOPLASTIC ROOF
 MEMBRANE (SEE "ONEDEK®
 ROOFING MEMBRANE" FOR
 ATTACHMENT OPTIONS)

#12 - 24 x _" TRUFAST PURLIN
 FASTENERS W/ "RP-01" ROOF
 DECK PLATE _" O/C

BUTYL TAPE

SECONDARY
 FRAMING & RAKE
 ANGLE BY OTHERS
 (NOT BY ONEDEK®
 SUPPLIER)

BASE FLASHING AT PARAPET W/ METAL COPING (RAKE)

(SECTION VIEW)

DETAIL:

PARAPET W/ METAL COPING (RAKE)

929 ALDRIDGE ROAD
 VACAVILLE, CA 95688
 TEL: (707) 359-2280
 FAX: (707) 359-2286
 WWW.AWIPANELS.COM

All Weather
 Insulated Panels



APPLICATION:
 RD1 ROOF DECK, COMMERCIAL & INDUSTRIAL, COLD-STORAGE
 AWIP DETAIL NUMBER:
 RDR-CJCS-RW-001

DATE:
 11/07/22
 DRAWN BY:
 MMF

SHEET:
 1
 OF
 1

