

NOTE: REFER TO DETAIL \_E FOR  
EDGE METAL ASSEMBLY  
INFORMATION.

WOOD NAILER BY OTHERS  
(NOT BY ONEDEK® SUPPLIER)

FILL VOID WITH ONE-PART  
EXPANDING FOAM SEALANT

WALL SYSTEM BY OTHERS  
(NOT BY ONEDEK® SUPPLIER)

ONEDEK® THERMOPLASTIC  
ROOF MEMBRANE  
(SEE "ONEDEK® ROOFING  
MEMBRANE" FOR  
ATTACHMENT OPTIONS)

12. - 24 x \_ PNC DP4 W/  
"RP-01" ROOF DECK PLATE  
(REFER TO RD1 FASTENING  
SYSTEM)

BUTYL TAPE

EAVE STRUT (NOT BY  
ONEDEK® SUPPLIER)

# # DRAINING PERIMETER EDGE METAL (GUTTERLESS EAVE) (SECTION VIEW)



DETAIL:

DRAINING PERIMETER EDGE METAL (GUTTERLESS EAVE)

929 ALDRIDGE ROAD  
VACAVILLE, CA 95688  
TEL: (707) 359-2280  
FAX: (707) 359-2286  
WWW.AWIPANELS.COM



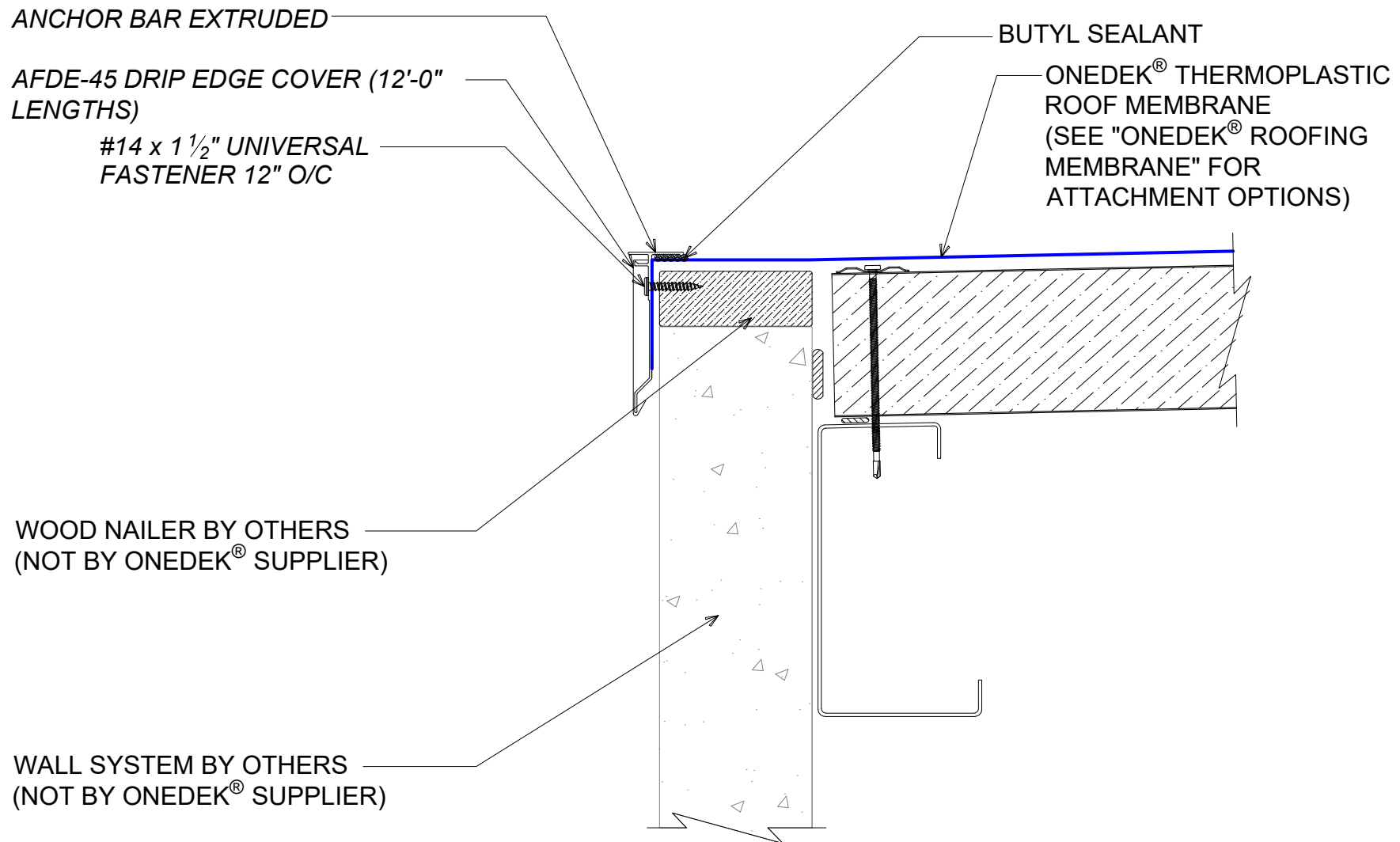
APPLICATION:  
RD1 ROOF DECK, COMMERCIAL & INDUSTRIAL, COLD-STORAGE  
AWIP DETAIL NUMBER:

DATE:  
10/25/23

SHEET:  
1

DRAWN BY:  
MMF

OF  
1



# #E DRAINING PERIMETER EDGE METAL (GUTTERLESS EAVE)

(SECTION VIEW)

DETAIL:

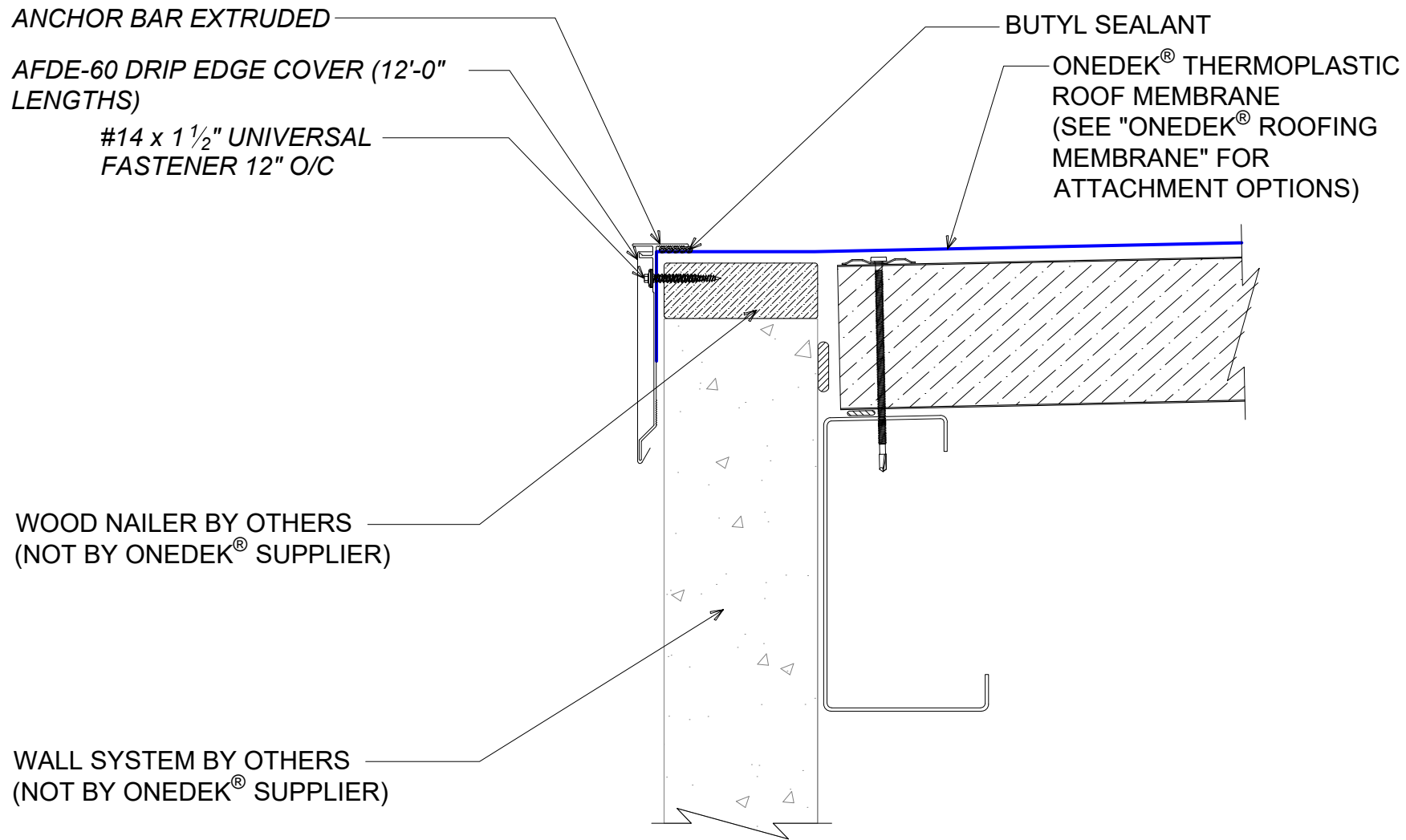
DRAINING PERIMETER EDGE (GUTTERLESS EAVE), AFDE-45

APPLICATION:	DATE:	SHEET:
RD1 ROOF DECK, COMMERCIAL & INDUSTRIAL, COLD-STORAGE	11/06/23	1
AWIP DETAIL NUMBER:	DRAWN BY:	OF 1
RDR-CICS-WBO-005	MMF	

929 ALDRIDGE ROAD  
VACAVILLE, CA 95688  
TEL: (707) 359-2280  
FAX: (707) 359-2286  
WWW.AWIPANELS.COM

**All Weather**  
Insulated Panels





# #E DRAINING PERIMETER EDGE METAL (GUTTERLESS EAVE) (SECTION VIEW)

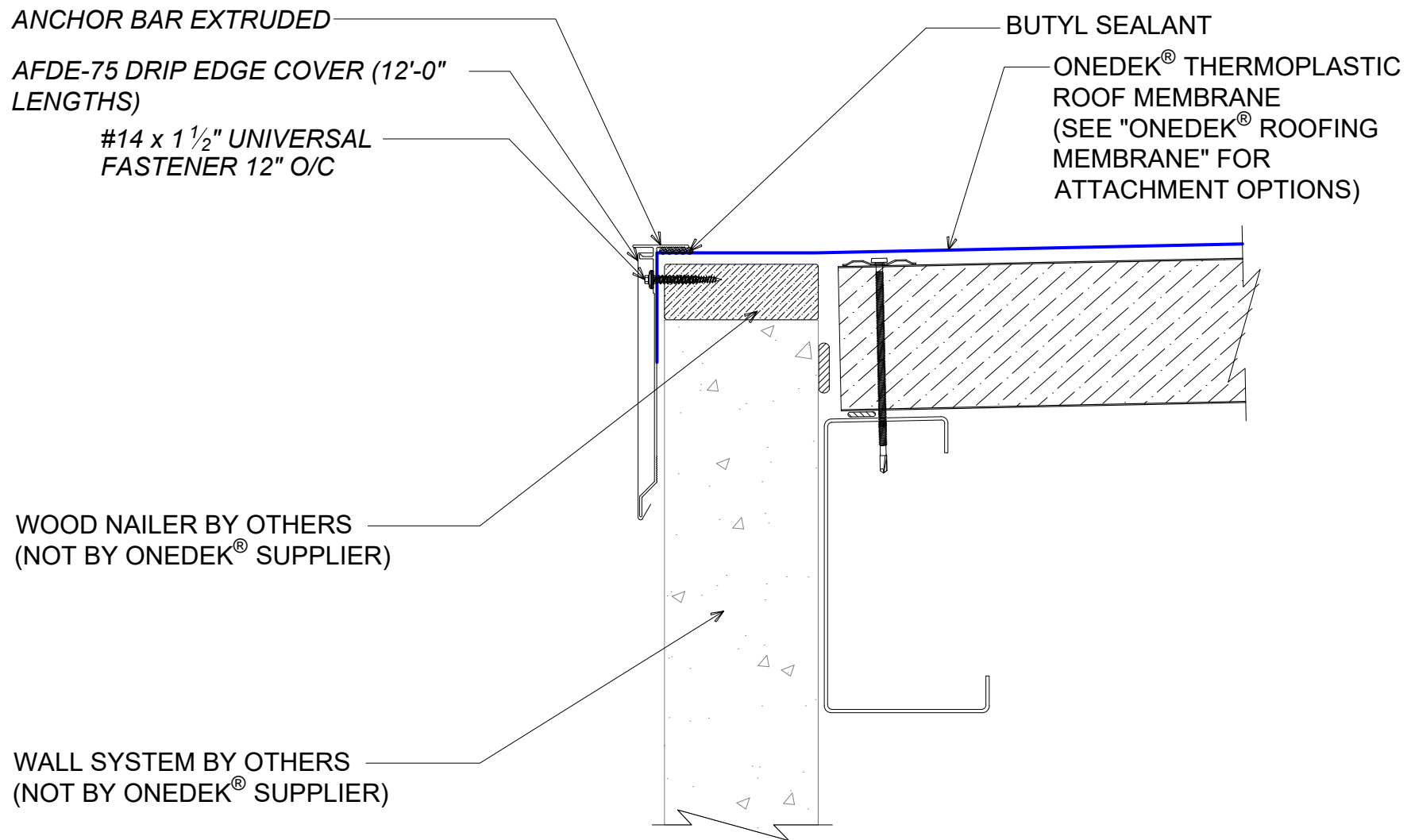
DETAIL:

DRAINING PERIMETER EDGE (GUTTERLESS EAVE), AFDE-60

APPLICATION:	DATE:	SHEET:
RD1 ROOF DECK, COMMERCIAL & INDUSTRIAL, COLD-STORAGE	11/06/23	1
AWIP DETAIL NUMBER:	DRAWN BY:	OF 1
RDR-CICS-WBO-005	MMF	

929 ALDRIDGE ROAD  
VACAVILLE, CA 95688  
TEL: (707) 359-2280  
FAX: (707) 359-2286  
WWW.AWIPANELS.COM





# #E DRAINING PERIMETER EDGE METAL (GUTTERLESS EAVE) (SECTION VIEW)

DETAIL:

DRAINING PERIMETER EDGE (GUTTERLESS EAVE), AFDE-75

APPLICATION:	DATE:	SHEET:
RD1 ROOF DECK, COMMERCIAL & INDUSTRIAL, COLD-STORAGE	11/06/23	1
AWIP DETAIL NUMBER:	DRAWN BY:	OF 1
RDR-CICS-WBO-005	MMF	

929 ALDRIDGE ROAD  
VACAVILLE, CA 95688  
TEL: (707) 359-2280  
FAX: (707) 359-2286  
WWW.AWIPANELS.COM

**All Weather**  
Insulated Panels

