

WOOD NAILER BY OTHERS
(NOT BY ONEDEK® SUPPLIER)

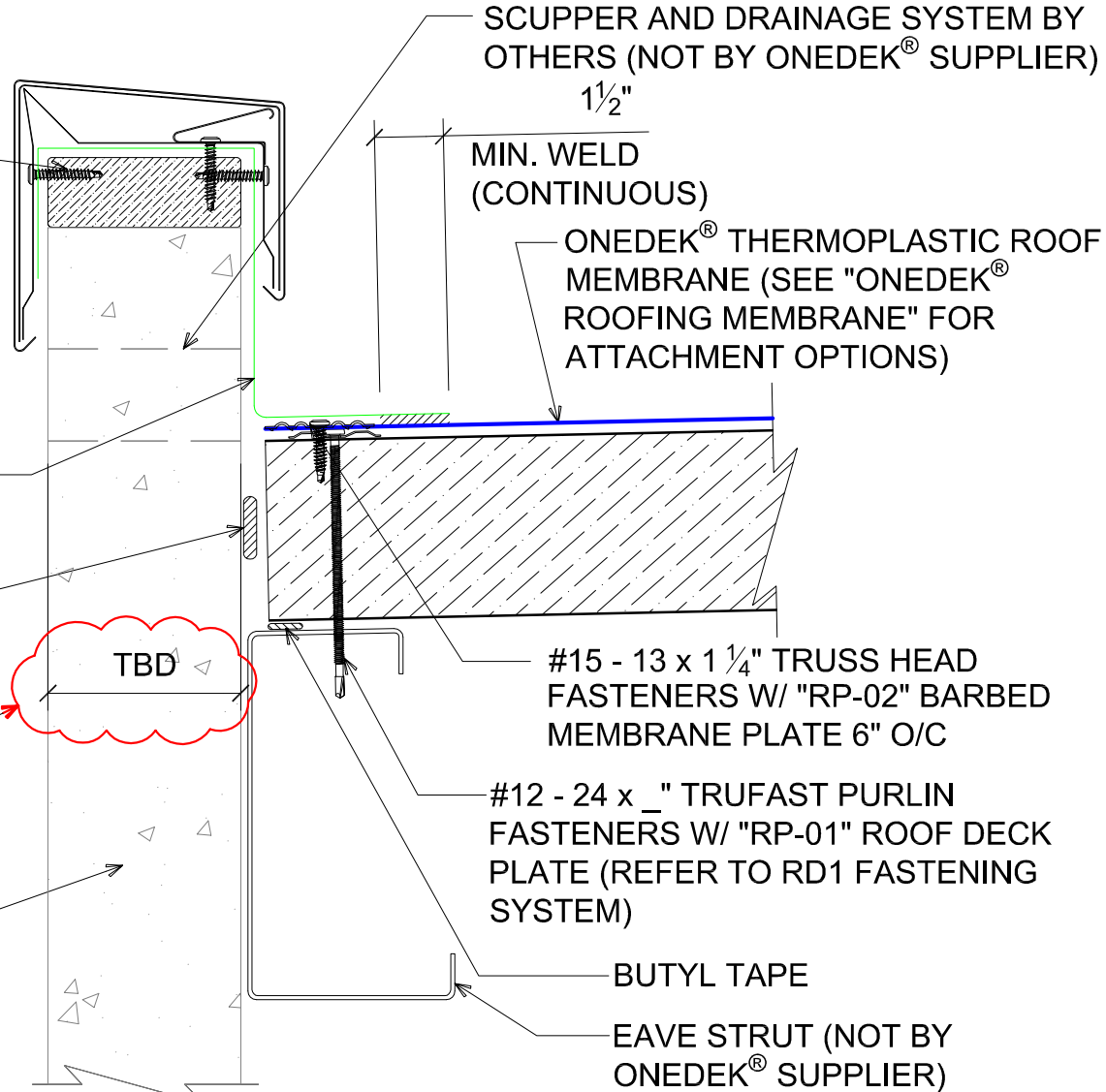
NOTE: REFER TO DETAIL _E FOR
EDGE METAL ASSEMBLY
INFORMATION.

ADHERED ONEDEK® FLASHING

FILL VOID WITH ONE-PART
EXPANDING FOAM SEALANT
(NOT BY ONEDEK® SUPPLIER)

VERIFY

WALL SYSTEM BY OTHERS
(NOT BY ONEDEK® SUPPLIER)



BASE FLASHING AT PARAPET W/ METAL COPING (EAVE)

(SECTION VIEW)

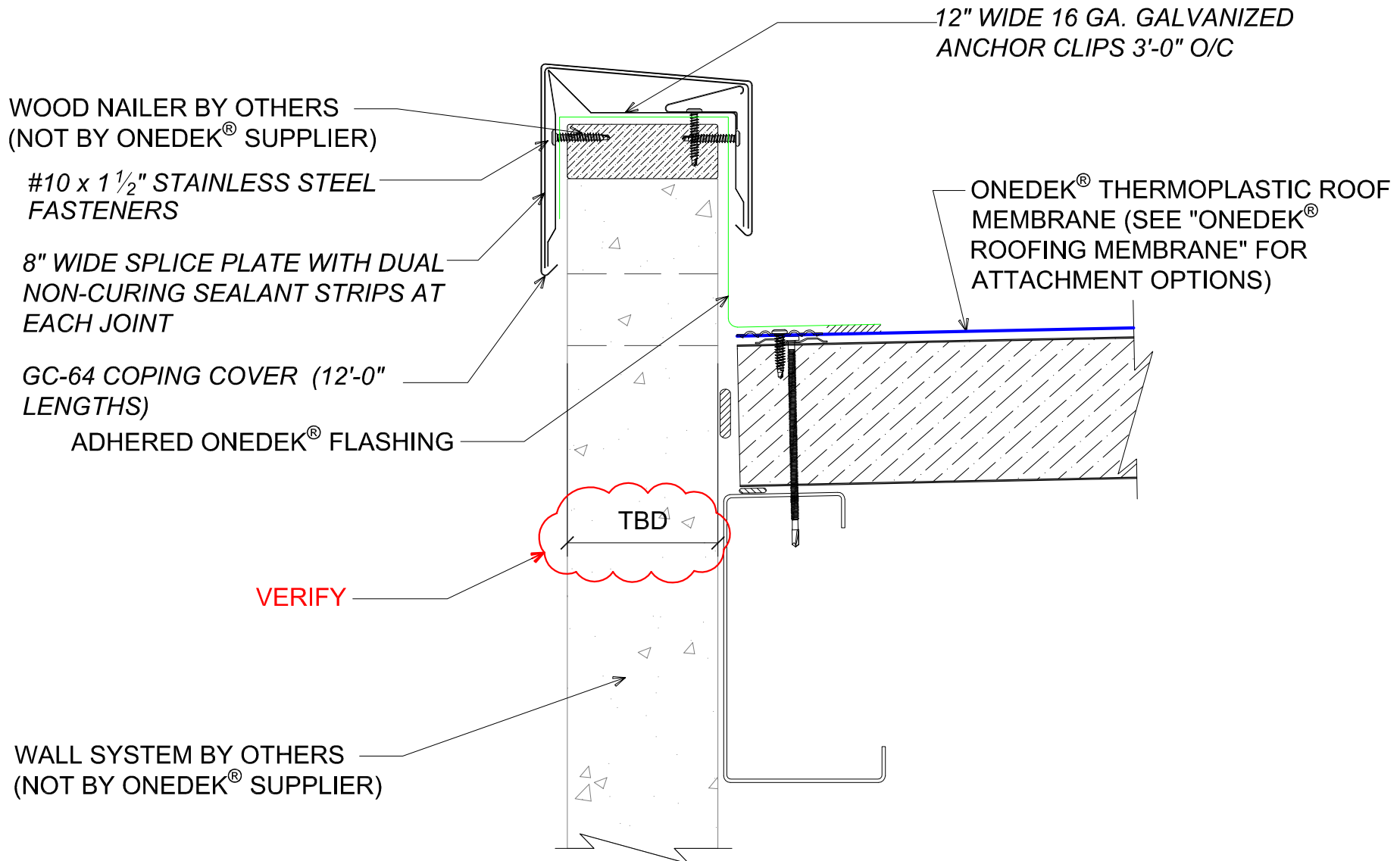
DETAIL: PARAPET W/ METAL COPING (EAVE)

929 ALDRIDGE ROAD
VACAVILLE, CA 95688
TEL: (707) 359-2280
FAX: (707) 359-2286
WWW.AWIPANELS.COM

All Weather
Insulated Panels



DATE:	11/07/22	SHEET:	1
APPLICATION:	RD1 ROOF DECK, COMMERCIAL & INDUSTRIAL, COLD-STORAGE	DRAWN BY:	MMF
AWIP DETAIL NUMBER:	RDR-CICS-WBO-006	OF	1



#E BASE FLASHING AT PARAPET W/ METAL COPING (EAVE)

(SECTION VIEW)

DETAIL:

PARAPET W/ METAL COPING (EAVE), GC-64

APPLICATION:
RD1 ROOF DECK, COMMERCIAL & INDUSTRIAL, COLD-STORAGE
AWIP DETAIL NUMBER:
RDR-CICS-WBO-006

DATE:
11/07/22

DRAWN BY:
MMF

SHEET:
1 OF 1

929 ALDRIDGE ROAD
VACAVILLE, CA 95688
TEL: (707) 359-2280
FAX: (707) 359-2286
WWW.AWIPANELS.COM

