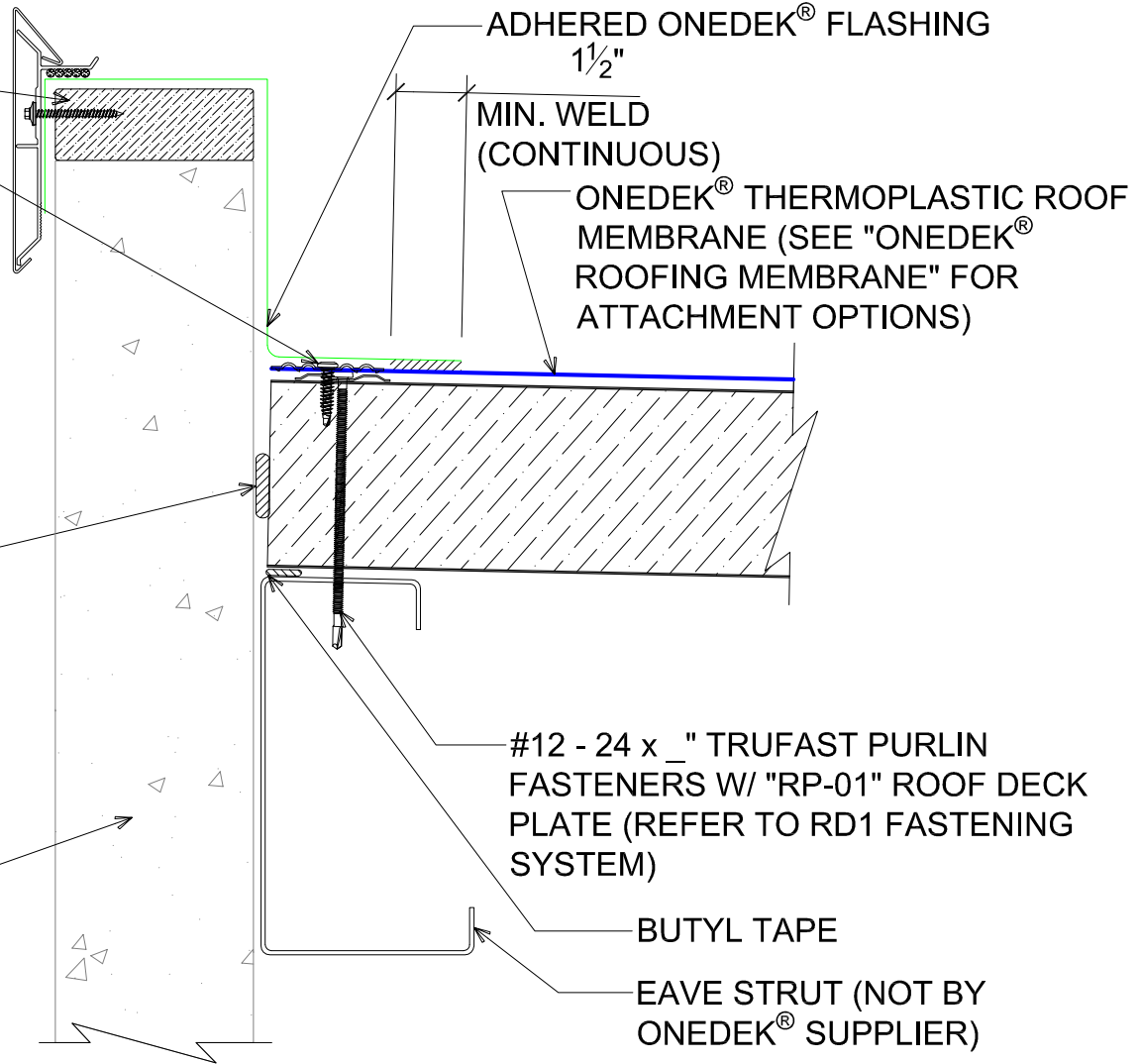


WOOD NAILER BY OTHERS  
(NOT BY ONEDEK® SUPPLIER)  
#15 - 13 x 1 1/4" TRUSS HEAD  
FASTENERS W/ "RP-02" BARBED  
MEMBRANE PLATE 6" O/C

NOTE: REFER TO DETAIL \_E FOR  
EDGE METAL ASSEMBLY  
INFORMATION.

FILL VOID WITH ONE-PART  
EXPANDING FOAM SEALANT  
(NOT BY ONEDEK® SUPPLIER)

WALL SYSTEM BY OTHERS  
(NOT BY ONEDEK® SUPPLIER)



# # PARAPET W/ EDGE METAL (HIGH EAVE)

(SECTION VIEW)

DETAIL: **PARAPET W/ EDGE METAL (HIGH EAVE)**

929 ALDRIDGE ROAD  
VACAVILLE, CA 95688  
TEL: (707) 359-2280  
FAX: (707) 359-2286  
WWW.AWIPANELS.COM

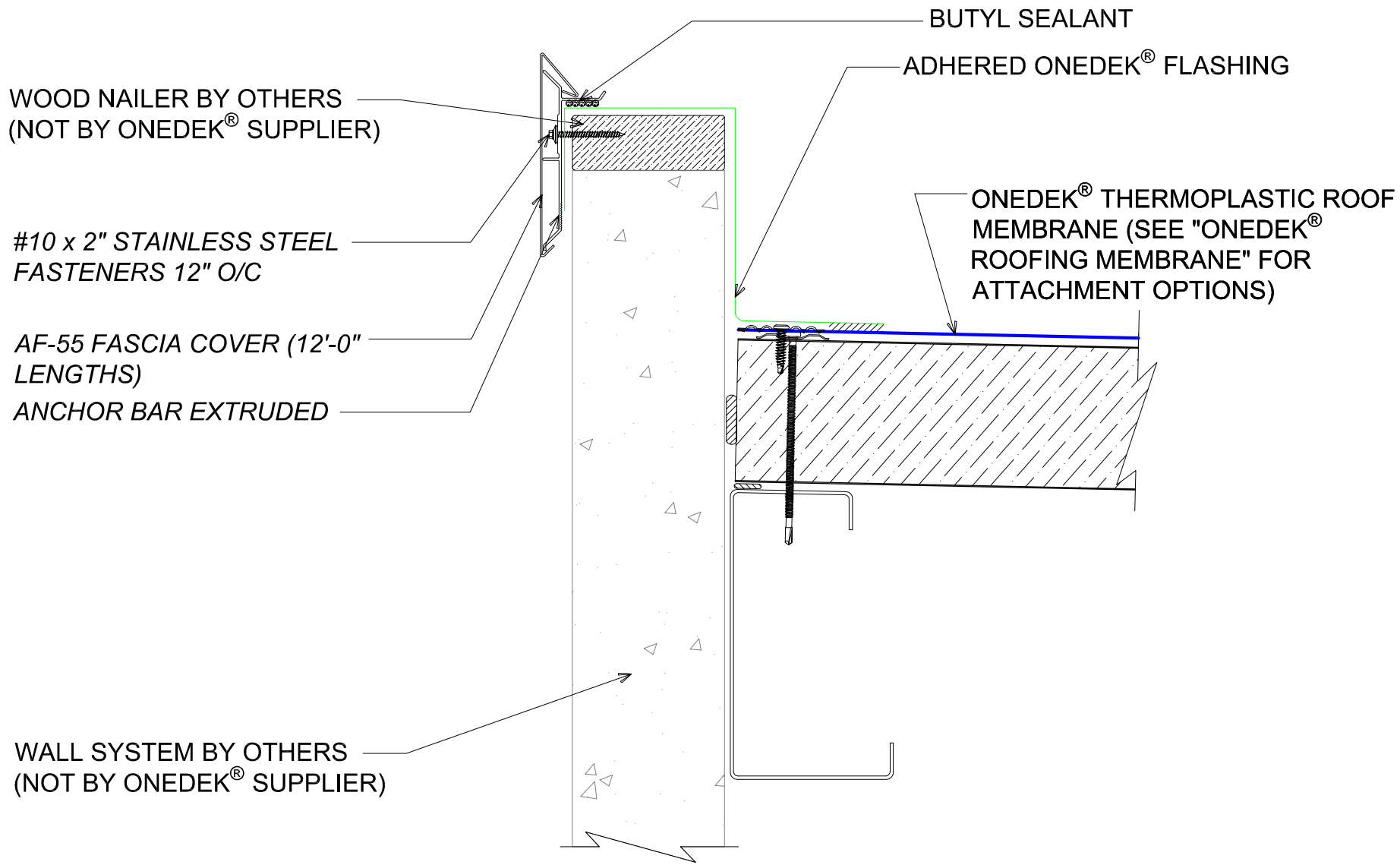
**All Weather**  
Insulated Panels



APPLICATION:  
RD1 ROOF DECK, COMMERCIAL & INDUSTRIAL, COLD-STORAGE  
AWIP DETAIL NUMBER:  
RDR-CICS-WBO-010

DATE: 11/07/22  
DRAWN BY: MMF

SHEET: 1 OF 1



# #E PARAPET W/ EDGE METAL (HIGH EAVE)

(SECTION VIEW)

DETAIL:

**PARAPET W/ EDGE METAL (HIGH EAVE), AF-55**

APPLICATION:  
RD1 ROOF DECK, COMMERCIAL & INDUSTRIAL, COLD-STORAGE  
AW/P DETAIL NUMBER:  
RDR-CICS-WBO-010

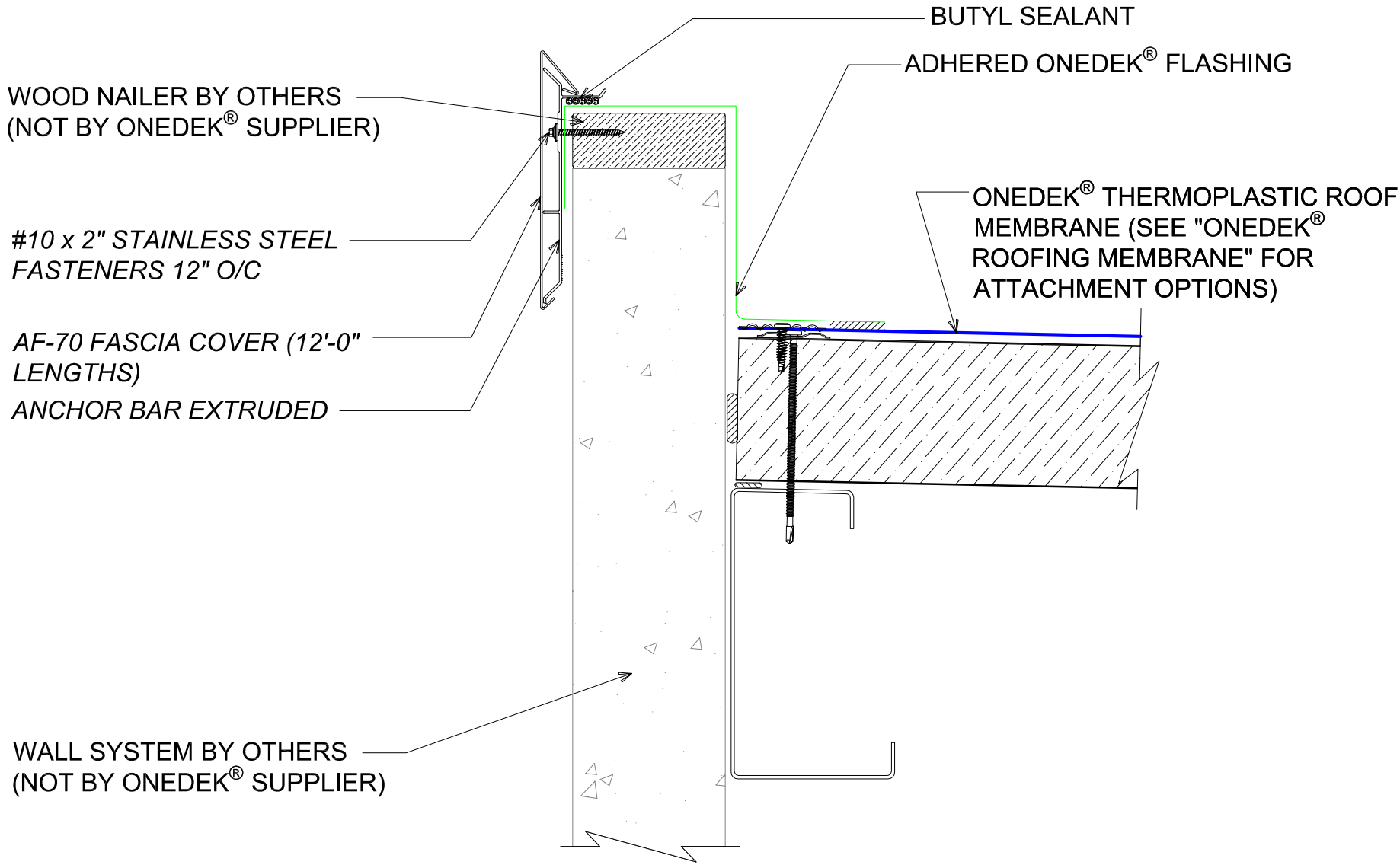
DATE: 11/07/22  
DRAWN BY: IMF

SHEET:  
**1**  
OF  
**1**

929 ALDRIDGE ROAD  
VACAVILLE, CA 95688  
TEL: (707) 359-2280  
FAX: (707) 359-2286  
WWW.AWIPANELS.COM

**All Weather**  
Insulated Panels





# #E PARAPET W/ EDGE METAL (HIGH EAVE)

(SECTION VIEW)

DETAIL:

## PARAPET W/ EDGE METAL (HIGH EAVE), AF-70

APPLICATION:	DATE:	SHEET:
RD1 ROOF DECK, COMMERCIAL & INDUSTRIAL, COLD-STORAGE	11/07/22	1
AW/P DETAIL NUMBER:	DRAWN BY:	OF 1
RDR-CICS-WBO-010	MMF	

929 ALDRIDGE ROAD  
VACAVILLE, CA 95688  
TEL: (707) 359-2280  
FAX: (707) 359-2286  
WWW.AWIPANELS.COM

