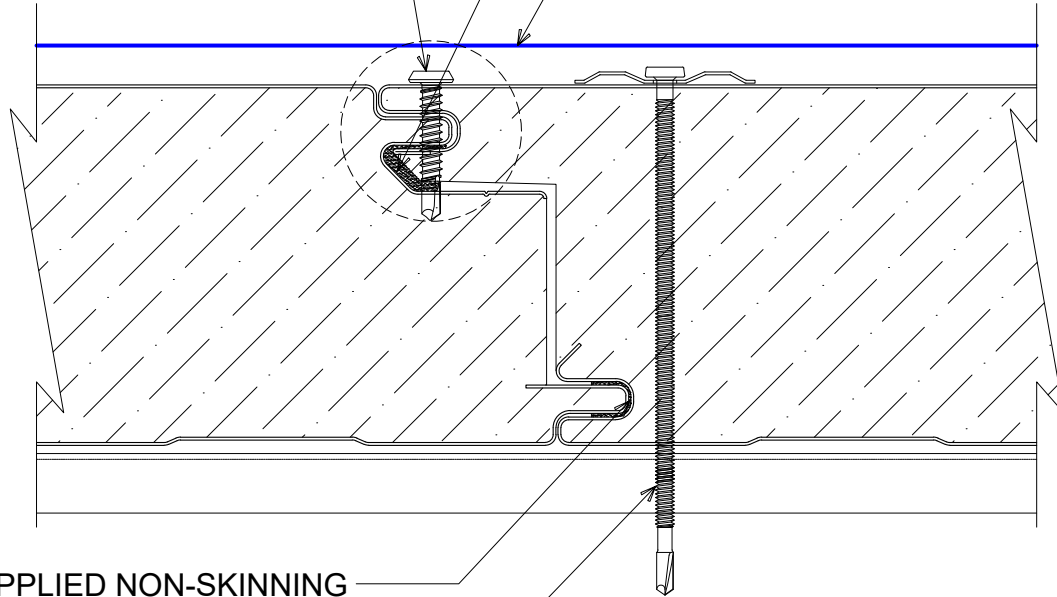
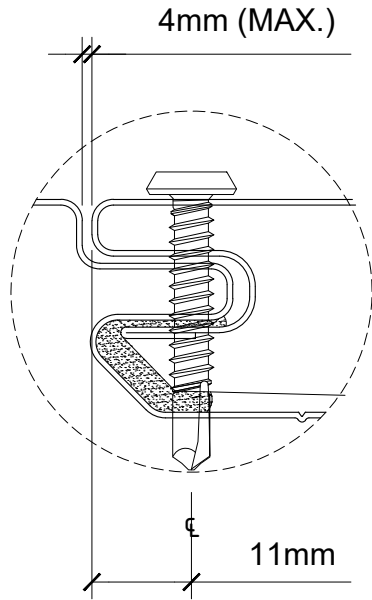


14. - 13 x 1.5" TRU DP1 12" O/C AT JOINERY (ALIGN WITH THROUGH FASTENERS AT THE RAKE)

FACTORY-APPLIED NON-SKINNING BUTYL SEALANT

ONEDEK® THERMOPLASTIC ROOF MEMBRANE (SEE "ONEDEK® ROOFING MEMBRANE" FOR ATTACHMENT OPTIONS)



FACTORY-APPLIED NON-SKINNING BUTYL SEALANT

12. - 24 x PNC DP4 W/ "RP-01" ROOF DECK PLATE

NOTE: FACTORY SEALANT IS APPLIED PRIOR TO THE INLINE CUT OFF SAW AND IS NECESSARY TO LEAVE A 3" TO 5" UNCAULKED SECTION AT PANEL ENDS TO AVOID GETTING CAULKING ON SAW BLADE. THESE AREAS MUST BE FILLED IN THE FIELD.

# RD1 PANEL JOINT (DIAPHRAGM; 40/5-12)

(SECTION VIEW)

DETAIL: RD1 PANEL JOINT (DIAPHRAGM; 40/5-12)

APPLICATION:  
RD1 ROOF DECK, C&I, COLD-STORAGE, COLD-CLIMATE  
AWIP DETAIL NUMBER:  
RDR-CICSCC-PJ-001

DATE: 10/02/23  
DRAWN BY: MMF  
SHEET: 1 OF 1

929 ALDRIDGE ROAD  
VACAVILLE, CA 95688  
TEL: (707) 359-2280  
FAX: (707) 359-2286  
WWW.AWIPANELS.COM

**All Weather**  
Insulated Panels

