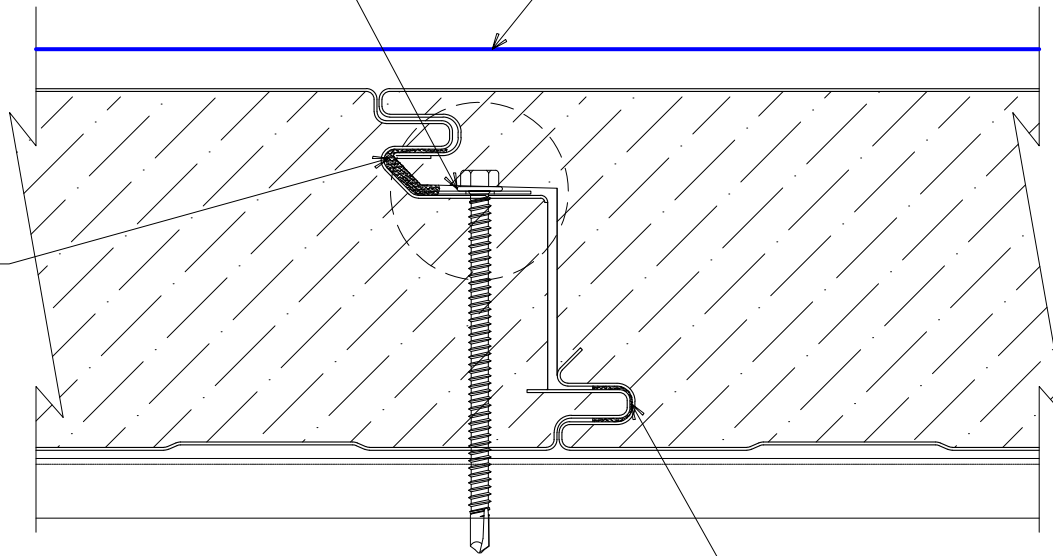


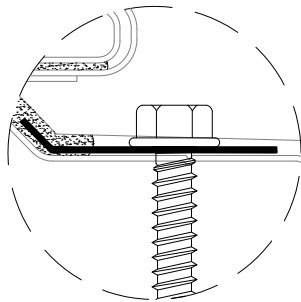
"WC-01" PANEL CLIP W/  
 1/4" Ø HWH DP W/O WASHER  
 PER SUPPORT

ONEDEK® THERMOPLASTIC  
 ROOF MEMBRANE  
 (SEE "ONEDEK® ROOFING MEMBRANE"  
 FOR ATTACHMENT OPTIONS)

FACTORY-APPLIED  
 NON-SKINNING  
 BUTYL SEALANT



FACTORY-APPLIED NON-SKINNING  
 BUTYL SEALANT



"WC-01" ORIENTATION

**NOTE:** FACTORY SEALANT IS APPLIED PRIOR TO THE  
 INLINE CUT OFF SAW AND IS NECESSARY TO LEAVE A  
 3" TO 5" UNCAULKED SECTION AT PANEL ENDS TO  
 AVOID GETTING CAULKING ON SAW BLADE. THESE  
 AREAS MUST BE FILLED IN THE FIELD.

# RD1 PANEL JOINT (HIDDEN CLIP)

(SECTION VIEW)

DETAIL: RD1 PANEL JOINT (HIDDEN CLIP)

APPLICATION:  
 RD1 ROOF DECK, C&I, COLD-STORAGE, COLD-CLIMATE  
 AWIP DETAIL NUMBER:  
 RDR-CICISCC-PJ-003

DATE:  
 10/04/23  
 DRAWN BY:  
 MMF

SHEET:  
 1 OF 1

929 ALDRIDGE ROAD  
 VACAVILLE, CA 95688  
 TEL: (707) 359-2280  
 FAX: (707) 359-2286  
 WWW.AWIPANELS.COM

**All Weather**  
 Insulated Panels

