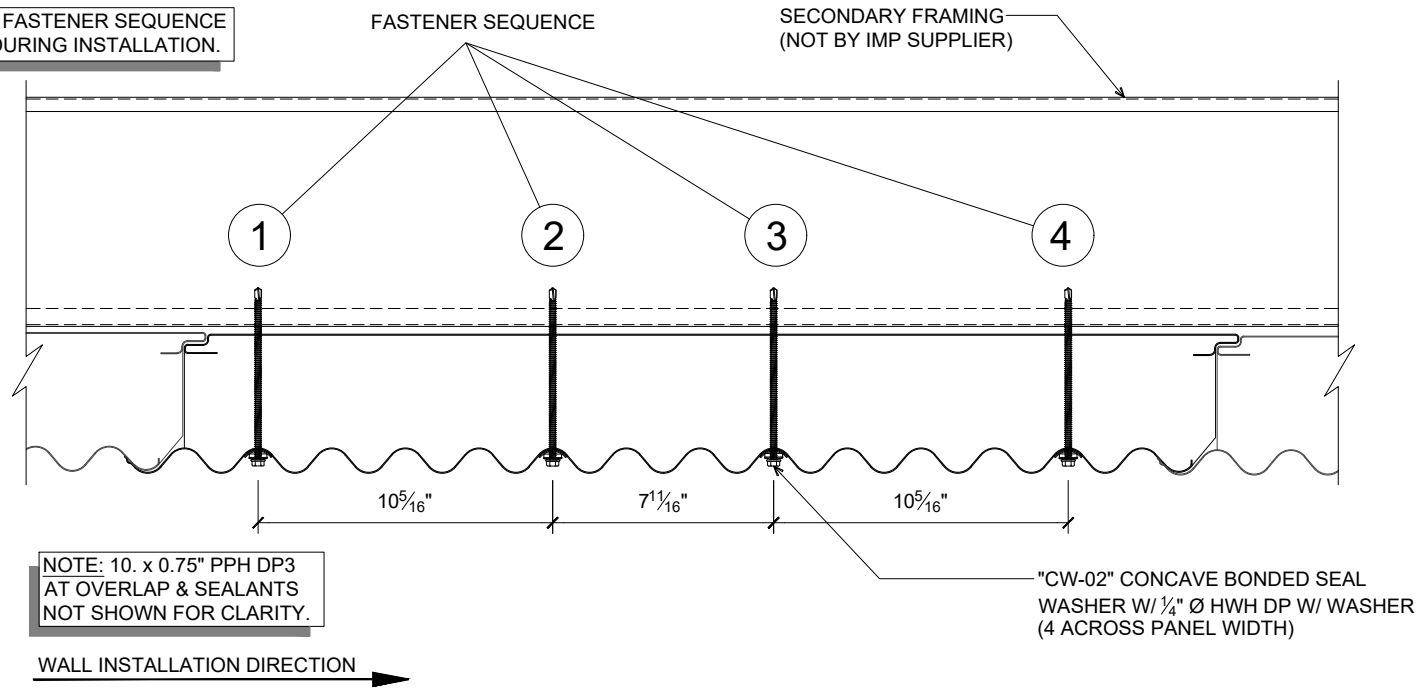


NOTE: ENSURE FASTENER SEQUENCE IS FOLLOWED DURING INSTALLATION.



CW36 WALL PANEL THROUGH FASTENING

(PLAN VIEW)

DETAIL:

WALL PANEL THROUGH FASTENING

APPLICATION:
CW36 WALL, COMMERCIAL & INDUSTRIAL

AWIP DETAIL NUMBER:

CWW-ACI-FS-001

DATE:

10/31/23

DRAWN BY:

MMF

SHEET:

1

OF

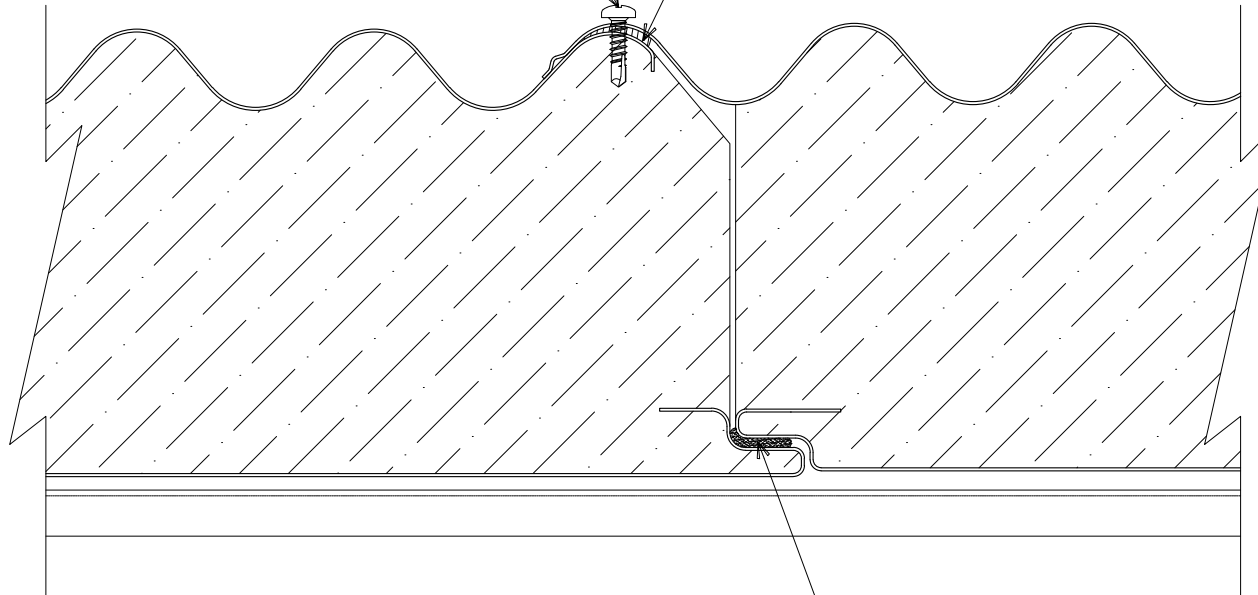
1

929 ALDRIDGE ROAD
VACAVILLE, CA 95688
TEL: (707) 359-2280
FAX: (707) 359-2286
WWW.AWIPANELS.COM



10. x 0.75" PPH DP3 AT
8" ON CENTER

$\frac{3}{4}$ " x $\frac{3}{32}$ " BUTYL TAPE SEALANT



FIELD-APPLIED CONTINUOUS
 $\frac{3}{8}$ " DIAMETER BEAD (APPROXIMATE)
OF NON-SKINNING BUTYL SEALANT

CW36 WALL PANEL JOINT

(PLAN VIEW)

DETAIL:

PANEL JOINT

APPLICATION:
CW36 WALL, COMMERCIAL & INDUSTRIAL
AWIP DETAIL NUMBER:
CWW-ACI-PJ-001

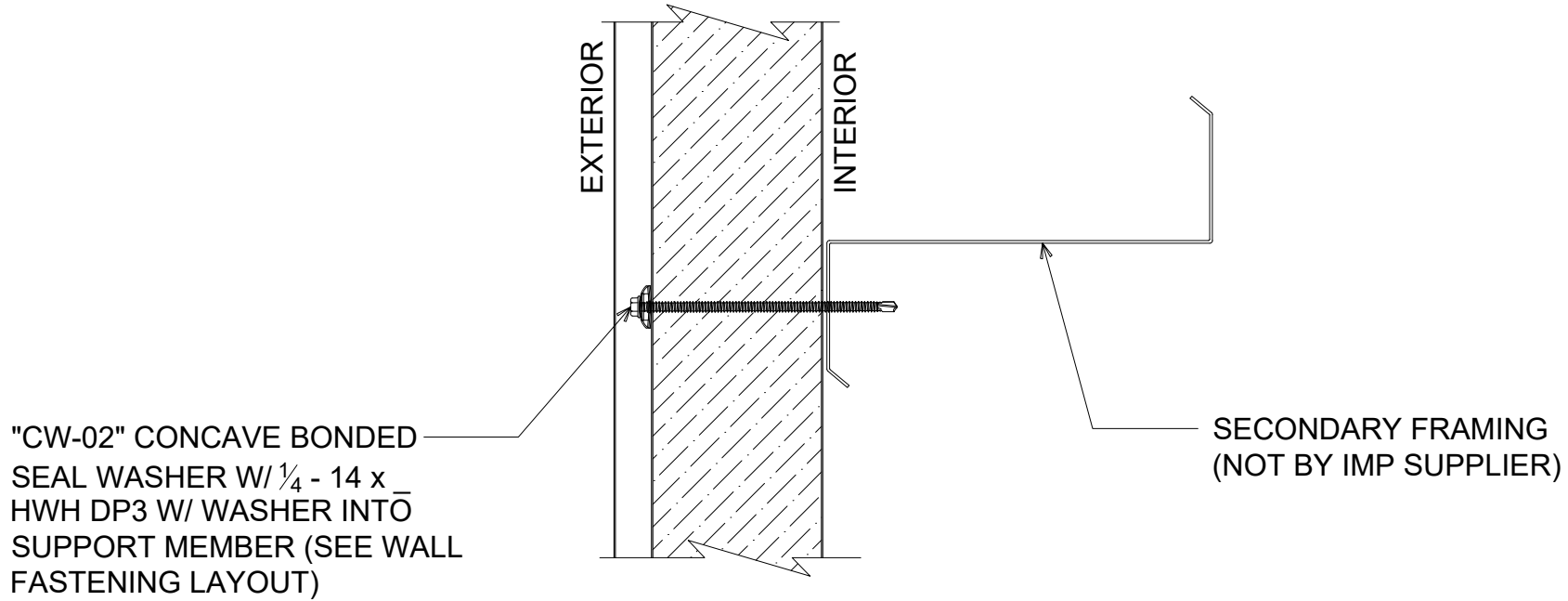
DATE:
10/03/23
DRAWN BY:
MMF

SHEET:
1 OF 1

929 ALDRIDGE ROAD
VACAVILLE, CA 95688
TEL: (707) 359-2280
FAX: (707) 359-2286
WWW.AWIPANELS.COM



NOTE: FASTENING SCHEDULE
MAY VARY DEPENDING ON
SPECIFIC APPLICATION.



CW36 INTERMEDIATE WALL FASTENING

(SECTION VIEW)

DETAIL:

INTERMEDIATE WALL FASTENING

APPLICATION:
CW36 WALL, COMMERCIAL & INDUSTRIAL
AWIP DETAIL NUMBER:
CWW-ACH-W-001

DATE:
10/03/23
DRAWN BY:
MMF

SHEET:
1
OF
1

929 ALDRIDGE ROAD
VACAVILLE, CA 95688
TEL: (707) 359-2280
FAX: (707) 359-2286
WWW.AWIPANELS.COM



"CW-02" CONCAVE BONDED SEAL WASHER W/ ¼ - 14 x HWH DP3 W/ WASHER INTO SUPPORT MEMBER (SEE WALL FASTENING LAYOUT)

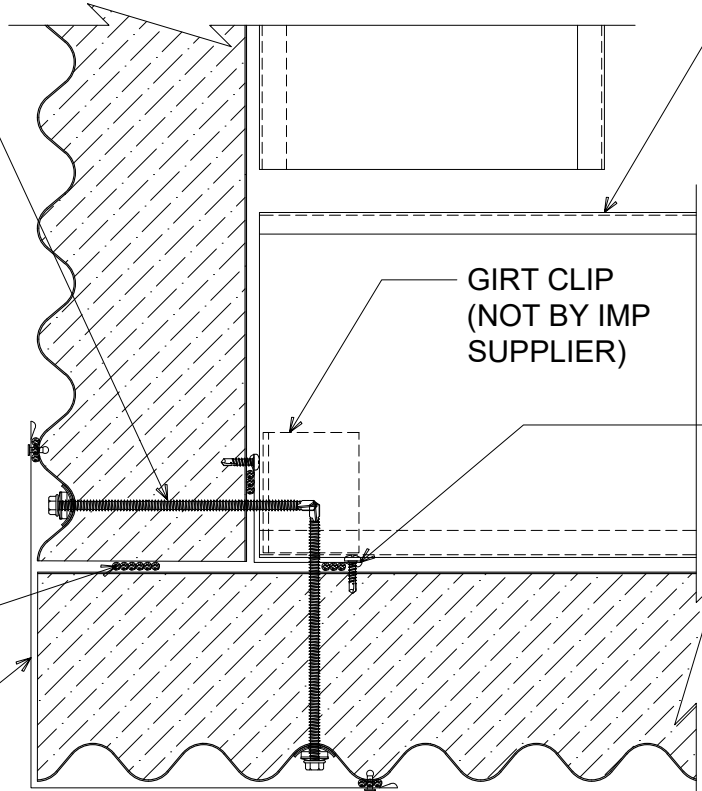
SECONDARY FRAMING (NOT BY IMP SUPPLIER)

GIRT CLIP (NOT BY IMP SUPPLIER)

"IC-01" INSIDE CORNER W/ 10. x 0.75" PPH DP3 12" O/C (SET TRIM IN BUTYL SEALANT)

½" DIAMETER BEAD OF BUTYL SEALANT

"OC-03" OUTSIDE CORNER W/ POP RIVETS 12" O/C (SET TRIM IN BUTYL SEALANT)

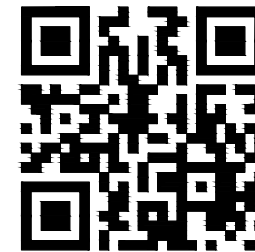


NOTE: FIELD CUT STARTING PANEL AND ENDING PANEL AS REQUIRED AT CORNER TRANSITION.

CORNER TRANSITION - FLAT OUTSIDE

(PLAN VIEW)

CLICK HERE



DETAIL:

CORNER TRANSITION - FLAT OUTSIDE

APPLICATION:

CW36 WALL, COMMERCIAL & INDUSTRIAL

AWIP DETAIL NUMBER:

CWW-ACI-CT-001

929 ALDRIDGE ROAD

VACAVILLE, CA 95688

TEL: (707) 359-2280

FAX: (707) 359-2286

WWW.AWIPANELS.COM



AWIP

All Weather Insulated Panels

929 ALDRIDGE ROAD
VACAVILLE, CA 95688
TEL: (707) 359-2280
FAX: (707) 359-2286
WWW.AWIPANELS.COM

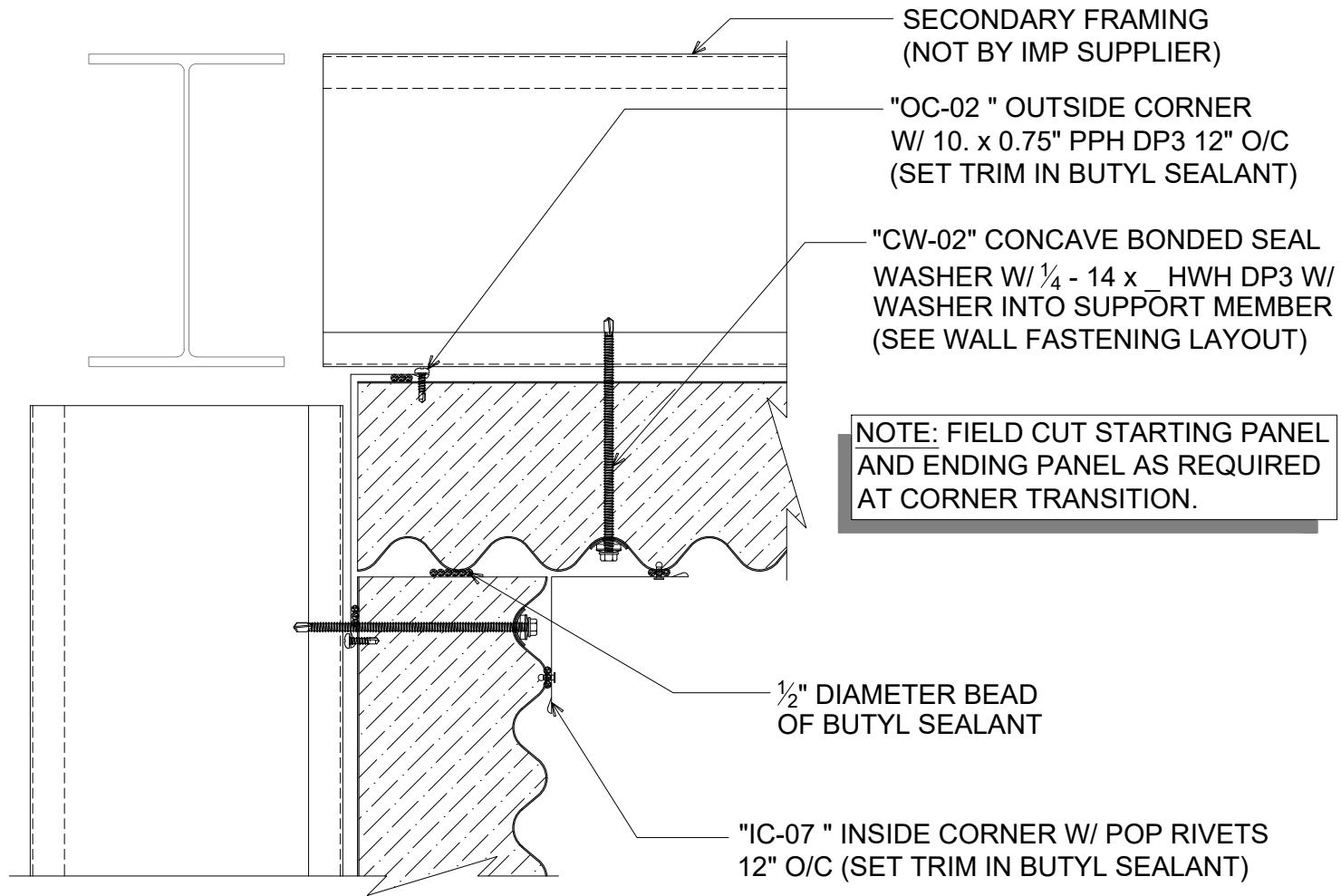
SHEET:

DATE: 11/18/24

DRAWN BY: MMF

1

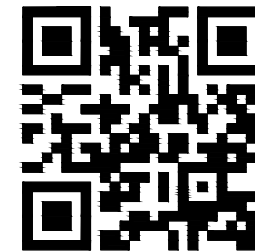
OF 1



CORNER TRANSITION - FLAT INSIDE

(PLAN VIEW)

CLICK HERE



DETAIL:

CORNER TRANSITION - FLAT INSIDE

929 ALDRIDGE ROAD
VACAVILLE, CA 95688
TEL: (707) 359-2280
FAX: (707) 359-2286
WWW.AWIPANELS.COM



APPLICATION:
CW36 WALL, COMMERCIAL & INDUSTRIAL
AWIP DETAIL NUMBER:
CWW-ACI-CT-002

DATE:
11/18/24

DRAWN BY:
MMF

SHEET:

1

OF

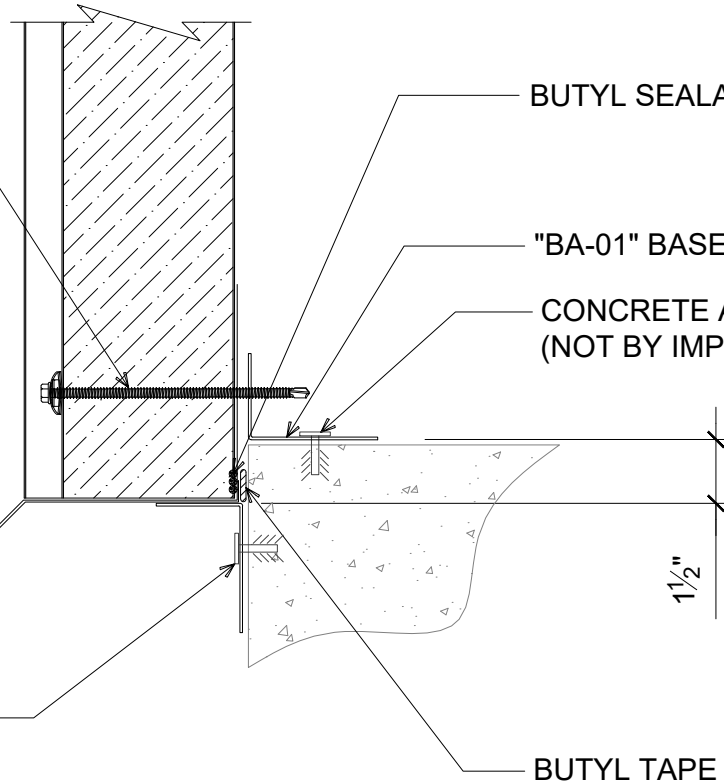
1

"CW-02" CONCAVE BONDED SEAL WASHER W/ 1/4 - 14 x _____ HWH DP3 W/ WASHER INTO SUPPORT MEMBER (SEE WALL FASTENING LAYOUT)

NOTE: TREAT RAW/UNPAINTED EDGE OF EXPOSED METAL W/ CLEAR ACRYLIC PAINT TO AVOID RUSTING (NOT BY IMP SUPPLIER)

"DF-04" DRIP FLASHING

SUPPORT ANGLE & ALL ACCESSORIES BY OTHERS (NOT BY IMP SUPPLIER)



BUTYL SEALANT

"BA-01" BASE ANGLE

CONCRETE ANCHORS (NOT BY IMP SUPPLIER)

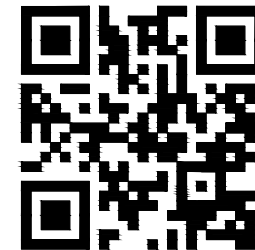
1 1/2"

BUTYL TAPE

BASE CONDITION - BYPASS

(SECTION VIEW)

CLICK HERE



DETAIL:

BASE CONDITION - BYPASS

APPLICATION:

CW36 WALL, COMMERCIAL & INDUSTRIAL

AWIP DETAIL NUMBER:

CWWW-ACH-BC-001

929 ALDRIDGE ROAD

VACAVILLE, CA 95688

TEL: (707) 359-2280

FAX: (707) 359-2286

WWW.AWIPANELS.COM

All Weather
Insulated Panels



SHEET:

DATE:
11/18/24

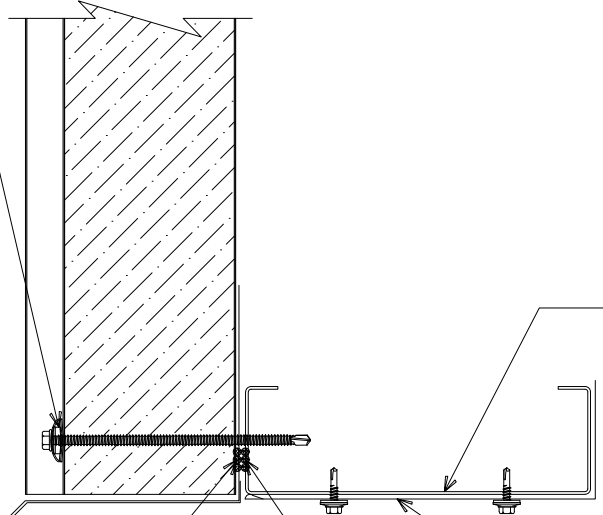
DRAWN BY:
MMF

1

OF 1

"CW-02" CONCAVE BONDED SEAL WASHER W/ 1/4 - 14 x HWH DP3 W/ WASHER INTO SUPPORT MEMBER (SEE WALL FASTENING LAYOUT)

NOTE: TREAT RAW/UNPAINTED EDGE OF EXPOSED METAL W/ CLEAR ACRYLIC PAINT TO AVOID RUSTING (NOT BY IMP SUPPLIER)



"DF-04" DRIP FLASHING

SET PANEL IN BUTYL SEALANT

FRAMED OPENING (NOT BY IMP SUPPLIER)

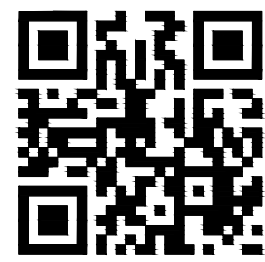
"JT-01" JAMB TRIM W/ (2) 1/4 - 14 x 0.88" HWH DP1 36" O/C (AT O.H.D. ONLY)

BUTYL SEALANT (OPTIONAL; NOT BY IMP SUPPLIER)

FRAMED OPENING - HEADER

(SECTION VIEW)

CLICK HERE

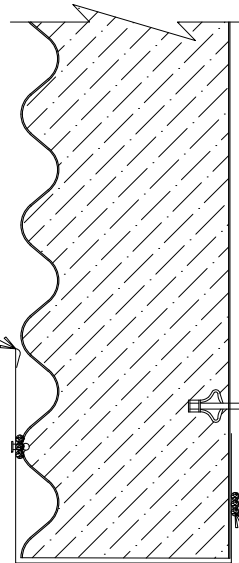


DETAIL: FRAMED OPENING - HEADER		SHEET: 1 OF 1
APPLICATION: CW36 WALL, COMMERCIAL & INDUSTRIAL	DATE: 11/18/24	
AWIP DETAIL NUMBER: CWWW-ACH-FO-001	DRAWN BY: MMF	

929 ALDRIDGE ROAD
VACAVILLE, CA 95688
TEL: (707) 359-2280
FAX: (707) 359-2286
WWW.AWIPANELS.COM



"CT-07" CAP TRIM W/
POP RIVETS 12" O/C



(1) "GC-01" GIRT CLIP W/
(1) FAS 10-4 FABLOK 20" O/C

FRAMED OPENING
(NOT BY IMP SUPPLIER)

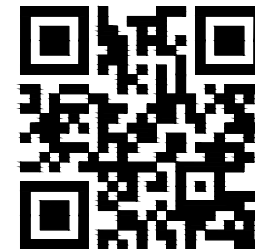
"JT-01" JAMB TRIM W/
(2) 1/4 -14 x 0.88" HWH DP1
36" O/C (AT O.H.D. ONLY)

BUTYL SEALANT (OPTIONAL;
NOT BY IMP SUPPLIER)

FRAMED OPENING - JAMB

(PLAN VIEW)

CLICK HERE



DETAIL:

FRAMED OPENING - JAMB

APPLICATION:

CW36 WALL, COMMERCIAL & INDUSTRIAL

AWIP DETAIL NUMBER:

CWWW-ACH-FO-002

929 ALDRIDGE ROAD

VACAVILLE, CA 95688

TEL: (707) 359-2280

FAX: (707) 359-2286

WWW.AWIPANELS.COM



All Weather
Insulated Panels

929 ALDRIDGE ROAD
VACAVILLE, CA 95688
TEL: (707) 359-2280
FAX: (707) 359-2286
WWW.AWIPANELS.COM

DATE:
11/18/24

DRAWN BY:
MMF

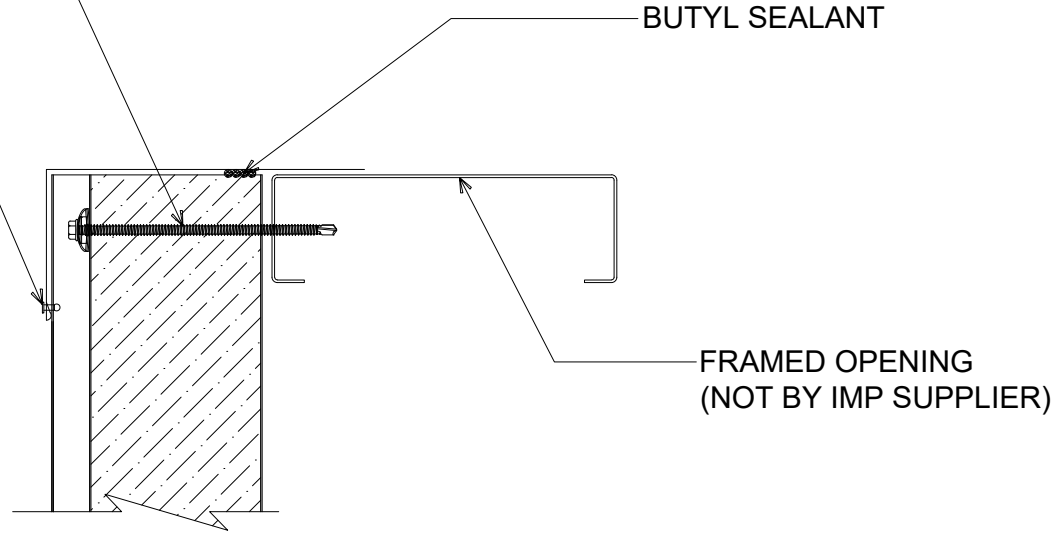
SHEET:

1

OF
1

"CW-02" CONCAVE BONDED
SEAL WASHER W/ 1/4 - 14 x
HWH DP3 W/ WASHER INTO
SUPPORT MEMBER (SEE WALL
FASTENING LAYOUT)

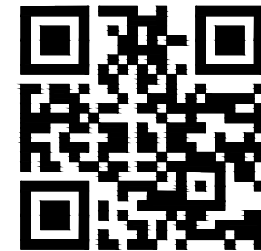
"SF-02" SILL FLASHING W/
POP RIVETS AT EACH HIGH



FRAMED OPENING - SILL

(SECTION VIEW)

CLICK HERE



DETAIL:

FRAMED OPENING - SILL

APPLICATION:

CW36 WALL, COMMERCIAL & INDUSTRIAL

AWIP DETAIL NUMBER:

C1WW-ACH-FO-003

929 ALDRIDGE ROAD
VACAVILLE, CA 95688
TEL: (707) 359-2280
FAX: (707) 359-2286
WWW.AWIPANELS.COM



DATE:
11/18/24

DRAWN BY:
MMF

SHEET:

1

OF
1

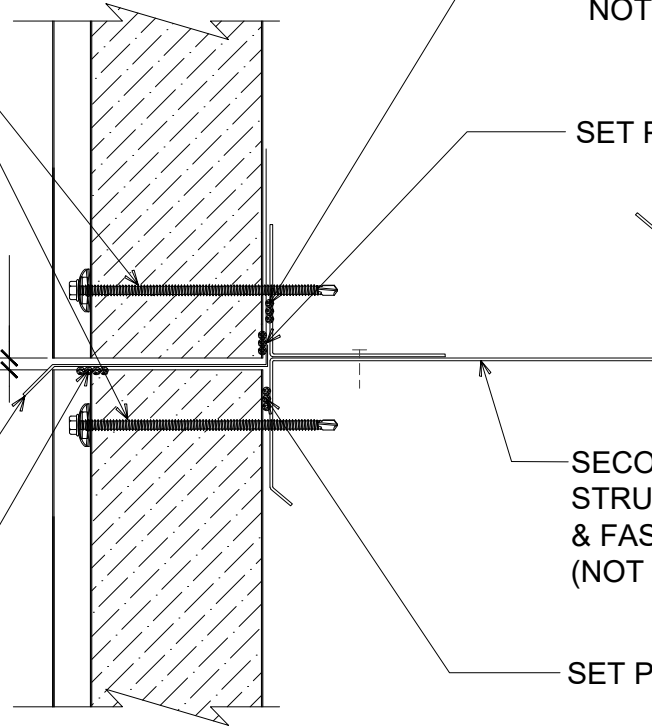
"CW-02" CONCAVE BONDED SEAL WASHER W/ 1/4 - 14 x HWH DP3 W/ WASHER INTO SUPPORT MEMBER (SEE WALL FASTENING LAYOUT)

NOTE: TREAT RAW/UNPAINTED EDGE OF EXPOSED METAL W/ CLEAR ACRYLIC PAINT TO AVOID RUSTING (NOT BY IMP SUPPLIER)

"DF-04" DRIP FLASHING

BUTYL SEALANT

1/4"



BUTYL SEALANT (OPTIONAL; NOT BY IMP SUPPLIER)

SET PANEL IN BUTYL SEALANT

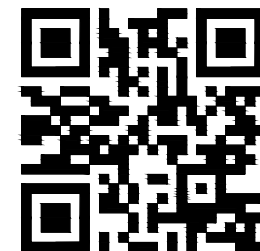
SECONDARY FRAMING, STRUCTURAL SUPPORT ANGLE & FASTENERS BY OTHERS (NOT BY IMP SUPPLIER)

SET PANEL IN BUTYL SEALANT

STACK JOINT

(SECTION VIEW)

CLICK HERE



DETAIL:

STACK JOINT

929 ALDRIDGE ROAD
VACAVILLE, CA 95688
TEL: (707) 359-2280
FAX: (707) 359-2286
WWW.AWIPANELS.COM



APPLICATION:
CW36 WALL, COMMERCIAL & INDUSTRIAL

AWIP DETAIL NUMBER:
CWW-ACI-SJ-001

DATE:
11/18/24

DRAWN BY:
MMF

SHEET:
1

OF
1