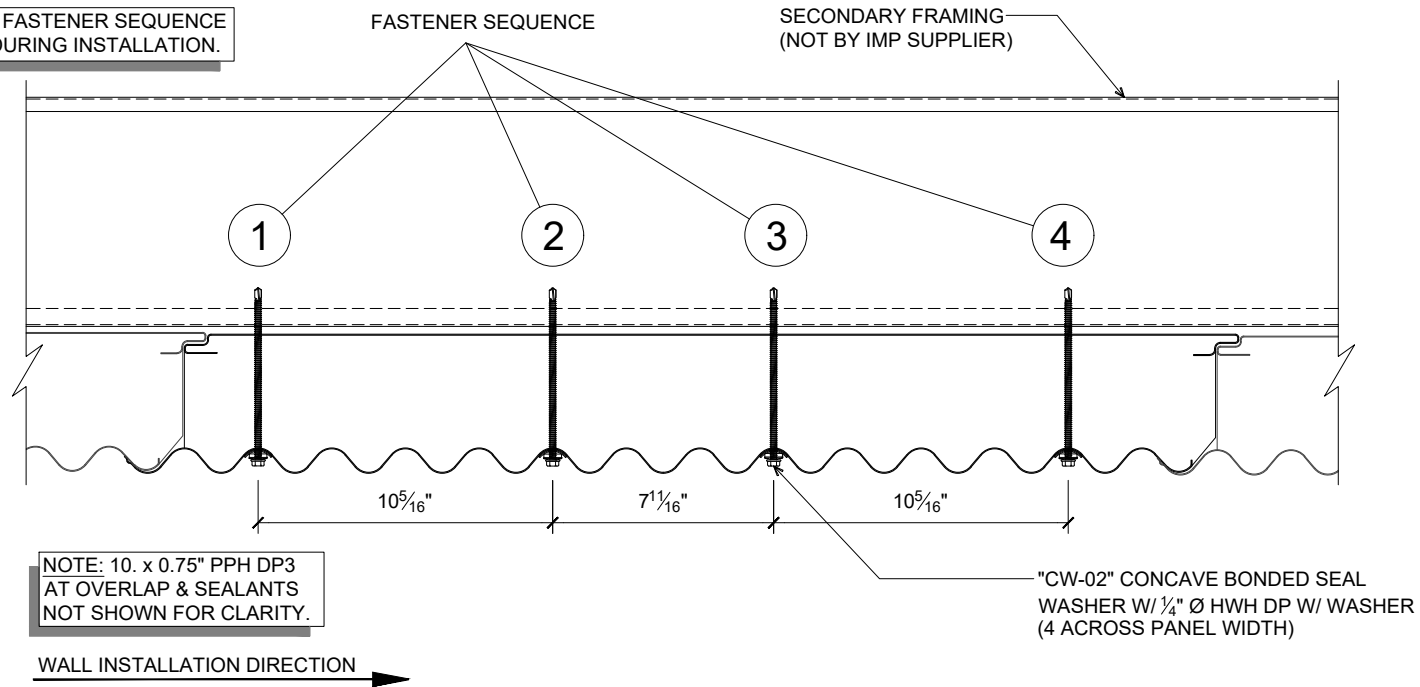


NOTE: ENSURE FASTENER SEQUENCE IS FOLLOWED DURING INSTALLATION.



NOTE: 10. x 0.75" PPH DP3 AT OVERLAP & SEALANTS NOT SHOWN FOR CLARITY.

WALL INSTALLATION DIRECTION →

CW36 WALL PANEL THROUGH FASTENING

(PLAN VIEW)

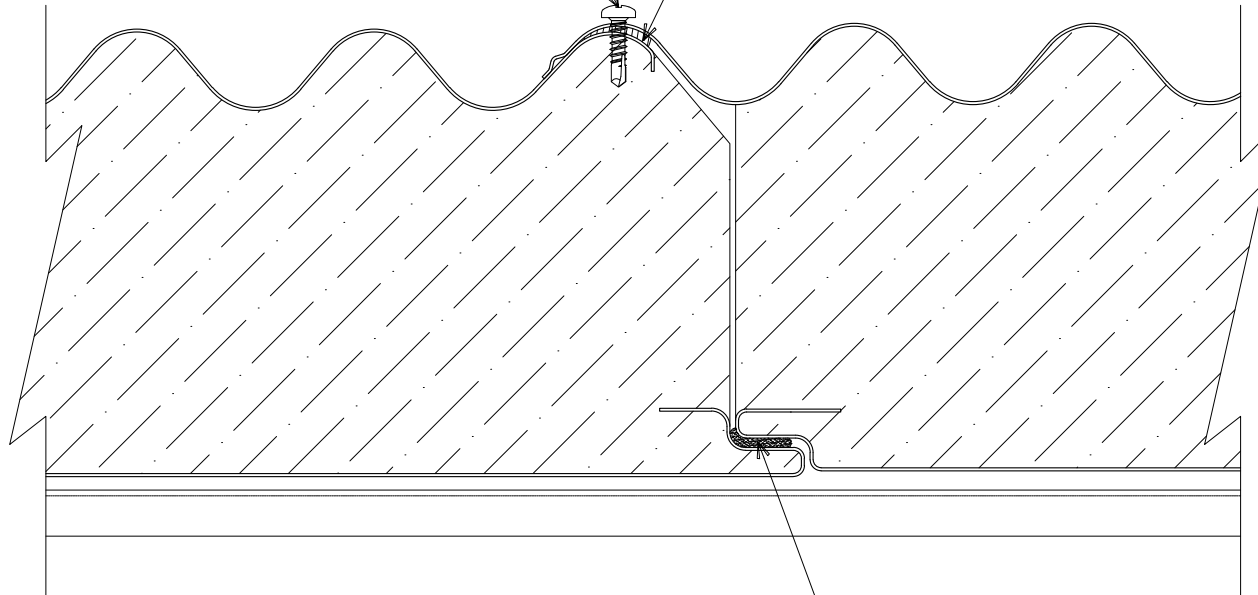
DETAIL:	WALL PANEL THROUGH FASTENING		SHEET:
	APPLICATION:	DATE:	1
	CW36 WALL, COMMERCIAL & INDUSTRIAL	10/31/23	OF 1
	AWIP DETAIL NUMBER:	DRAWN BY:	
	CWW-ACI-FS-001	MMF	

929 ALDRIDGE ROAD
 VACAVILLE, CA 95688
 TEL: (707) 359-2280
 FAX: (707) 359-2286
 WWW.AWIPANELS.COM



10. x 0.75" PPH DP3 AT
8" ON CENTER

$\frac{3}{4}$ " x $\frac{3}{32}$ " BUTYL TAPE SEALANT



FIELD-APPLIED CONTINUOUS
 $\frac{3}{8}$ " DIAMETER BEAD (APPROXIMATE)
OF NON-SKINNING BUTYL SEALANT

CW36 WALL PANEL JOINT

(PLAN VIEW)

DETAIL:

PANEL JOINT

APPLICATION:
CW36 WALL, COMMERCIAL & INDUSTRIAL
AWIP DETAIL NUMBER:
CWW-ACI-PJ-001

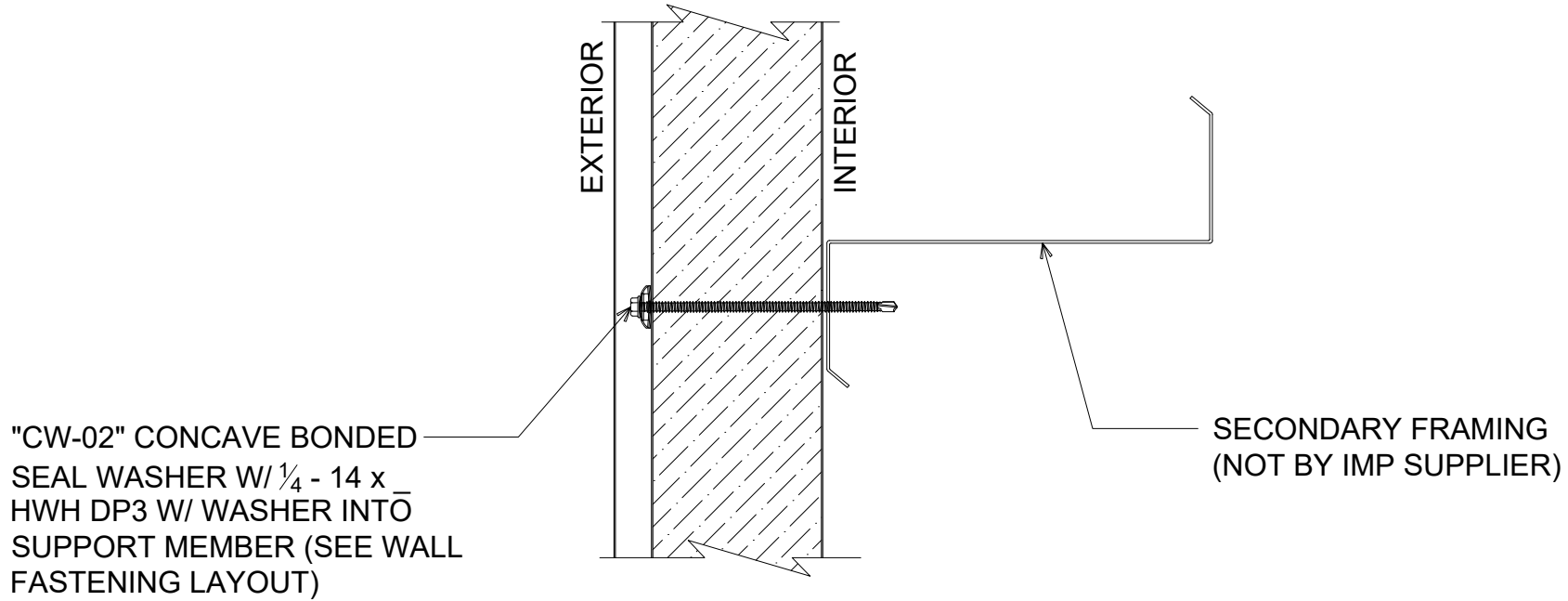
DATE:
10/03/23
DRAWN BY:
MMF

SHEET:
1 OF 1

929 ALDRIDGE ROAD
VACAVILLE, CA 95688
TEL: (707) 359-2280
FAX: (707) 359-2286
WWW.AWIPANELS.COM



NOTE: FASTENING SCHEDULE
MAY VARY DEPENDING ON
SPECIFIC APPLICATION.



CW36 INTERMEDIATE WALL FASTENING

(SECTION VIEW)

DETAIL:
INTERMEDIATE WALL FASTENING

APPLICATION:
CW36 WALL, COMMERCIAL & INDUSTRIAL
AWIP DETAIL NUMBER:
CWW-ACH-W-001

DATE:
10/03/23
DRAWN BY:
MMF

SHEET:
1
OF
1

929 ALDRIDGE ROAD
VACAVILLE, CA 95688
TEL: (707) 359-2280
FAX: (707) 359-2286
WWW.AWIPANELS.COM

All Weather
Insulated Panels



"CW-02" CONCAVE BONDED SEAL WASHER W/ 1/4" - 14 x HWH DP3 W/ WASHER INTO SUPPORT MEMBER (SEE WALL FASTENING LAYOUT)

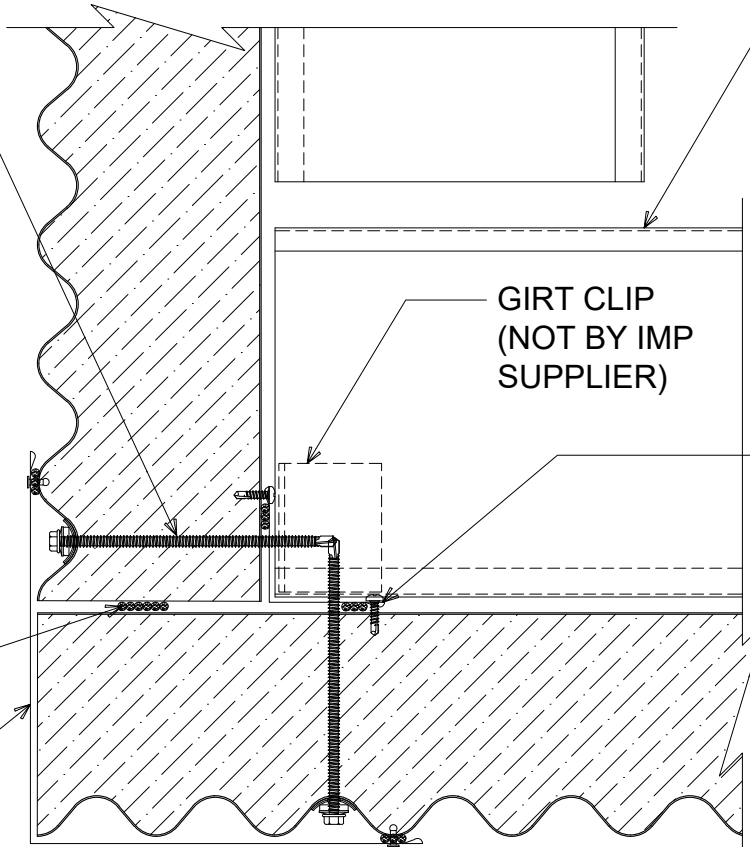
SECONDARY FRAMING (NOT BY IMP SUPPLIER)

GIRT CLIP (NOT BY IMP SUPPLIER)

"IC-01" INSIDE CORNER W/ 10. x 0.75" PPH DP3 12" O/C (SET TRIM IN BUTYL SEALANT)

1/2" DIAMETER BEAD OF BUTYL SEALANT

"OC-03" OUTSIDE CORNER W/ POP RIVETS 12" O/C (SET TRIM IN BUTYL SEALANT)



NOTE: FIELD CUT STARTING PANEL AND ENDING PANEL AS REQUIRED AT CORNER TRANSITION.

CORNER TRANSITION - FLAT OUTSIDE

(PLAN VIEW)

DETAIL: CORNER TRANSITION - FLAT OUTSIDE

APPLICATION:
CW/36 WALL, COMMERCIAL & INDUSTRIAL
AWIP DETAIL NUMBER:
CWW-AI-CT-001

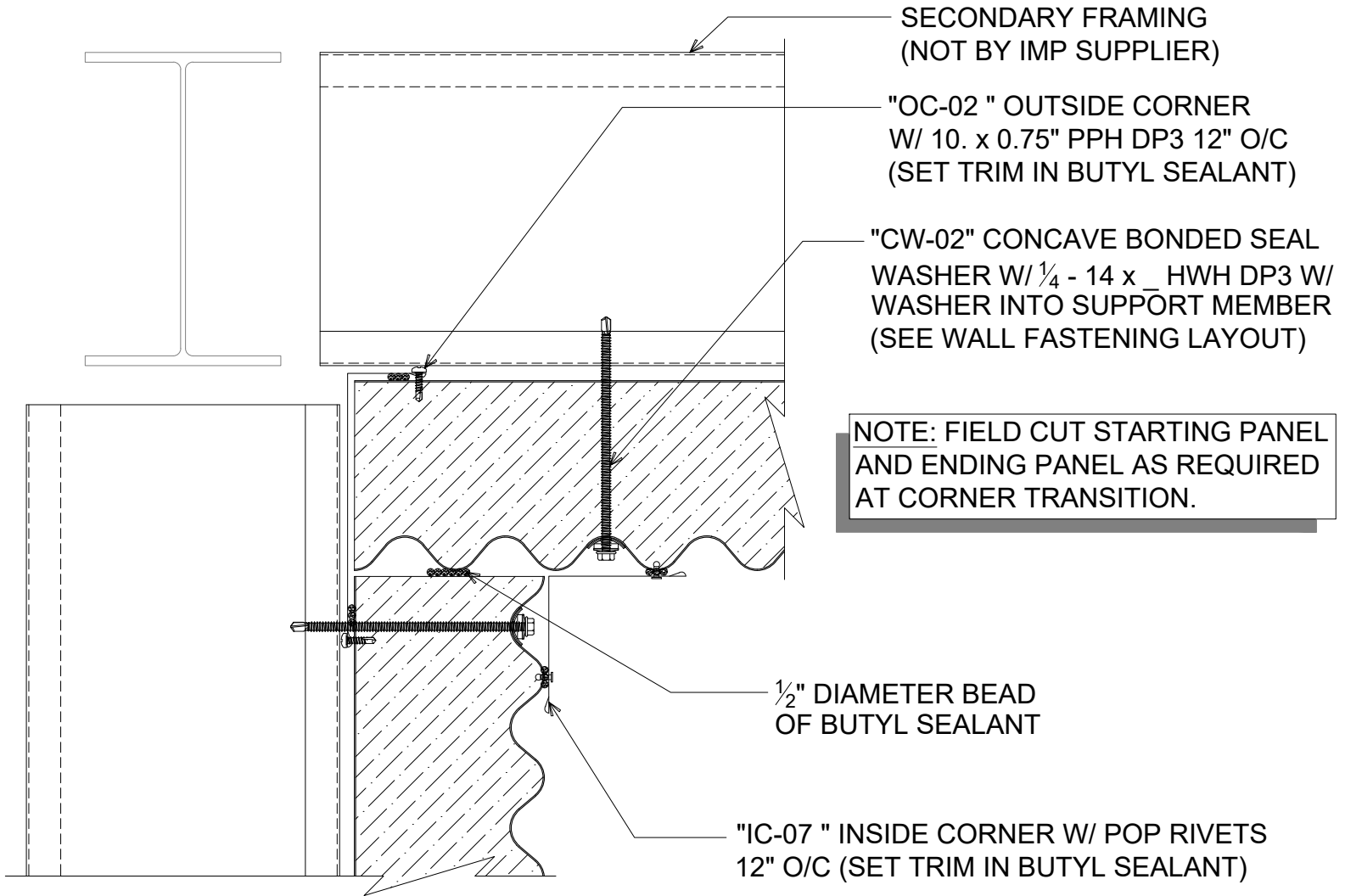
DATE:
10/03/23
DRAWN BY:
MMF

SHEET:
1 OF 1

929 ALDRIDGE ROAD
VACAVILLE, CA 95688
TEL: (707) 359-2280
FAX: (707) 359-2286
WWW.AWIPANELS.COM

All Weather
Insulated Panels





CORNER TRANSITION - FLAT INSIDE

(PLAN VIEW)

DETAIL:	CORNER TRANSITION - FLAT INSIDE		SHEET:	1 OF 1
	APPLICATION:	DATE:	DRAWN BY:	
	CW/36 WALL, COMMERCIAL & INDUSTRIAL	10/03/23	MMF	
	AWIP DETAIL NUMBER:			
	CWW-ACI-CT-002			

929 ALDRIDGE ROAD
VACAVILLE, CA 95688
TEL: (707) 359-2280
FAX: (707) 359-2286
WWW.AWIPANELS.COM

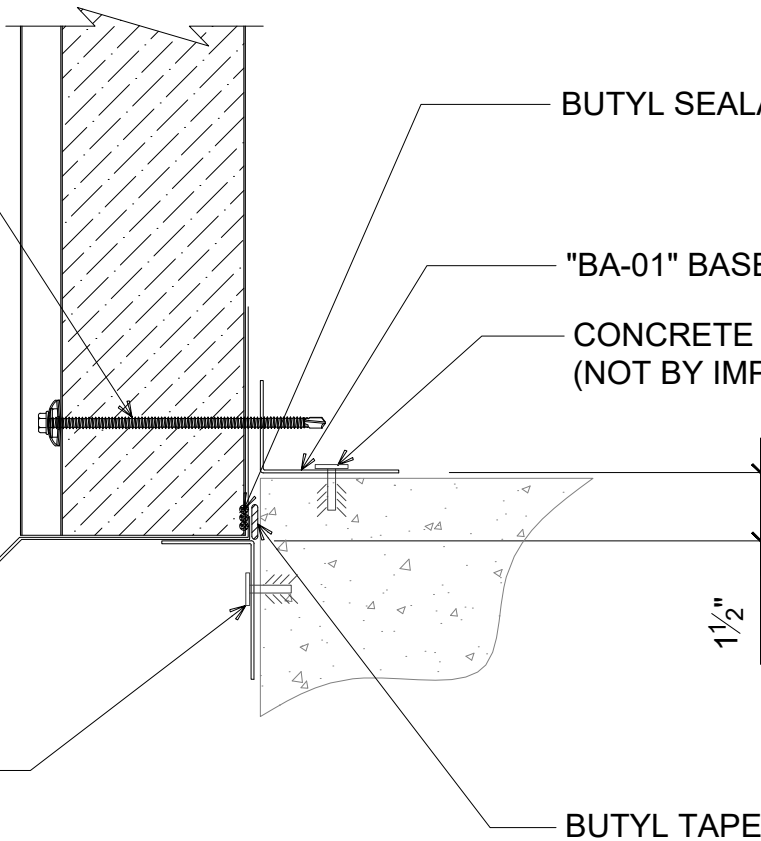


"CW-02" CONCAVE BONDED SEAL WASHER W/ 1/4" - 14 x HWH DP3 W/ WASHER INTO SUPPORT MEMBER (SEE WALL FASTENING LAYOUT)

NOTE: TREAT RAW/UNPAINTED EDGE OF EXPOSED METAL W/ CLEAR ACRYLIC PAINT TO AVOID RUSTING (NOT BY IMP SUPPLIER)

"DF-04" DRIP FLASHING

SUPPORT ANGLE & ALL ACCESSORIES BY OTHERS (NOT BY IMP SUPPLIER)



BUTYL SEALANT

"BA-01" BASE ANGLE

CONCRETE ANCHORS (NOT BY IMP SUPPLIER)

1 1/2"

BUTYL TAPE

BASE CONDITION - BYPASS

(SECTION VIEW)

DETAIL:

BASE CONDITION - BYPASS

APPLICATION:

CW36 WALL, COMMERCIAL & INDUSTRIAL

AWIP DETAIL NUMBER:

CWW-ACI-BC-001

DATE:

10/03/23

DRAWN BY:

MMF

SHEET:

1

OF

1

929 ALDRIDGE ROAD
VACAVILLE, CA 95688
TEL: (707) 359-2280
FAX: (707) 359-2286
WWW.AWIPANELS.COM

All Weather
Insulated Panels

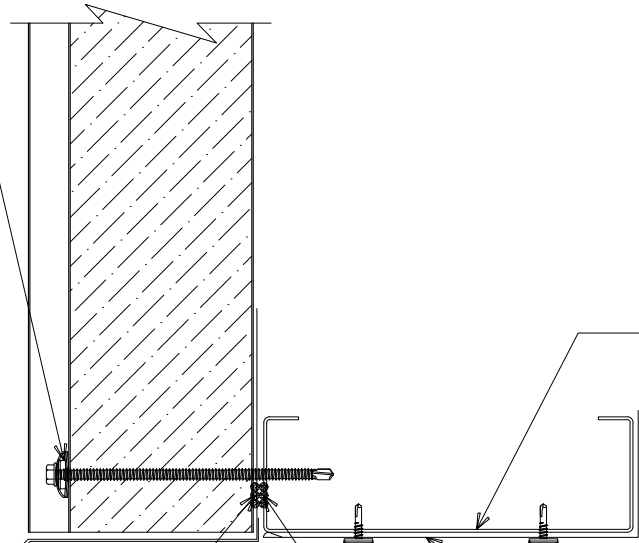


"CW-02" CONCAVE BONDED SEAL WASHER W/ 1/4 - 14 x HWH DP3 W/ WASHER INTO SUPPORT MEMBER (SEE WALL FASTENING LAYOUT)

NOTE: TREAT RAW/UNPAINTED EDGE OF EXPOSED METAL W/ CLEAR ACRYLIC PAINT TO AVOID RUSTING (NOT BY IMP SUPPLIER)

"DF-04" DRIP FLASHING

SET PANEL IN BUTYL SEALANT



FRAMED OPENING (NOT BY IMP SUPPLIER)

"JT-01" JAMB TRIM W/ (2) 1/4 - 14 x 0.88" HWH DP1 36" O/C (AT O.H.D. ONLY)

BUTYL SEALANT (OPTIONAL; NOT BY IMP SUPPLIER)

FRAMED OPENING - HEADER

(SECTION VIEW)

DETAIL:

FRAMED OPENING - HEADER

APPLICATION:
CW/36 WALL, COMMERCIAL & INDUSTRIAL

AWIP DETAIL NUMBER:
CWW-ACI-FO-001

DATE:
10/03/23

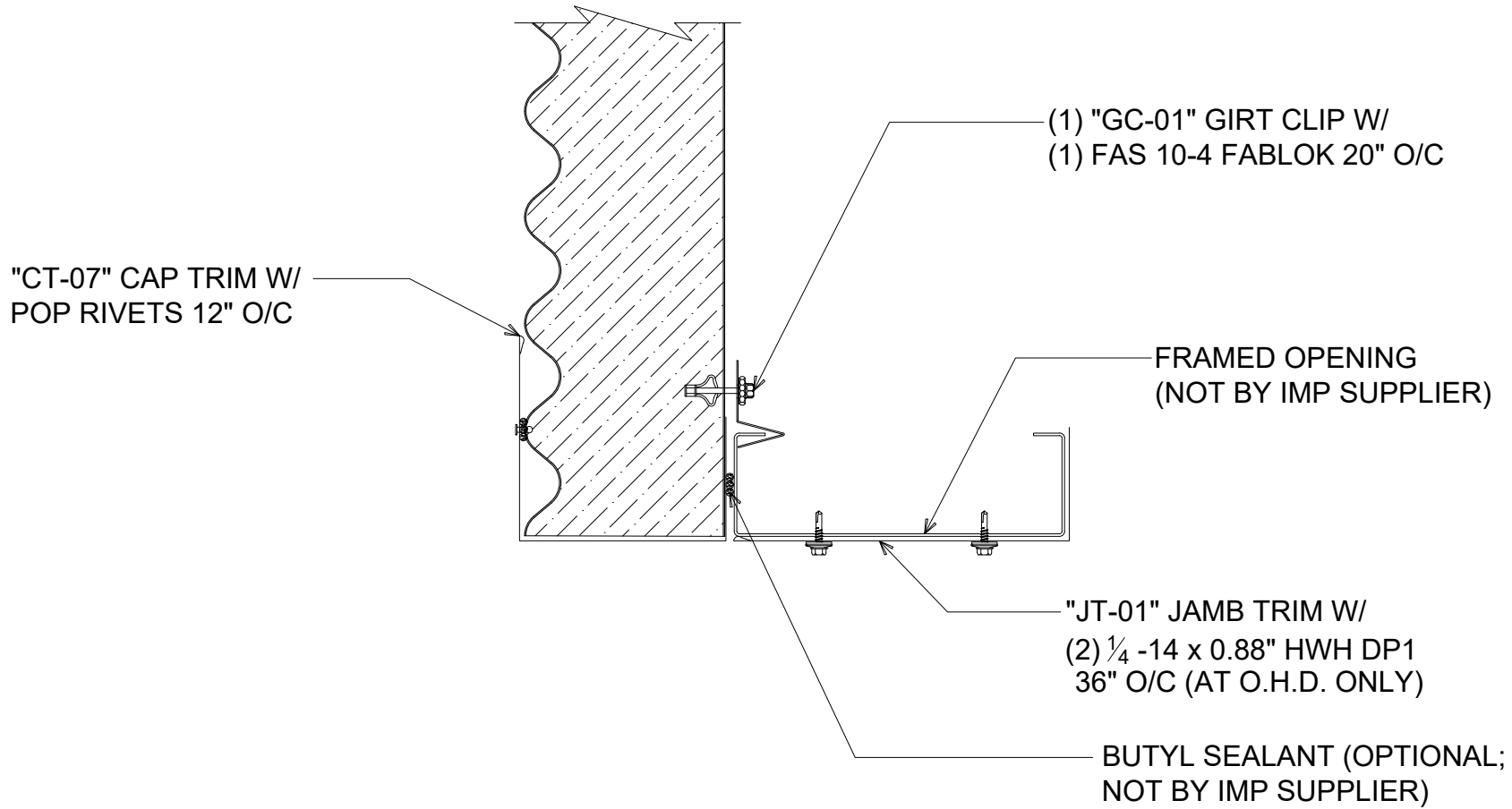
DRAWN BY:
MMF

SHEET:

1 OF 1

929 ALDRIDGE ROAD
VACAVILLE, CA 95688
TEL: (707) 359-2280
FAX: (707) 359-2286
WWW.AWIPANELS.COM





FRAMED OPENING - JAMB

(PLAN VIEW)

DETAIL:

FRAMED OPENING - JAMB

APPLICATION:
 CW/36 WALL, COMMERCIAL & INDUSTRIAL
 AWIP DETAIL NUMBER:
 CWM-ACI-FO-002

929 ALDRIDGE ROAD
 VACAVILLE, CA 95688
 TEL: (707) 359-2280
 FAX: (707) 359-2286
 WWW.AWIPANELS.COM

All Weather
 Insulated Panels



SHEET:

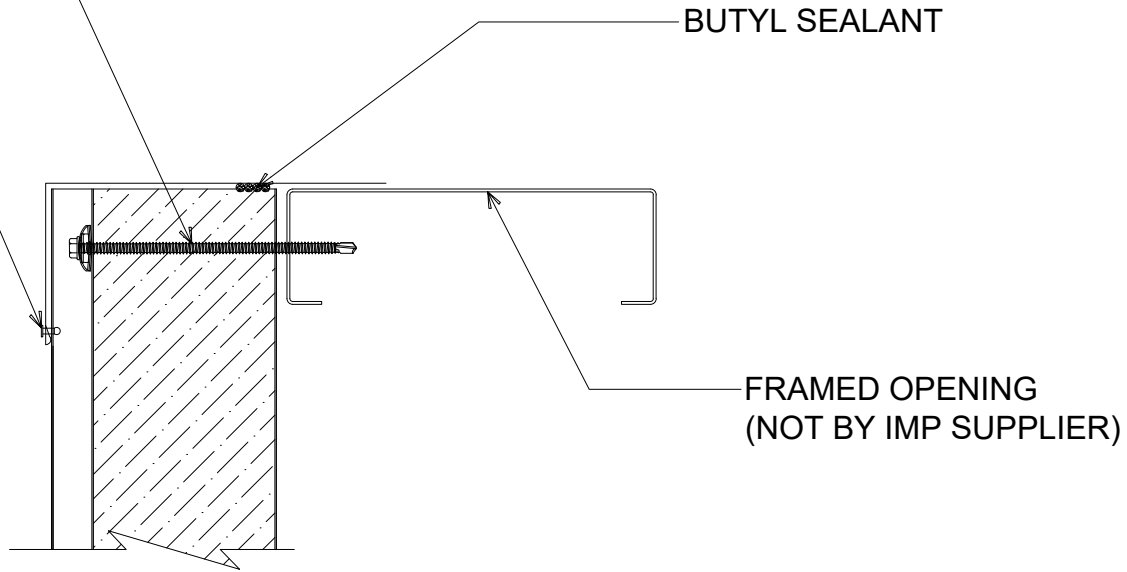
DATE:
10/03/23

DRAWN BY:
MMF

1 OF 1

"CW-02" CONCAVE BONDED
SEAL WASHER W/ 1/4 - 14 x
HWH DP3 W/ WASHER INTO
SUPPORT MEMBER (SEE WALL
FASTENING LAYOUT)

"SF-02" SILL FLASHING W/
POP RIVETS AT EACH HIGH



#

FRAMED OPENING - SILL

(SECTION VIEW)

DETAIL:

FRAMED OPENING - SILL

APPLICATION:
CW/36 WALL, COMMERCIAL & INDUSTRIAL
AWIP DETAIL NUMBER:
CWW-ACI-FO-003

929 ALDRIDGE ROAD
VACAVILLE, CA 95688
TEL: (707) 359-2280
FAX: (707) 359-2286
WWW.AWIPANELS.COM



SHEET:

DATE:
10/03/23

DRAWN BY:
MMF

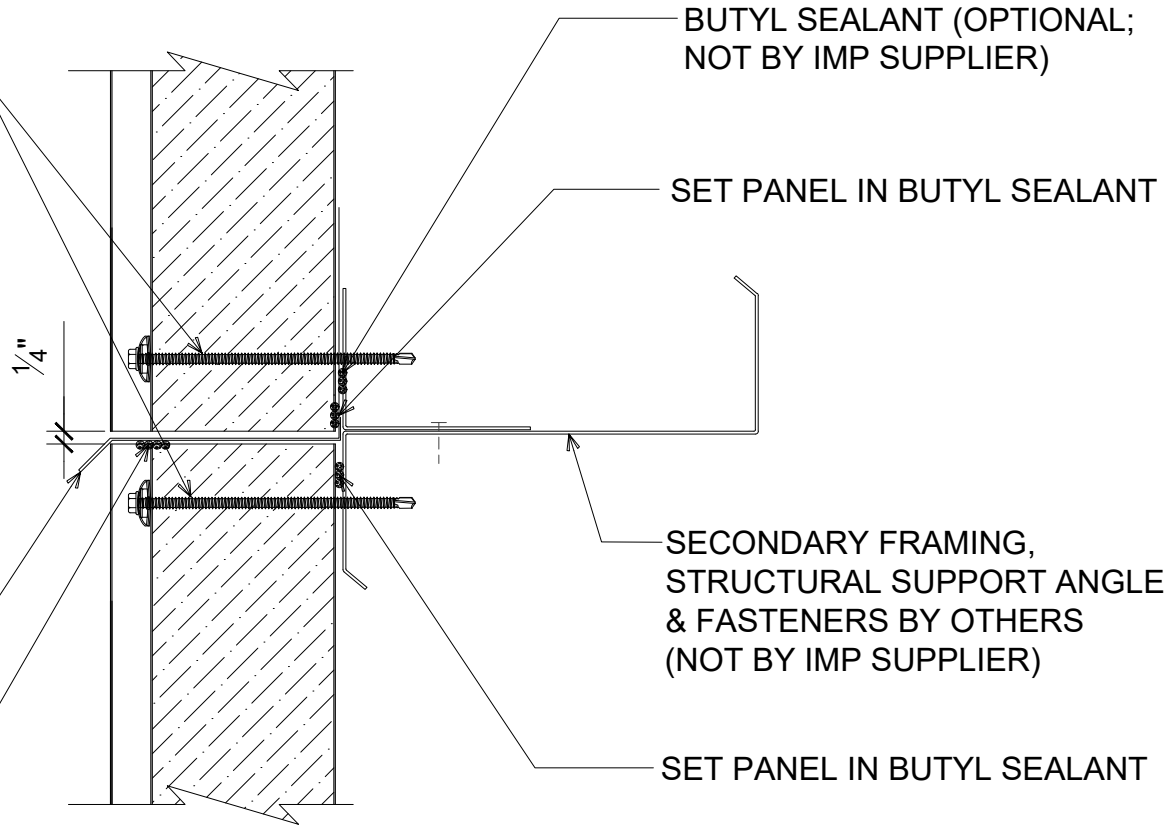
1
OF
1

"CW-02" CONCAVE BONDED SEAL WASHER W/ 1/4" - 14 x HWH DP3 W/ WASHER INTO SUPPORT MEMBER (SEE WALL FASTENING LAYOUT)

NOTE: TREAT RAW/UNPAINTED EDGE OF EXPOSED METAL W/ CLEAR ACRYLIC PAINT TO AVOID RUSTING (NOT BY IMP SUPPLIER)

"DF-04" DRIP FLASHING

BUTYL SEALANT



BUTYL SEALANT (OPTIONAL; NOT BY IMP SUPPLIER)

SET PANEL IN BUTYL SEALANT

SECONDARY FRAMING, STRUCTURAL SUPPORT ANGLE & FASTENERS BY OTHERS (NOT BY IMP SUPPLIER)

SET PANEL IN BUTYL SEALANT

#

STACK JOINT

(SECTION VIEW)

DETAIL:

STACK JOINT

APPLICATION:
CW/36 WALL, COMMERCIAL & INDUSTRIAL
AWIP DETAIL NUMBER:
CWW-ACI-SJ-001

DATE:
10/03/23
DRAWN BY:
MMF

SHEET:
1
OF
1

929 ALDRIDGE ROAD
VACAVILLE, CA 95688
TEL: (707) 359-2280
FAX: (707) 359-2286
WWW.AWIPANELS.COM

All Weather
Insulated Panels

