

DETAIL: ONEDEK® TAPERED INSULATION AND SCUPPER INSTALLATION

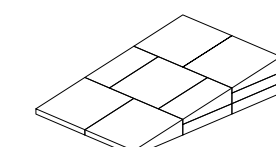
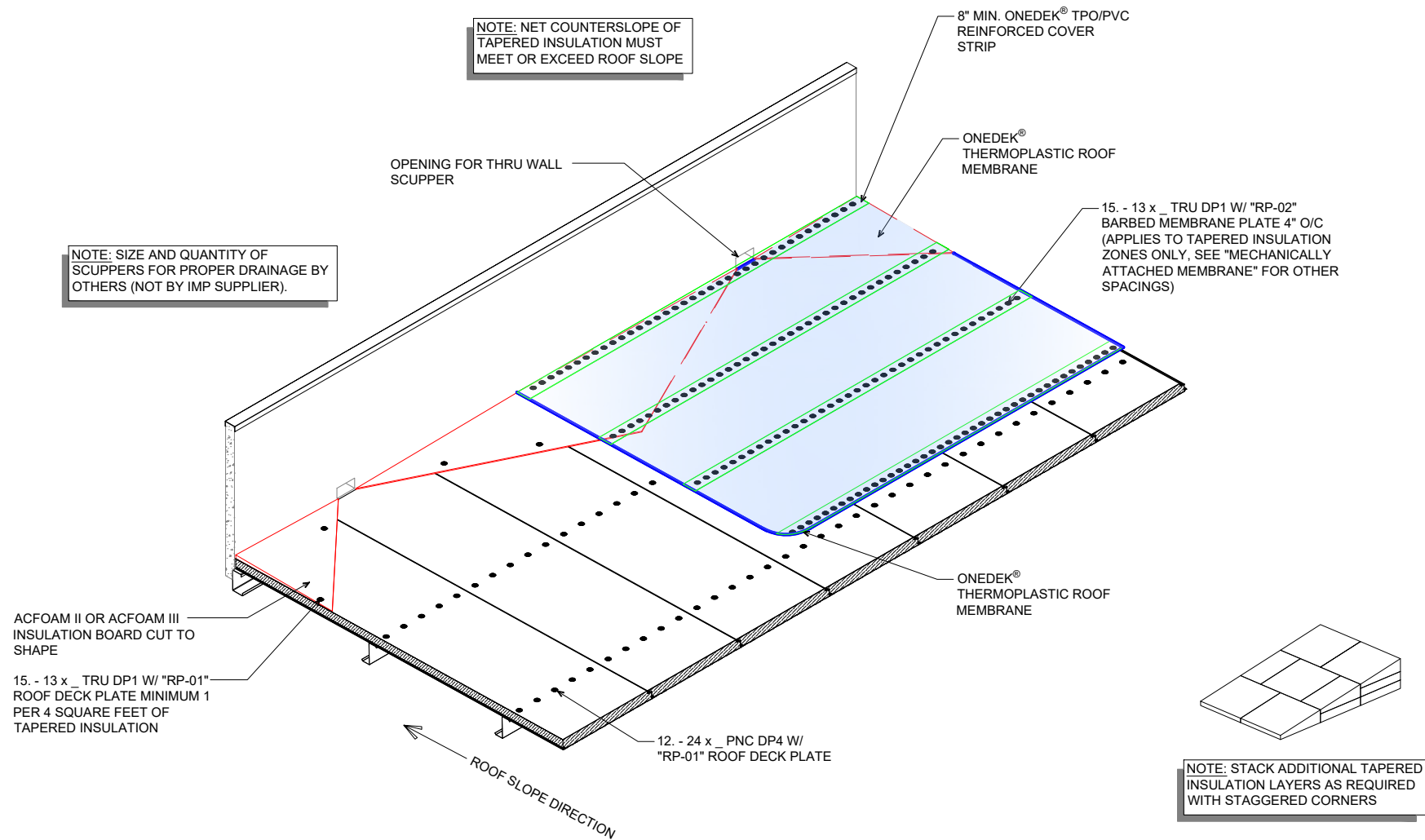
DATE:	11/28/23	SHEET:	1 OF 1
APPLICATION:	ONEDEK® MECHANICALLY ATTACHED, COMMERCIAL & INDUSTRIAL, COLD-STORAGE	DRAWN BY:	LDS
AWIP DETAIL NUMBER:	RDR-CICS-DA-001		

929 ALDRIDGE ROAD
VACAVILLE, CA 95688
TEL: (707) 359-2280
FAX: (707) 359-2286
WWW.AWIPANELS.COM



NOTE: SIZE AND QUANTITY OF SCUPPERS FOR PROPER DRAINAGE BY OTHERS (NOT BY IMP SUPPLIER).

NOTE: NET COUNTERSLOPE OF TAPERED INSULATION MUST MEET OR EXCEED ROOF SLOPE



NOTE: STACK ADDITIONAL TAPERED INSULATION LAYERS AS REQUIRED WITH STAGGERED CORNERS

ONEDEK® TAPERED INSULATION AND SCUPPER
INSTALLATION ALONG PARAPET (MECHANICALLY ATTACHED)
(ISOMETRIC VIEW)

NOTE:

USE LA505 ADHESIVE FOR TPO MEMBRANES. THE LA505 ADHESIVE MUST BE APPLIED AT THE RATE OF APPROXIMATELY 200 SQUARE FEET PER GALLON PER SURFACE, SUFFICIENT TO BOND 100 SQUARE FEET OF MEMBRANE IN PLACE. A 5 GALLON PAIL OF LA505 COVERS APPROXIMATELY 500 SF OF BONDED MATERIAL.

NOTE:

USE LA432M ADHESIVE FOR PVC MEMBRANES. THE LA432M ADHESIVE MUST BE APPLIED AT THE RATE OF APPROXIMATELY 120 SQUARE FEET PER GALLON PER SURFACE, SUFFICIENT TO BOND 60 SQUARE FEET OF MEMBRANE IN PLACE. A 5 GALLON PAIL OF LA432M COVERS APPROXIMATELY 300 SF OF BONDED MATERIAL.

OPENING FOR THRU WALL
SCUPPER

NOTE: SIZE AND QUANTITY OF
SCUPPERS FOR PROPER DRAINAGE BY
OTHERS (NOT BY IMP SUPPLIER).

ONEDEK®
THERMOPLASTIC ROOF
MEMBRANE

MEMBRANE ROOFING
ADHESIVE

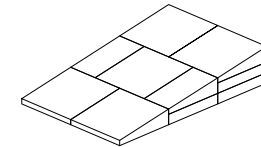
4" MAX ADHESIVE
EDGE
DISTANCE

ATLAS TAPERED INSULATION
BOARD CUT TO SHAPE AND
APPLIED WITH FOAM ROOFING
ADHESIVE RIBBONS 12" MAX
O.C.

ROOF SLOPE DIRECTION

NOTE: NET COUNTERSLOPE OF
TAPERED INSULATION MUST
MEET OR EXCEED ROOF SLOPE

NOTE: STACK ADDITIONAL TAPERED
INSULATION LAYERS AS REQUIRED
WITH STAGGERED CORNERS



ONEDEK® TAPERED INSULATION AND SCUPPER INSTALLATION ALONG PARAPET (FULLY ADHERED) (ISOMETRIC VIEW)

DETAIL:

ONEDEK® TAPERED INSULATION AND SCUPPER INSTALLATION

APPLICATION:

ONEDEK® FULLY ADHERED, COMMERCIAL & INDUSTRIAL, COLD-STORAGE

AWIP DETAIL NUMBER:

RDR-C/ICS-DA-002

DATE:

11/28/23

DRAWN BY:

LDS

SHEET:

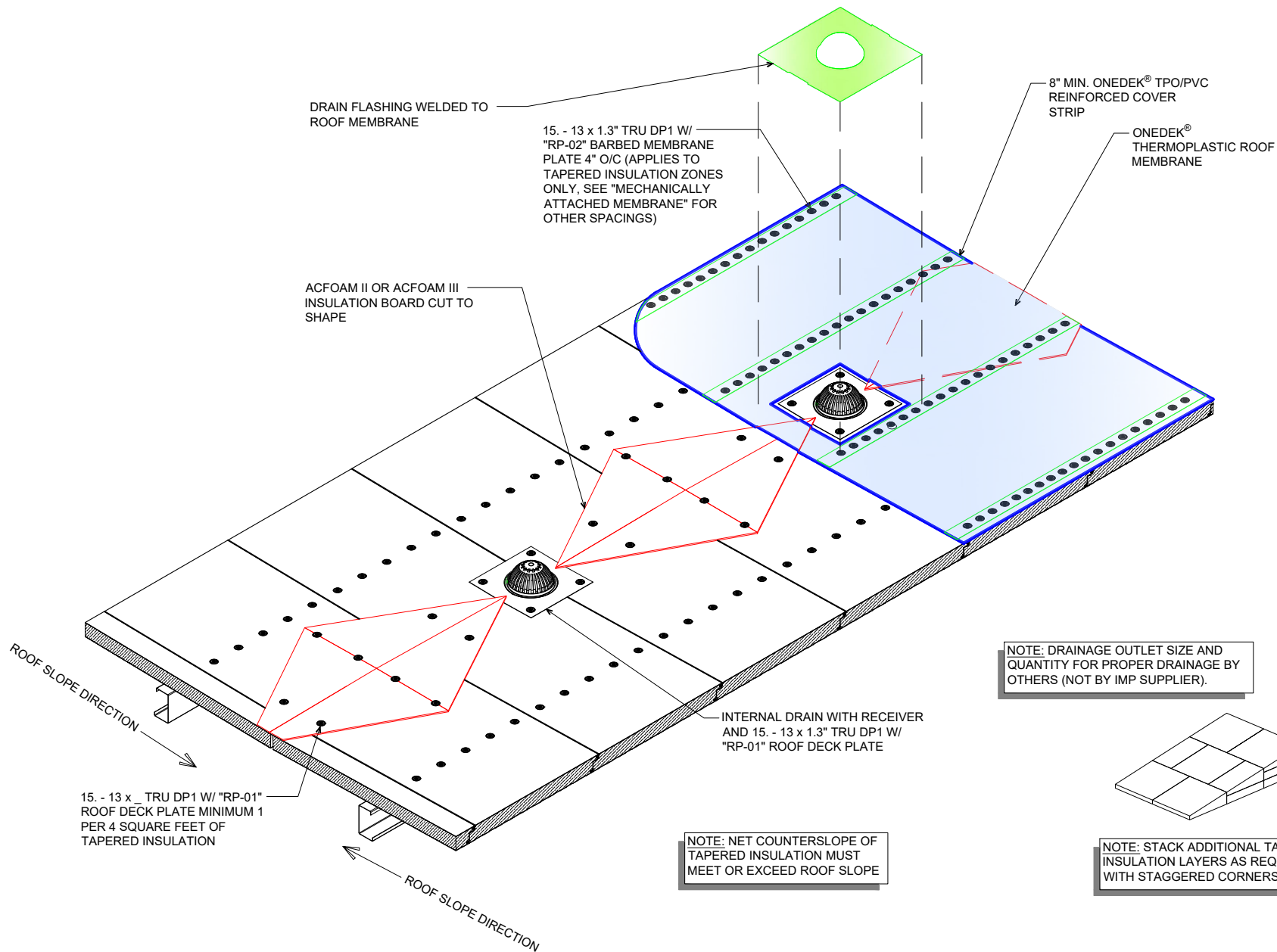
1

OF 1

929 ALDRIDGE ROAD
VACAVILLE, CA 95688
TEL: (707) 359-2280
FAX: (707) 359-2286
WWW.AWIPANELS.COM

All Weather
Insulated Panels





NOTE: DRAINAGE OUTLET SIZE AND QUANTITY FOR PROPER DRAINAGE BY OTHERS (NOT BY IMP SUPPLIER).

NOTE: NET COUNTERSLOPE OF TAPERED INSULATION MUST MEET OR EXCEED ROOF SLOPE

NOTE: STACK ADDITIONAL TAPERED INSULATION LAYERS AS REQUIRED WITH STAGGERED CORNERS

ONEDEK® TAPERED INSULATION AND INTERNAL DRAIN INSTALLATION (MECHANICALLY ATTACHED) (ISOMETRIC VIEW)

DETAIL:

ONEDEK® TAPERED INSULATION AND INTERNAL DRAIN INSTALLATION

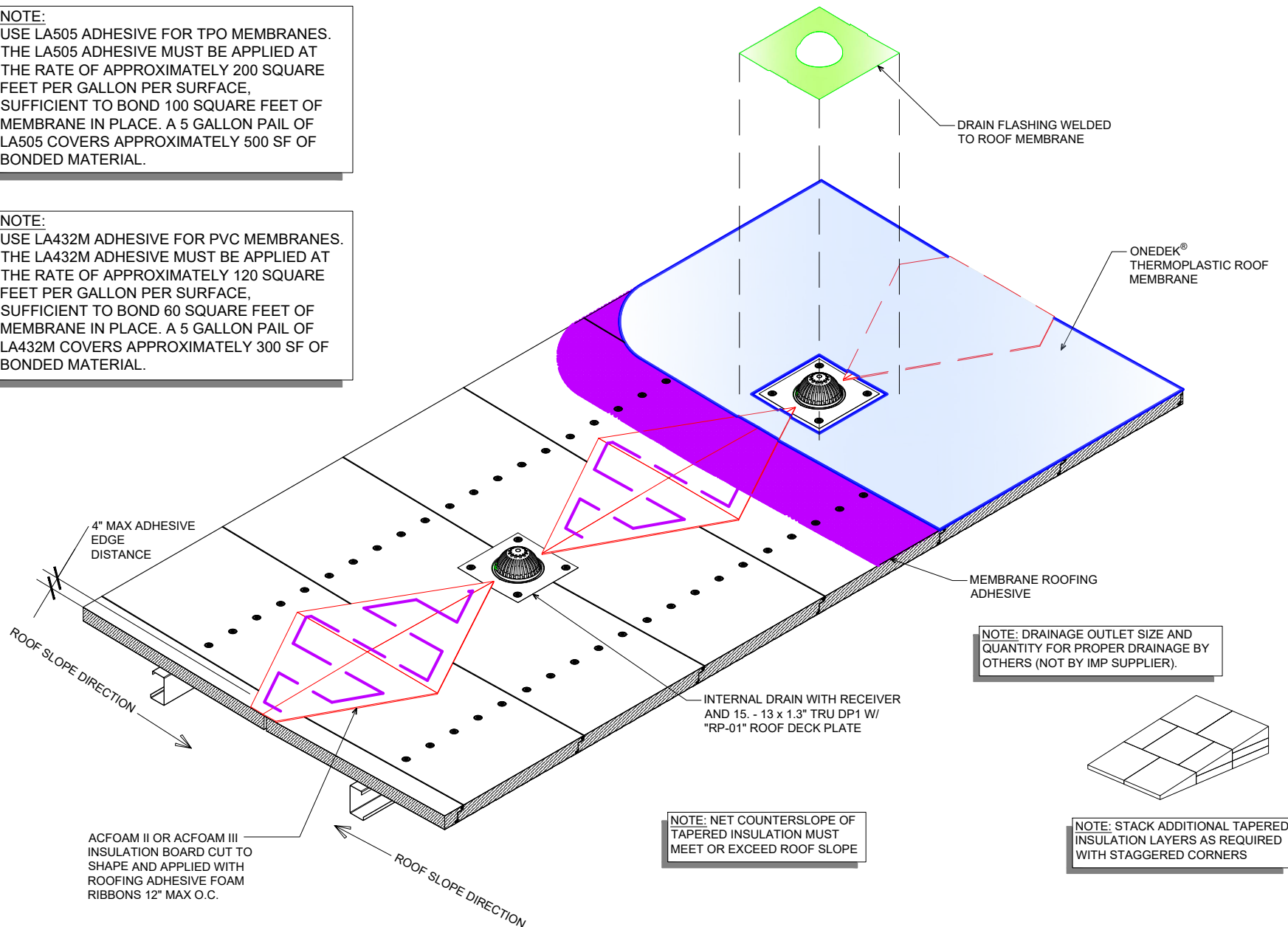
DATE:	11/28/23	SHEET:	1 OF 1
APPLICATION:	ONEDEK® MECHANICALLY ATTACHED, COMMERCIAL & INDUSTRIAL, COLD-STORAGE	DRAWN BY:	LDS
AWIP DETAIL NUMBER:	RDR-CICS-DA-003		

929 ALDRIDGE ROAD
VACAVILLE, CA 95688
TEL: (707) 359-2280
FAX: (707) 359-2286
WWW.AWIPANELS.COM



NOTE:
USE LA505 ADHESIVE FOR TPO MEMBRANES.
THE LA505 ADHESIVE MUST BE APPLIED AT
THE RATE OF APPROXIMATELY 200 SQUARE
FEET PER GALLON PER SURFACE,
SUFFICIENT TO BOND 100 SQUARE FEET OF
MEMBRANE IN PLACE. A 5 GALLON PAIL OF
LA505 COVERS APPROXIMATELY 500 SF OF
BONDED MATERIAL.

NOTE:
USE LA432M ADHESIVE FOR PVC MEMBRANES.
THE LA432M ADHESIVE MUST BE APPLIED AT
THE RATE OF APPROXIMATELY 120 SQUARE
FEET PER GALLON PER SURFACE,
SUFFICIENT TO BOND 60 SQUARE FEET OF
MEMBRANE IN PLACE. A 5 GALLON PAIL OF
LA432M COVERS APPROXIMATELY 300 SF OF
BONDED MATERIAL.



NOTE: DRAINAGE OUTLET SIZE AND
QUANTITY FOR PROPER DRAINAGE BY
OTHERS (NOT BY IMP SUPPLIER).

NOTE: NET COUNTERSLOPE OF
TAPERED INSULATION MUST
MEET OR EXCEED ROOF SLOPE

NOTE: STACK ADDITIONAL
INSULATION LAYERS AS REQUIRED
WITH STAGGERED CORNERS

ONEDEK® TAPERED INSULATION AND INTERNAL DRAIN
INSTALLATION (FULLY ADHERED)
(ISOMETRIC VIEW)

DETAIL: ONEDEK® TAPERED INSULATION AND INTERNAL DRAIN INSTALLATION		DATE: 11/28/23	SHEET: 1 OF 1
		DRAWN BY: LDS	
APPLICATION: ONEDEK® FULLY ADHERED, COMMERCIAL & INDUSTRIAL, COLD-STORAGE AWIP DETAIL NUMBER: RDR-CICS-DA-004			
929 ALDRIDGE ROAD VACAVILLE, CA 95688 TEL: (707) 359-2280 FAX: (707) 359-2286 WWW.AWIPANELS.COM			

"BC-02" 20 GA CHANNEL CAP W/
14. - 13 x 1.5" TRU DP1 12" O/C. W/
BUTYL SEALANT AT FLANGES (MARRY
TO VERTICAL SEALANT)

#14 x 1 1/2" UNIVERSAL
FASTENERS

8" WIDE CONCEALED SPLICE
PLATE, WITH DUAL NON-CURING
SEALANT STRIPS, AT EACH JOINT
GC-64 COPING COVER (12'-0"
LENGTHS)

ONEDEK® SCUPPER

ADHERED ONEDEK® FLASHING

15. - 13 x _" TRU DP1 W/ "RP-02"
BARBED MEMBRANE PLATE 4" O/C
(APPLIES TO TAPERED INSULATION
ZONES ONLY, SEE "MECHANICALLY
ATTACHED MEMBRANE" FOR OTHER
SPACINGS)

12" WIDE 16 GA. GALVANIZED
ANCHOR CLIPS 3'-0" O/C

14. - 13 x 1.5" TRU DP1 AT
CORNERS AND 6" MAX O.C.
MIN 3" CLEARANCE
INTERIOR FOR FLASHING
WELD

15. - 13 x _ TRU DP1 W/
"RP-01" ROOF DECK
PLATE MINIMUM 1 PER
4 SQUARE FEET OF
TAPERED INSULATION

ACFOAM II OR
ACFOAM III
TAPERED
INSULATION

ONEDEK® THERMOPLASTIC ROOF
MEMBRANE (SEE "ONEDEK®
ROOFING MEMBRANE" FOR
ATTACHMENT OPTIONS)

#E PARAPET W/ EDGE METAL AND SCUPPER (EAVE) (SECTION VIEW)

DETAIL:

PARAPET WITH EDGE METAL AND SCUPPER (EAVE)

APPLICATION:
ONEDEK® MECHANICALLY ATTACHED, COMMERCIAL & INDUSTRIAL, COLD-STORAGE

DATE:
11/27/23

SHEET:

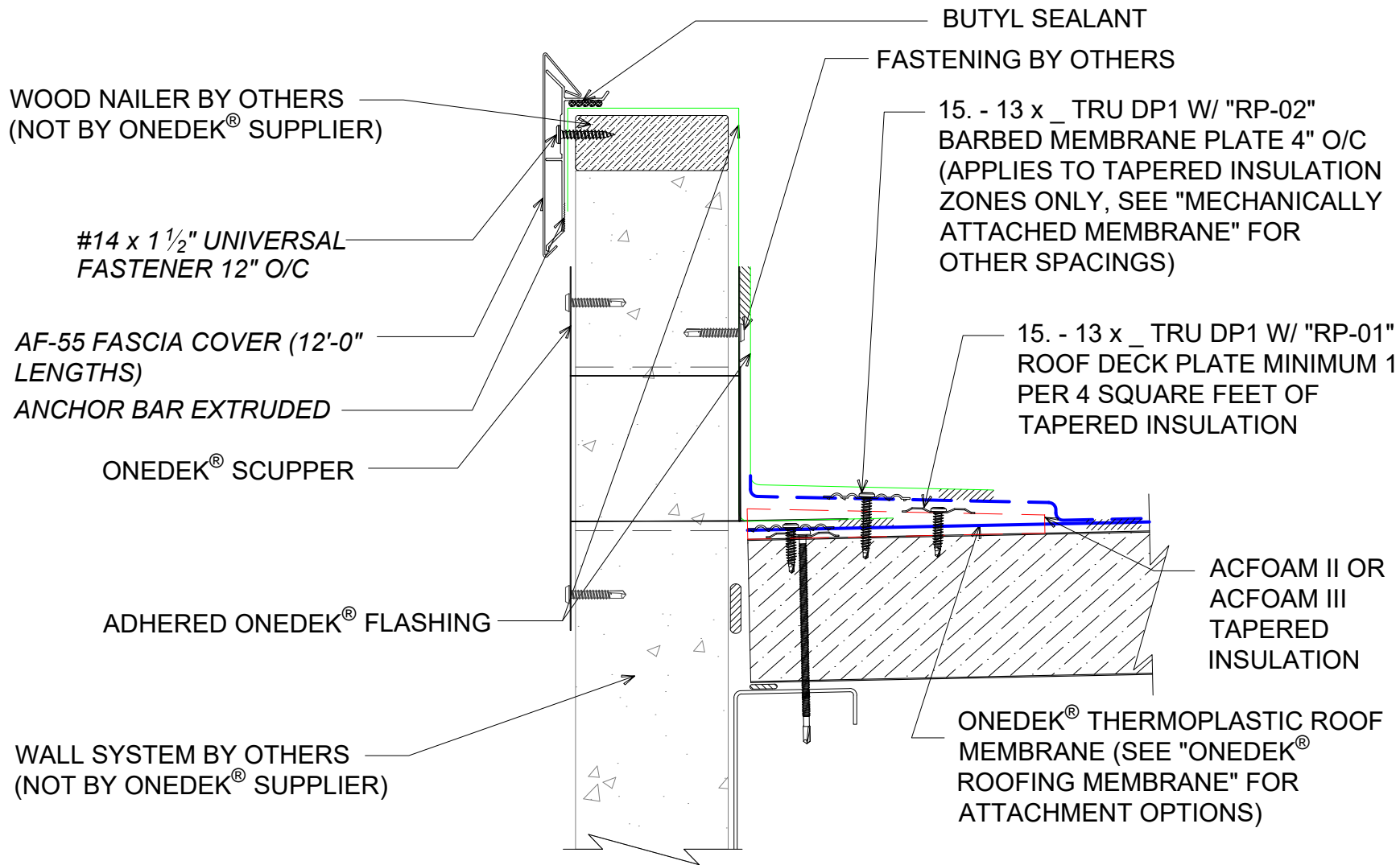
AWIP DETAIL NUMBER:
RDR-CICS-DA-005

DRAWN BY:
LDS

1
OF 1

929 ALDRIDGE ROAD
VACAVILLE, CA 95688
TEL: (707) 359-2280
FAX: (707) 359-2286
WWW.AWIPANELS.COM





#E PARAPET W/ EDGE METAL AND SCUPPER (EAVE)

(SECTION VIEW)

DETAIL:

PARAPET WITH EDGE METAL AND SCUPPER (EAVE)

929 ALDRIDGE ROAD
VACAVILLE, CA 95688
TEL: (707) 359-2280
FAX: (707) 359-2286
WWW.AWIPANELS.COM

All Weather
Insulated Panels



APPLICATION:
ONEDEK® MECHANICALLY ATTACHED, COMMERCIAL & INDUSTRIAL, COLD-STORAGE
AWIP DETAIL NUMBER:
RDR-CICS-DA-006

DATE:
11/27/23

DRAWN BY:
LDS

SHEET:
1 OF 1

"BC-02" 20 GA CHANNEL CAP W/
14. - 13 x 1.5" TRU DP1 12" O/C. W/
BUTYL SEALANT AT FLANGES (MARRY
TO VERTICAL SEALANT)

#14 x 1 1/2" UNIVERSAL
FASTENER 12" O/C

8" WIDE CONCEALED SPLICE
PLATE, WITH DUAL NON-CURING
SEALANT STRIPS, AT EACH JOINT
GC-64 COPING COVER (12'-0"
LENGTHS)

ONEDEK® SCUPPER

ADHERED ONEDEK® FLASHING

12" WIDE 16 GA. GALVANIZED
ANCHOR CLIPS 3'-0" O/C

14. - 13 x 1.5" TRU DP1 AT
CORNERS AND 6" MAX O.C.
MIN 3" CLEARANCE
INTERIOR FOR FLASHING
WELD

ACFOAM II OR
ACFOAM III
TAPERED
INSULATION

ONEDEK® THERMOPLASTIC ROOF
MEMBRANE (SEE "ONEDEK®
ROOFING MEMBRANE" FOR
ATTACHMENT OPTIONS)

#E PARAPET W/ EDGE METAL AND SCUPPER (EAVE) (SECTION VIEW)

DETAIL:

PARAPET WITH EDGE METAL AND SCUPPER (EAVE)

APPLICATION:
ONEDEK® FULLY ADHERED, COMMERCIAL & INDUSTRIAL, COLD-STORAGE
AWIP DETAIL NUMBER:
RDR-CICS-DA-007

DATE:
11/27/23

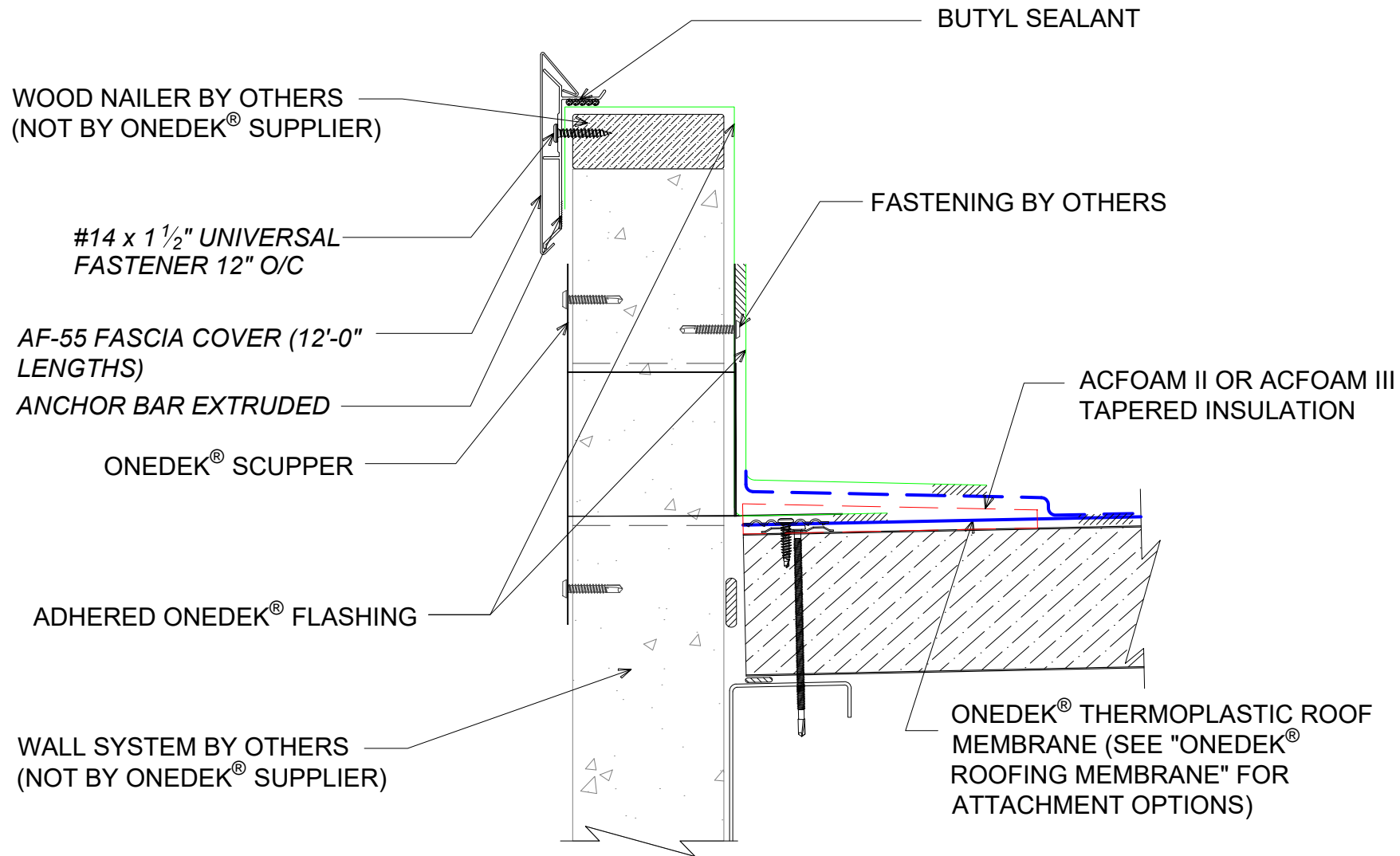
DRAWN BY:
LDS

SHEET:
1 OF 1

929 ALDRIDGE ROAD
VACAVILLE, CA 95688
TEL: (707) 359-2280
FAX: (707) 359-2286
WWW.AWIPANELS.COM

All Weather
Insulated Panels





#E PARAPET W/ EDGE METAL AND SCUPPER (EAVE)

(SECTION VIEW)

DETAIL:

PARAPET WITH EDGE METAL AND SCUPPER (EAVE)

929 ALDRIDGE ROAD
VACAVILLE, CA 95688
TEL: (707) 359-2280
FAX: (707) 359-2286
WWW.AWIPANELS.COM

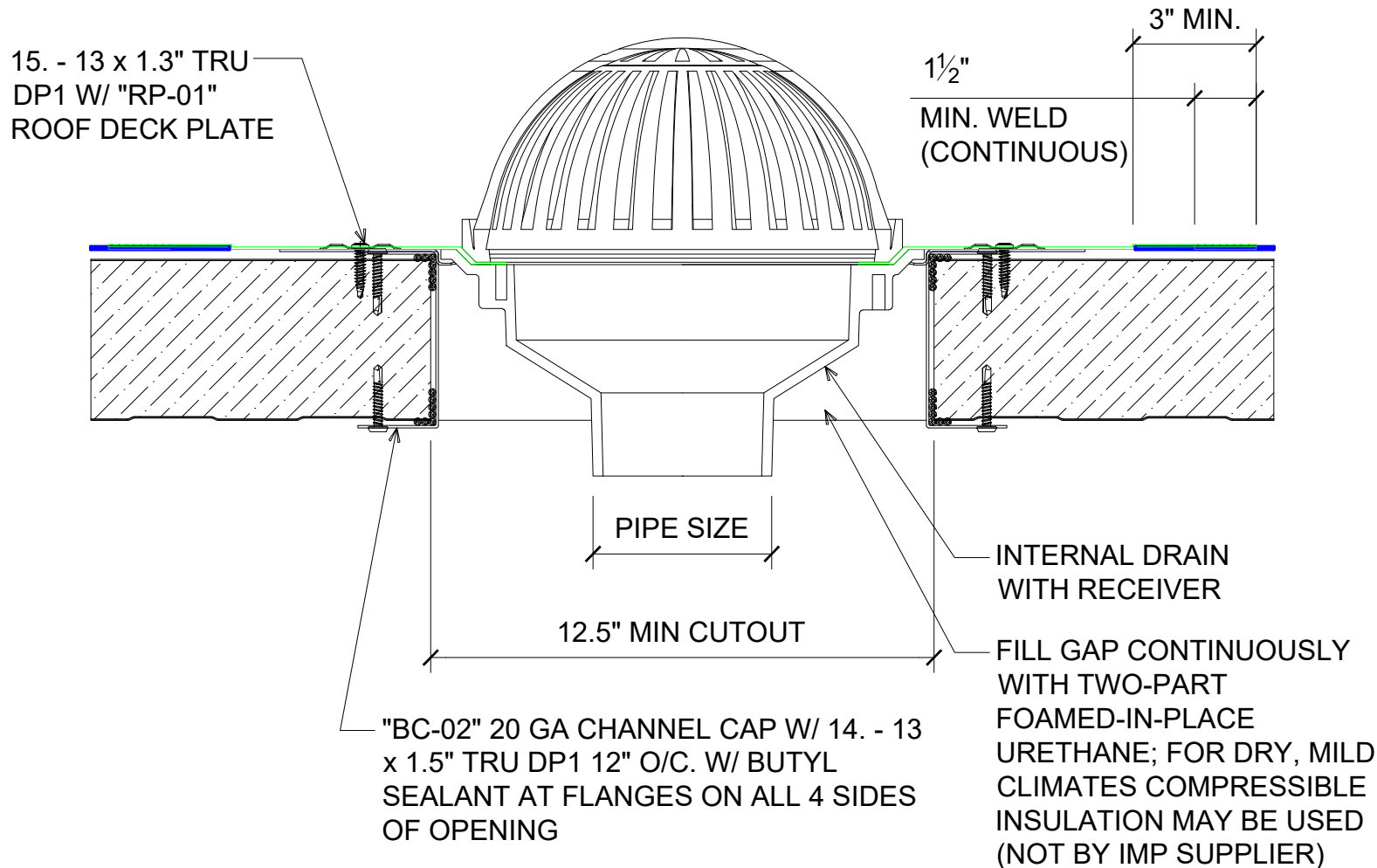
All Weather
Insulated Panels



APPLICATION:
ONEDEK® FULLY ADHERED, COMMERCIAL & INDUSTRIAL, COLD-STORAGE
AWIP DETAIL NUMBER:
RDR-CICS-DA-008

DATE:
11/27/23
DRAWN BY:
LDS

SHEET:
1
OF
1



INTERNAL DRAIN INSTALLATION (NO TAPERED INSULATION)

(SECTION VIEW)

DETAIL:

INTERNAL DRAIN INSTALLATION W/O TAPERED INSULATION

929 ALDRIDGE ROAD
VACAVILLE, CA 95688
TEL: (707) 359-2280
FAX: (707) 359-2286
WWW.AWIPANELS.COM

All Weather
Insulated Panels



APPLICATION:
ONEDEK®, COMMERCIAL & INDUSTRIAL, COLD-STORAGE
AWIP DETAIL NUMBER:

DATE:
11/27/23

DRAWN BY:
LDS

SHEET:

1 OF 1