

NOTE: FIELD-CUT
LONGITUDINAL CEILING
PANELS AS NECESSARY.

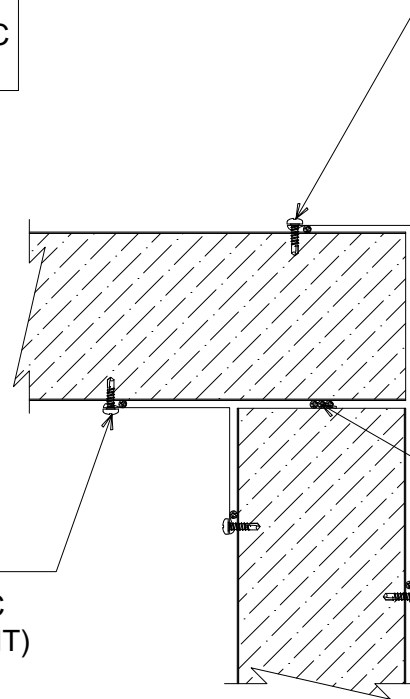
NOTE: CONSULT YOUR AWIP
REPRESENTATIVE FOR SPECIFIC
SUPPORT REQUIREMENTS.

"OC-08" OUTSIDE CORNER W/
10. x 0.75" PPH DP3 8" O/C
(SET TRIM IN BUTYL SEALANT)

"IC-08" INSIDE CORNER
W/ 10. x 0.75" PPH DP3 8" O/C
(SET TRIM IN BUTYL SEALANT)

BUTYL SEALANT
(MARRY TO VERTICAL SEALANT)

NOTE: REFER TO PANEL JOINT
DETAIL(S) FOR VERTICAL
SEALANT LOCATION(S).



PARTITION TO CEILING

(SECTION VIEW)

DETAIL:

PARTITION TO CEILING

APPLICATION:

PARTITION WALL, CEILING, AMBIENT, COOLER

AWIP DETAIL NUMBER:

APC-AIIC-CT-003

SHEET:

1

OF 1

DATE:

09/30/25

DRAWN BY:

MMF

929 ALDRIDGE ROAD
VACAVILLE, CA 95688
TEL: (707) 359-2280
FAX: (707) 359-2286
WWW.AWIPANELS.COM

All Weather
Insulated Panels

