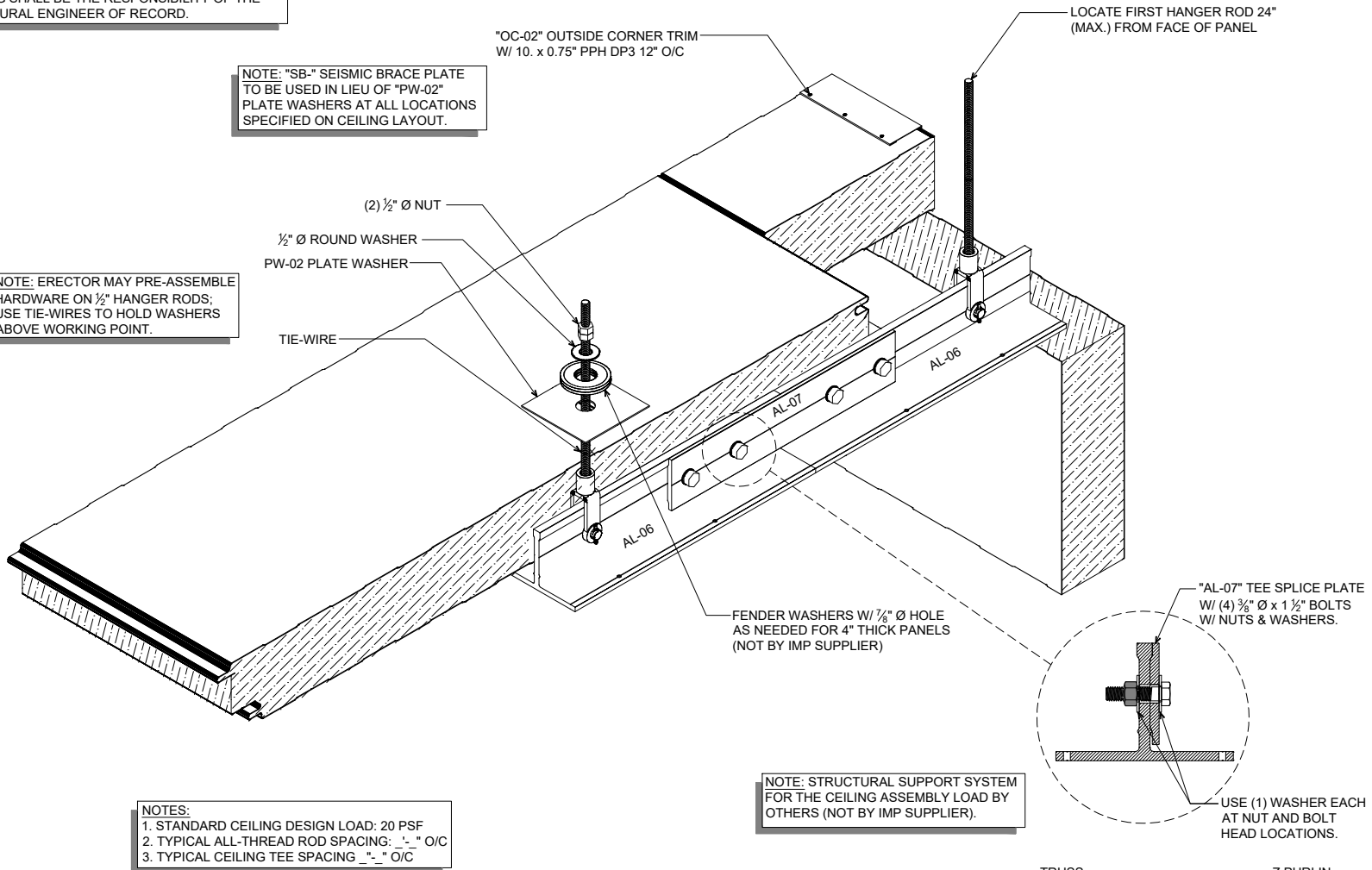


NOTE: AWIP WILL PROVIDE PW- AND SB- PLATES AS SHOWN IN THE DRAWINGS. THE PW- AND SB- LAYOUT IS A GRAPHICAL REPRESENTATION ONLY. FINAL LAYOUT / DESIGN OF CEILING AND PARTITION BRACING SHALL BE THE RESPONSIBILITY OF THE STRUCTURAL ENGINEER OF RECORD.

NOTE: "SB-" SEISMIC BRACE PLATE TO BE USED IN LIEU OF "PW-02" PLATE WASHERS AT ALL LOCATIONS SPECIFIED ON CEILING LAYOUT.

NOTE: ERECTOR MAY PRE-ASSEMBLE HARDWARE ON 1/2" HANGER RODS; USE TIE-WIRES TO HOLD WASHERS ABOVE WORKING POINT.

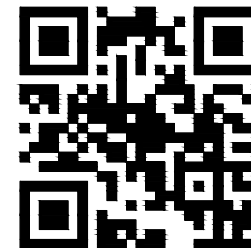
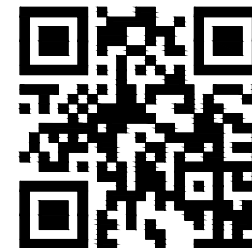


NOTES:
 1. STANDARD CEILING DESIGN LOAD: 20 PSF
 2. TYPICAL ALL-THREAD ROD SPACING: "-_" O/C
 3. TYPICAL CEILING TEE SPACING "-_" O/C

NOTE: STRUCTURAL SUPPORT SYSTEM FOR THE CEILING ASSEMBLY LOAD BY OTHERS (NOT BY IMP SUPPLIER).

TRUSS.
CLICK HERE

Z PURLIN.
CLICK HERE



AL-06 ALUMINUM CEILING TEE SYSTEM

(ISOMETRIC VIEW)

DETAIL:

ISOMETRIC - AL-06 TEE W/ CLEVIS

929 ALDRIDGE ROAD
 VACAVILLE, CA 95688
 TEL: (707) 359-2280
 FAX: (707) 359-2286
 WWW.AWIPANELS.COM

All Weather
 Insulated Panels



APPLICATION:
 CEILING, AMBIENT, COOLER
 AWIP DETAIL NUMBER:
 APC-AIIC-ISO-005

DATE:
11/18/24

DRAWN BY:
MMF/DJM

SHEET:
1 OF 1